



Create UML model for the new Functional Profile

For the Profile Definition you need to create a UML model in where is shown how the Profile Definition, the Base Model and the actual new Functional Profile relates to each other. This needs to be done so everything you define form the Base Model is included in the Profile Definition. And of course everything that is defined in the Profile Definition is included in the actual new Functional Profile.

The creation of the UML model can be done after you:

- Created a new project in Enterprise Architect, EA, see chapter 'Creation' the user guide '1CreateNewProfile.pdf'.
- Loaded the Base Model, see in Learning Center, see chapter 'Creation' the user guide '2LoadBaseModel.pdf'.
- Created a package for the new Functional Profile, see chapter 'Creation' the user guide '3CreatePackageforFP.pdf'.

NOTE: be sure that you have installed the latest version of the extension before you are going to develop a new functional profile! Contact the EHR WG co-chairs to obtain the extension. Name of the extension is 'HL7_FM_EA_Extension jjjmmdd'. Check on a regularly base if a new version is available!

Follow the next steps:

- Open the package with the Profile Definition. You will see the diagram you added to this package. See figure 1.
- Double click on the diagram 'Profile Definition'. An empty diagram field will open.

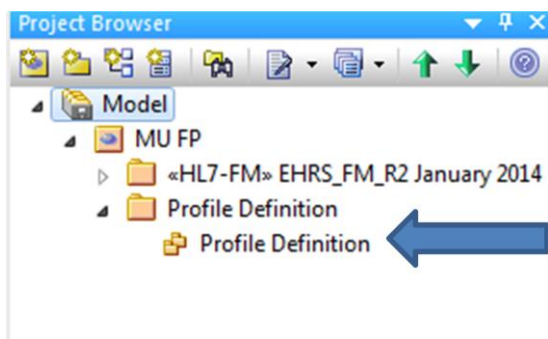


Figure 1. Diagram in Profile Definition.

- Drag the three packages to this diagram field. The three packages are: Profile Definition, the Base Model and the Profile. See figure 2.

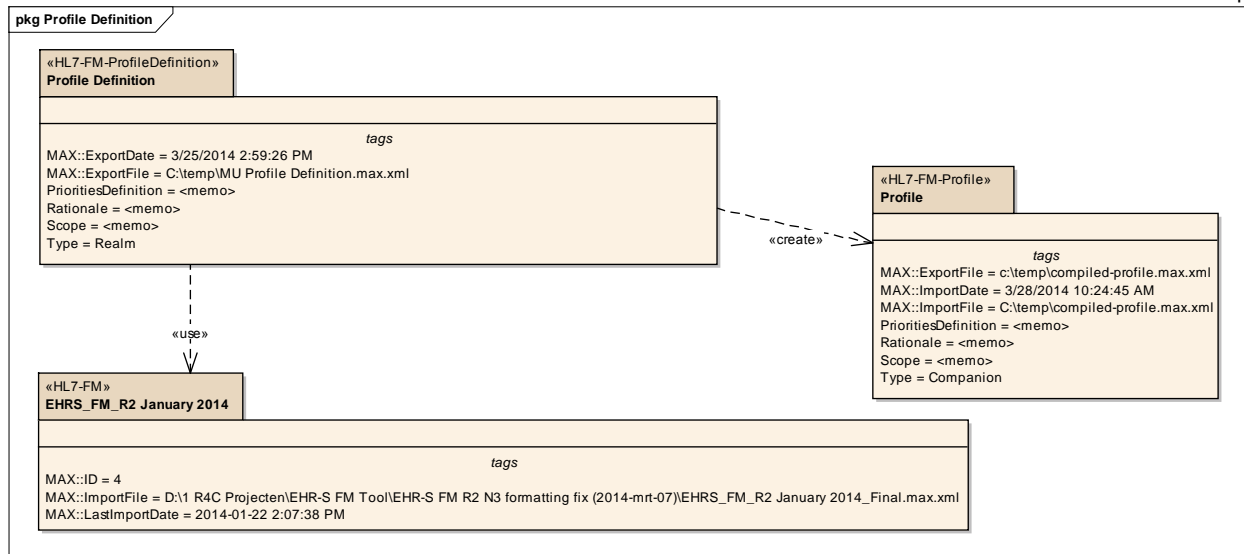


Figure 2. The UML Model for Profile Definition.

To connect the three packages and show their dependencies:

- Drag a connector from Profile Definition to Profile, select Dependency, and stereotype 'create'.
- Drag a connector from Profile Definition to Base Model, select Dependency, and stereotype 'use'.
- Enter stereotype: double click on the connector for the properties of the connector. The connector from Profile Definition to Profile shall get the stereotype 'create'. See figure 3.
- The connector from the Profile Definition to the Base Model shall get the stereotype 'use'.

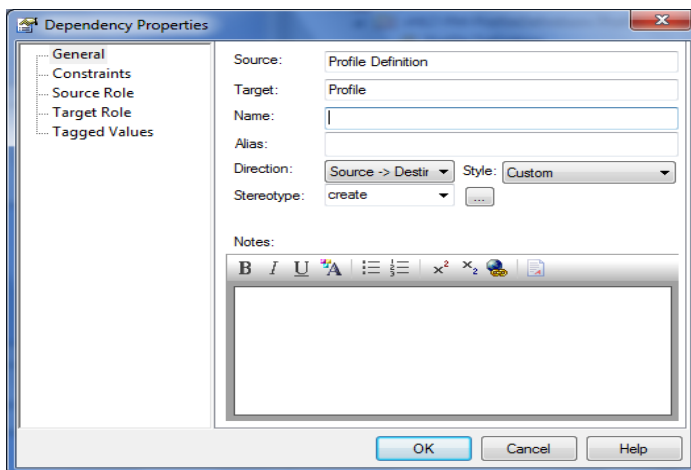


Figure 3. Dependency Properties.

To include the Tagged Values in the packages (if you did not do this already):



- Select a package in the diagram. Now you will see the Tagged Values for that package. You find the Tagged Values next to the properties underneath the Project Browser.

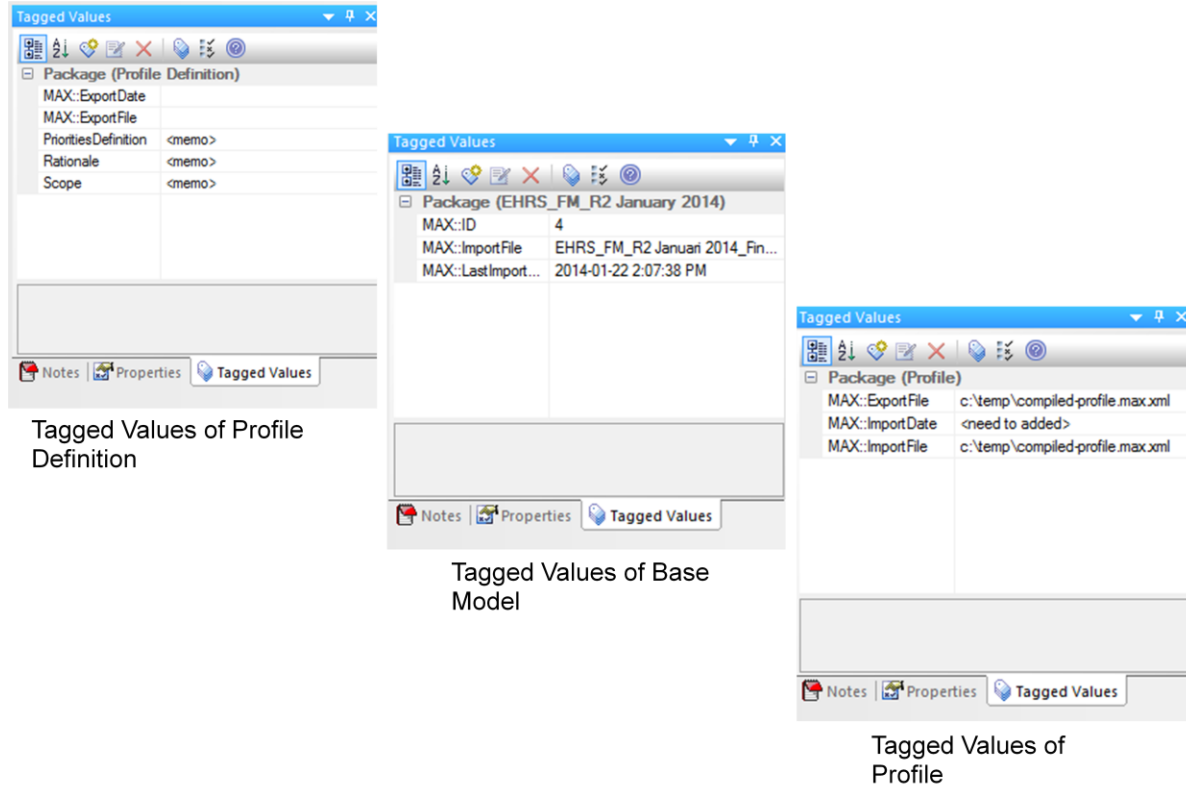


Figure 4. Tagged Values of a package.

The Tagged Values for the three packages shall be as follows:

1. Profile Definition;
 - a. MAX::ExportDate: the date the file was created. If you define the profile from the Base Model, this date will be included. Example: May/08/2014.
 - b. MAX::ExportFile: the name of the MAX file that is exported and the File Path where it is saved on your computer. Example: C:\temp\MU Profile Definition.max.xml
2. The Base Model;
 - a. MAX::ID: this will be added automatically.
 - b. MAX::ImportFile: the name of the MAX file that is used for the import of the Base Model and the File Path where it is saved on your computer. Example: D:\1 R4C Projecten\EHR-S FM Tool\EHR-S FM R2 N3 formatting fix (2014-mrt-07)\EHR_S_FM_R2 January 2014_Final.max.xml
 - c. MAX::LastImportDate: the date the base model was imported in the tool.
3. Profile;



- a. MAX::ExportFile: the name of the MAX export file and the File Path where this is saved on your computer. Example: C:\temp\MU compiled-profile.max.xml.
- b. MAX::ImportDate: the date on which you imported the MAX import file.
- c. MAX::ImportFile: the name of the MAX import file and the File Path where this is saved on your computer.

You can add new Tagged Values as described earlier.

Be sure that the notation of the Tagged Value is conform the description above.

Now you are ready to create a Profile Definition. For the user guide on this topic see chapter 'Creation' the user guide '6CreateProfileDefinition.pdf'.