

Table of Contents

Model Detail	2
Use Case Model	2
Actors	2
Attester.....	3
Clinician.....	4
Patient.....	5
Recipient.....	5
Sender.....	6
Use Cases	6
Assess Pressure Ulcer Risk	7
Attester	9
Attest Assessment	9
Complete?	10
Assessment Complete	10
Trigger	11
Clinician.....	11
Make Observation.....	12
Record Observation.....	12
Review Relevant Chart Information	13
Chart information needed?	14
Create Care Plan	15
Plan Intervention	15
Produce Summary Documentation	16
Receive Summary Documentation.....	16
Update Care Plan.....	17
Modify Intervention	18
Plan intervention.....	19
Record intervention results.....	20
Plan complete?.....	20
ActivityInitial.....	21
Change needed.....	21
Intervention Modified	22
Intervention Needed	22
Intervention Planned.....	23
Update Intervention.....	23
Update Pressure Ulcer Risk Assessment.....	24
Pressure Ulcer Risk Assessment	24

Model Documentation

Model Detail

This document provides a complete overview of all element details. For simpler and more focused reports, simply copy this initial template and turn off the sections not required.

Use Case Model

Type: **Package**
Status: Proposed. Version . Phase 1.0.
Package: Model
Detail: Created on 1/12/2011. Last modified on 1/12/2011
GUID: {5C2DA1B5-680A-4f82-A5D0-77E11C5ED57B}

Actors

Type: **Package**
Status: Proposed. Version 1.0. Phase 1.0.
Package: Use Case Model
Detail: Created on 11/19/2005. Last modified on 11/19/2005
GUID: {02AE30E5-C51C-40f3-B350-41BDC34BC9DD}

Actors - (Use Case diagram)

Created By: Jay Lyle on 11/19/2005
Last Modified: 1/31/2011
Version: 1.0. *Locked:* False
GUID: {449356FB-45CB-45e1-B92C-D5AA023D9995}

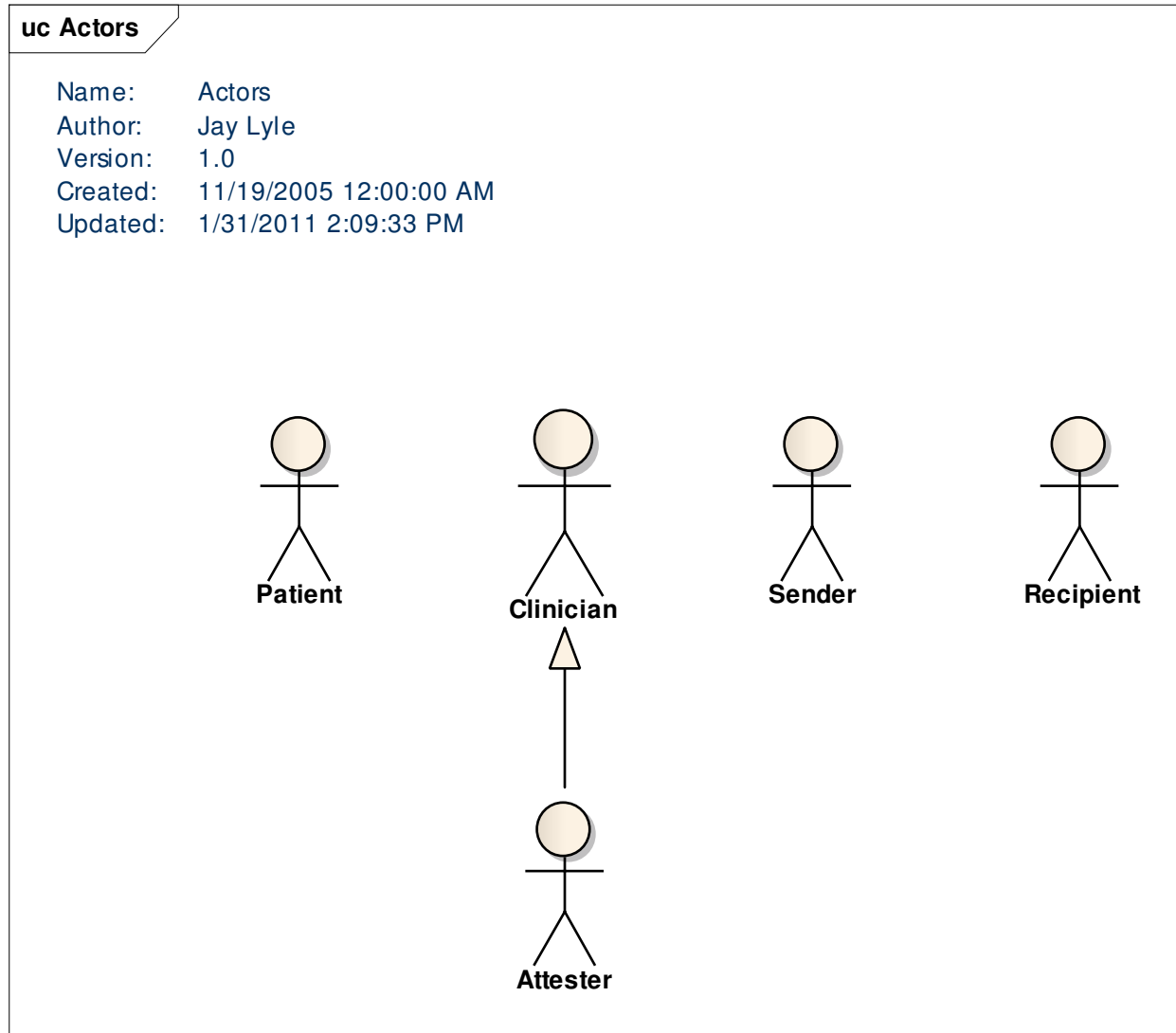


Figure: 1

Attester

Type: **Actor**
Status: Proposed. Version 1.0. Phase 1.0.
Package: Actors *Keywords:*
Detail: Created on 1/31/2011. Last modified on 1/31/2011.
GUID: {2D4E8A23-6138-440a-B721-327550343EF8}

A clinician with sufficient authority to attest that recorded information is correct

Connections

Connector	Source	Target	Notes
Generalization Source -> Destination	Public Attester	Public Clinician	

Connector	Source	Target	Notes
UseCaseLink Source -> Destination	Public Attester	Public Assess Pressure Ulcer Risk	

Clinician

Type: **Actor**
Status: Proposed. Version 1.0. Phase 1.0.
Package: Actors *Keywords:*
Detail: Created on 11/19/2005. Last modified on 1/31/2011.
GUID: {CB6D2A19-C8FA-403e-8531-F5EBA66F32BD}

A person who provides clinical care for the patient, and who may also record information in the course of care provision

Connections

Connector	Source	Target	Notes
UseCaseLink Source -> Destination	Public Clinician	Public Assess Pressure Ulcer Risk	
UseCaseLink Source -> Destination	Public Clinician	Public Update Pressure Ulcer Risk Assessment	
Generalization Source -> Destination	Public Attester	Public Clinician	
UseCaseLink Source -> Destination	Public Clinician	Public Create Care Plan	
UseCaseLink Source -> Destination	Public Clinician	Public Update Care Plan	

Patient

Type: **Actor**
Status: Proposed. Version 1.0. Phase 1.0.
Package: Actors *Keywords:*
Detail: Created on 1/12/2011. Last modified on 1/12/2011.
GUID: {9A9B5947-13DC-4be2-80FB-BA1C92518693}

The recipient of care and subject of the reporting activities

Connections

Connector	Source	Target	Notes
<u>UseCaseLink</u> Source -> Destination	Public Patient	Public Update Pressure Ulcer Risk Assessment	
<u>UseCaseLink</u> Source -> Destination	Public Patient	Public Assess Pressure Ulcer Risk	

Recipient

Type: **Actor**
Status: Proposed. Version 1.0. Phase 1.0.
Package: Actors *Keywords:*
Detail: Created on 1/12/2011. Last modified on 1/12/2011.
GUID: {5BC074AC-2BC4-4eb1-B3D1-E6B0C0759968}

A clinician or representative of a clinical service provider who needs information about the patient to support a transfer, consultation, or other activity

Connections

Connector	Source	Target	Notes
<u>UseCaseLink</u> Source -> Destination	Public Recipient	Public Receive Summary Documentation	

Sender

Type: **Actor**
Status: Proposed. Version 1.0. Phase 1.0.
Package: Actors *Keywords:*
Detail: Created on 1/13/2011. Last modified on 1/13/2011.
GUID: {349D5C97-B2E5-4f2f-AE4E-94694953BF06}

A person responsible for providing clinical information to partners (referred providers, payers, transfer providers, etc.)

Connections

Connector	Source	Target	Notes
<u>UseCaseLink</u> Source -> Destination	Public Sender	Public Produce Summary Documentation	

Use Cases

Type: Package
Status: Proposed. Version 1.0. Phase 1.0.
Package: Use Case Model
Detail: Created on 11/19/2005. Last modified on 1/12/2011
GUID: {9F812FDF-2D11-4e6c-BBCD-09BBEAE7F168}

Use Cases - (Use Case diagram)

Created By: Jay Lyle on 11/19/2005
Last Modified: 1/31/2011
Version: 1.0. **Locked:** False
GUID: {FD800E35-F6F5-4251-B767-017E6022634F}

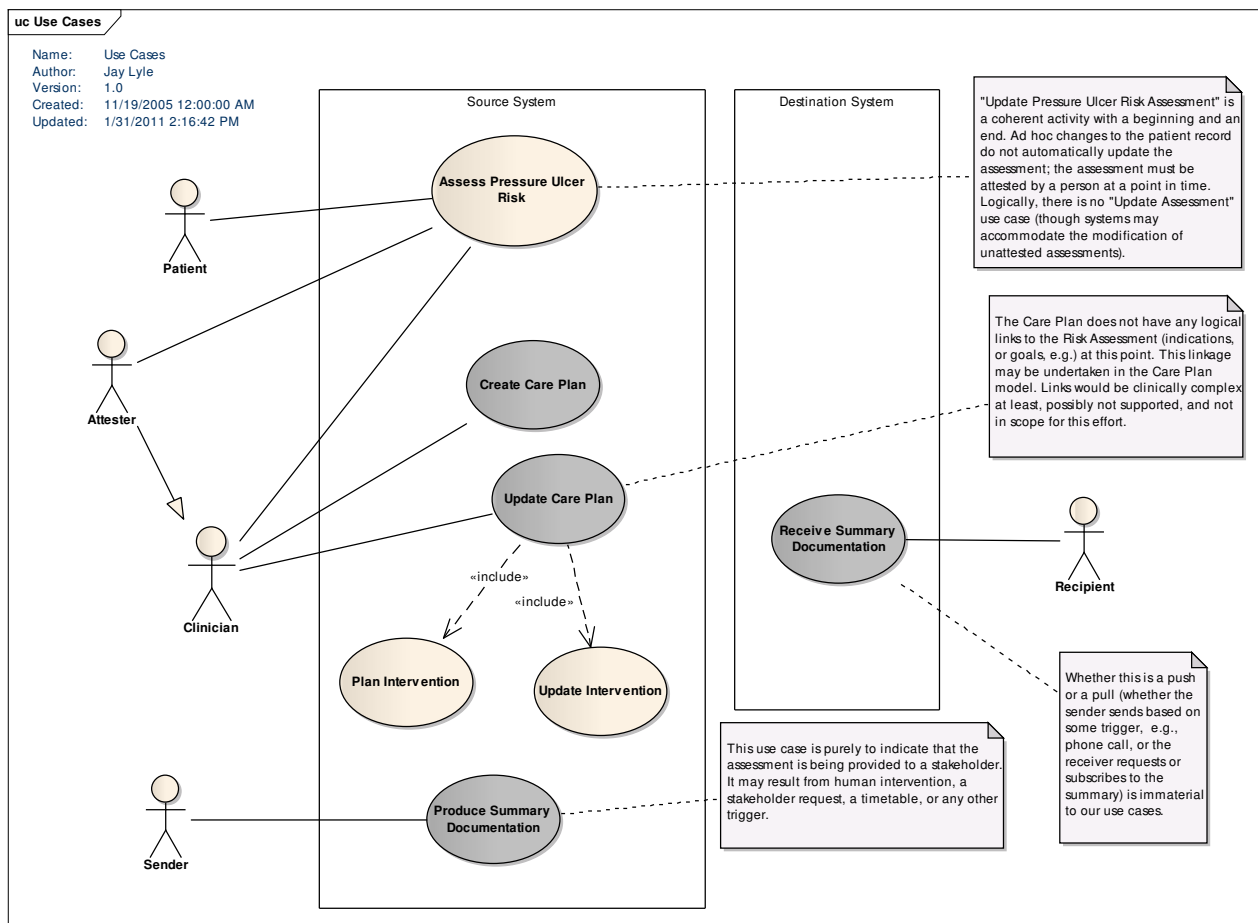


Figure: 2

Assess Pressure Ulcer Risk

Type: UseCase
Status: Proposed. Version 1.0. Phase 1.0.
Package: Use Cases **Keywords:**
Detail: Created on 11/19/2005. Last modified on 1/20/2011.

GUID: {226565A1-BFDA-4870-8A99-A50E44660C66}

A clinician examines a patient to assess pressure ulcer risk. The clinician records the findings. Some findings will be directly observed in the patient; others (medications, conditions) may be derived from the patient's record.

Connections

Connector	Source	Target	Notes
<u>UseCaseLink</u> Source -> Destination	Public Clinician	Public Assess Pressure Ulcer Risk	
<u>UseCaseLink</u> Source -> Destination	Public Patient	Public Assess Pressure Ulcer Risk	
<u>NoteLink</u> Source -> Destination	Public <anonymous>	Public Assess Pressure Ulcer Risk	
<u>UseCaseLink</u> Source -> Destination	Public Attester	Public Assess Pressure Ulcer Risk	

Activity diagram: Assess Pressure Ulcer Risk AD

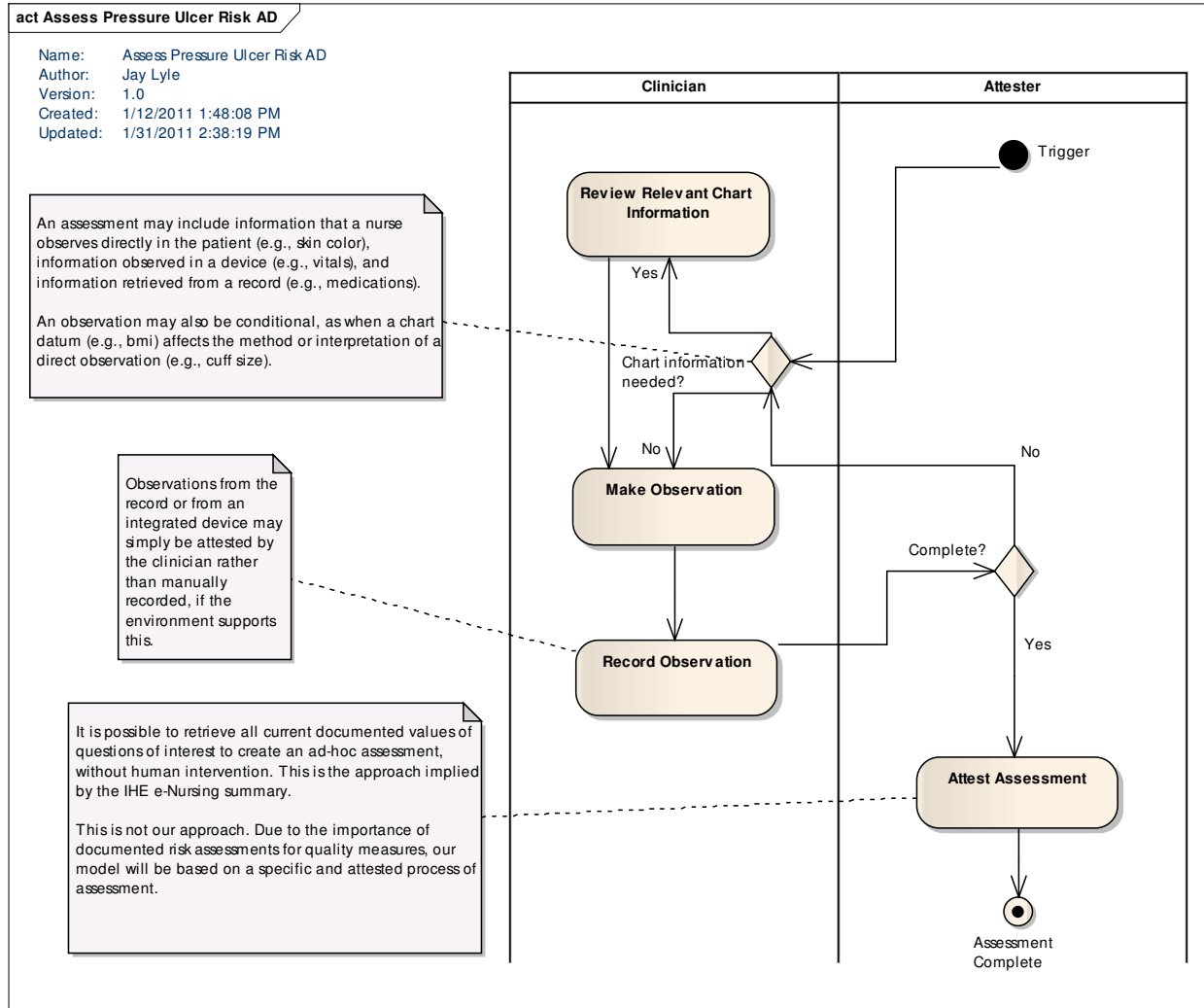


Figure: 3

Attester

Type: ActivityPartition
Status: Proposed. Version 1.0. Phase 1.0.
Package: Use Cases **Keywords:**
Detail: Created on 1/31/2011. Last modified on 1/31/2011.
GUID: {A41498EA-CAEE-44db-8C2D-CFC9718A0659}

Custom Properties

- isDimension = False
- isExternal = False

Attest Assessment

Type: **Activity**
 Status: Proposed. Version 1.0. Phase 1.0.
 Package: Use Cases *Keywords:*
 Detail: Created on 1/12/2011. Last modified on 1/31/2011.
 GUID: {5A00686A-3314-4f18-8FA4-96EB4BD96089}

A clinician attests that an assessment is complete and accurate

Custom Properties

- isReadOnly = False
- isSingleExecution = False
- postcondition =
- precondition =
- parameterName =

Connections

Connector	Source	Target	Notes
ControlFlow Source -> Destination	Public Attest Assessment	Public Assessment Complete	
ControlFlow Yes Source -> Destination	Public Complete?	Public Attest Assessment	
NoteLink Source -> Destination	Public <anonymous>	Public Attest Assessment	

Complete?

Type: **DecisionNode**
 Status: Proposed. Version 1.0. Phase 1.0.
 Package: Use Cases *Keywords:*
 Detail: Created on 1/12/2011. Last modified on 1/31/2011.
 GUID: {E2FFE72B-D0D2-42ae-A9A7-7B2736F3FB5B}

Connections

Connector	Source	Target	Notes
ControlFlow Yes Source -> Destination	Public Complete?	Public Attest Assessment	
ControlFlow No	Public	Public	

Connector	Source	Target	Notes
Source -> Destination	Complete?	Chart information needed?	
ControlFlow Source -> Destination	Public Record Observation	Public Complete?	

Assessment Complete

Type: **ActivityFinal**
Status: Proposed. Version 1.0. Phase 1.0.
Package: Use Cases *Keywords:*
Detail: Created on 1/12/2011. Last modified on 1/31/2011.
GUID: {B114A8BB-9283-4164-A514-EB322E7E2302}

Custom Properties

- kind =

Connections

Connector	Source	Target	Notes
ControlFlow Source -> Destination	Public Attest Assessment	Public Assessment Complete	

Trigger

Type: **ActivityInitial**
Status: Proposed. Version 1.0. Phase 1.0.
Package: Use Cases *Keywords:*
Detail: Created on 1/12/2011. Last modified on 1/31/2011.
GUID: {FCD57666-AAFD-4fde-A0EC-E5EB33856D1B}

Set of trigger events to create the assessment

Custom Properties

- kind =

Connections

Connector	Source	Target	Notes
ControlFlow Source -> Destination	Public Trigger	Public Chart information needed?	

Connector	Source	Target	Notes

Clinician

Type: ActivityPartition
Status: Proposed. Version 1.0. Phase 1.0.
Package: Use Cases **Keywords:**
Detail: Created on 1/31/2011. Last modified on 1/31/2011.
GUID: {85A872A4-8A11-4b46-9F68-D72BABCEC35E}

Custom Properties

- isDimension = False
- isExternal = False

Make Observation

Type: Activity
Status: Proposed. Version 1.0. Phase 1.0.
Package: Use Cases **Keywords:**
Detail: Created on 1/12/2011. Last modified on 1/31/2011.
GUID: {DEF0AC7F-B126-4700-89E2-D484250EB3F2}

A clinician makes an observation about a patient

Custom Properties

- isReadOnly = False
- isSingleExecution = False
- postcondition =
- precondition =
- parameterName =

Connections

Connector	Source	Target	Notes
<u>ControlFlow</u> Source -> Destination	Public Review Relevant Chart Information	Public Make Observation	
<u>ControlFlow</u> Source -> Destination	Public Make Observation	Public Record Observation	
<u>ControlFlow</u> No	Public	Public	

Connector	Source	Target	Notes
Source -> Destination	Chart information needed?	Make Observation	

Record Observation

Type: **Activity**
Status: Proposed. Version 1.0. Phase 1.0.
Package: Use Cases **Keywords:**
Detail: Created on 1/12/2011. Last modified on 1/31/2011.
GUID: {E4415F05-FF8D-4cdf-A92F-B3F49B500162}

A system user records an observation about a patient

Custom Properties

- isReadOnly = False
- isSingleExecution = False
- postcondition =
- precondition =
- parameterName =

Connections

Connector	Source	Target	Notes
ControlFlow Source -> Destination	Public Make Observation	Public Record Observation	
ControlFlow Source -> Destination	Public Record Observation	Public Complete?	
NoteLink Source -> Destination	Public <anonymous>	Public Record Observation	

Review Relevant Chart Information

Type: **Activity**
Status: Proposed. Version 1.0. Phase 1.0.
Package: Use Cases **Keywords:**
Detail: Created on 1/12/2011. Last modified on 1/31/2011.
GUID: {8975A1DC-3115-4ba7-9660-5EE77FBAE073}

A clinician reviews patient information in order to identify relevant information for an assessment or to identify questions or criteria for use in clinical observation

Custom Properties

Custom Properties

- isReadOnly = False
- isSingleExecution = False
- postcondition =
- precondition =
- parameterName =

Connections

Connector	Source	Target	Notes
ControlFlow Source -> Destination	Public Review Relevant Chart Information	Public Make Observation	
ControlFlow Yes Source -> Destination	Public Chart information needed?	Public Review Relevant Chart Information	

Chart information needed?

Type: **DecisionNode**
Status: Proposed. Version 1.0. Phase 1.0.
Package: Use Cases **Keywords:**
Detail: Created on 1/13/2011. Last modified on 1/31/2011.
GUID: {3A90478C-018E-4b9a-A095-4ECE926425CE}

Connections

Connector	Source	Target	Notes
ControlFlow No Source -> Destination	Public Complete?	Public Chart information needed?	
ControlFlow Source -> Destination	Public Trigger	Public Chart information needed?	
ControlFlow No Source -> Destination	Public Chart information needed?	Public Make Observation	
ControlFlow Yes Source -> Destination	Public Chart information needed?	Public Review Relevant Chart Information	
NoteLink	Public	Public	

Connector	Source	Target	Notes
Source -> Destination	<anonymous>	Chart information needed?	

Create Care Plan

Type: UseCase
Status: Proposed. Version 1.0. Phase 1.0.
Package: Use Cases **Keywords:**
Detail: Created on 1/19/2011. Last modified on 1/19/2011.
GUID: {1CD7A214-C865-47a7-A2C6-E462B51AB376}

Connections

Connector	Source	Target	Notes
<u>UseCaseLink</u> Source -> Destination	Public Clinician	Public Create Care Plan	

Plan Intervention

Type: UseCase
Status: Proposed. Version 1.0. Phase 1.0.
Package: Use Cases **Keywords:**
Detail: Created on 1/19/2011. Last modified on 1/20/2011.
GUID: {8F16F528-D1F9-4462-A94A-7F95357F510B}

A clinician determines that a particular intervention is appropriate for a patient. The clinician records the intervention as planned and associates it with relevant observations and goals.

Connections

Connector	Source	Target	Notes
<u>Include</u> Source -> Destination	Public Update Care Plan	Public Plan Intervention	

Produce Summary Documentation

Type: UseCase
Status: Proposed. Version 1.0. Phase 1.0.
Package: Use Cases **Keywords:**
Detail: Created on 1/12/2011. Last modified on 1/24/2011.
GUID: {54D35BC9-3989-45ad-ABA2-011E51F8EFAE}

A system user causes a nursing summary for a patient to be generated to support a transfer, consultation, or other communication.

Connections

Connector	Source	Target	Notes
UseCaseLink Source -> Destination	Public Sender	Public Produce Summary Documentation	
NoteLink Source -> Destination	Public <anonymous>	Public Produce Summary Documentation	

Receive Summary Documentation

Type: **UseCase**
Status: Proposed. Version 1.0. Phase 1.0.
Package: Use Cases *Keywords:*
Detail: Created on 1/12/2011. Last modified on 1/24/2011.
GUID: {EBE42753-4604-4b60-84AE-4B06DFE4FC6D}

An interested person receives and reviews a nursing summary from another service provider

Connections

Connector	Source	Target	Notes
NoteLink Source -> Destination	Public <anonymous>	Public Receive Summary Documentation	
UseCaseLink Source -> Destination	Public Recipient	Public Receive Summary Documentation	

Update Care Plan

Type: **UseCase**
Status: Proposed. Version 1.0. Phase 1.0.
Package: Use Cases *Keywords:*
Detail: Created on 1/13/2011. Last modified on 1/19/2011.
GUID: {02F364FB-00AF-46c8-9D54-18274B6C6D1C}

A clinician indicates needed interventions, with recommended timing and other operational information, updates their completion, and records their effectiveness

Connections

Connector	Source	Target	Notes
Include Source -> Destination	Public Update Care Plan	Public Plan Intervention	
Include Source -> Destination	Public Update Care Plan	Public Update Intervention	
NoteLink Source -> Destination	Public <anonymous>	Public Update Care Plan	
UseCaseLink Source -> Destination	Public Clinician	Public Update Care Plan	

Activity diagram: Update Care Plan AD

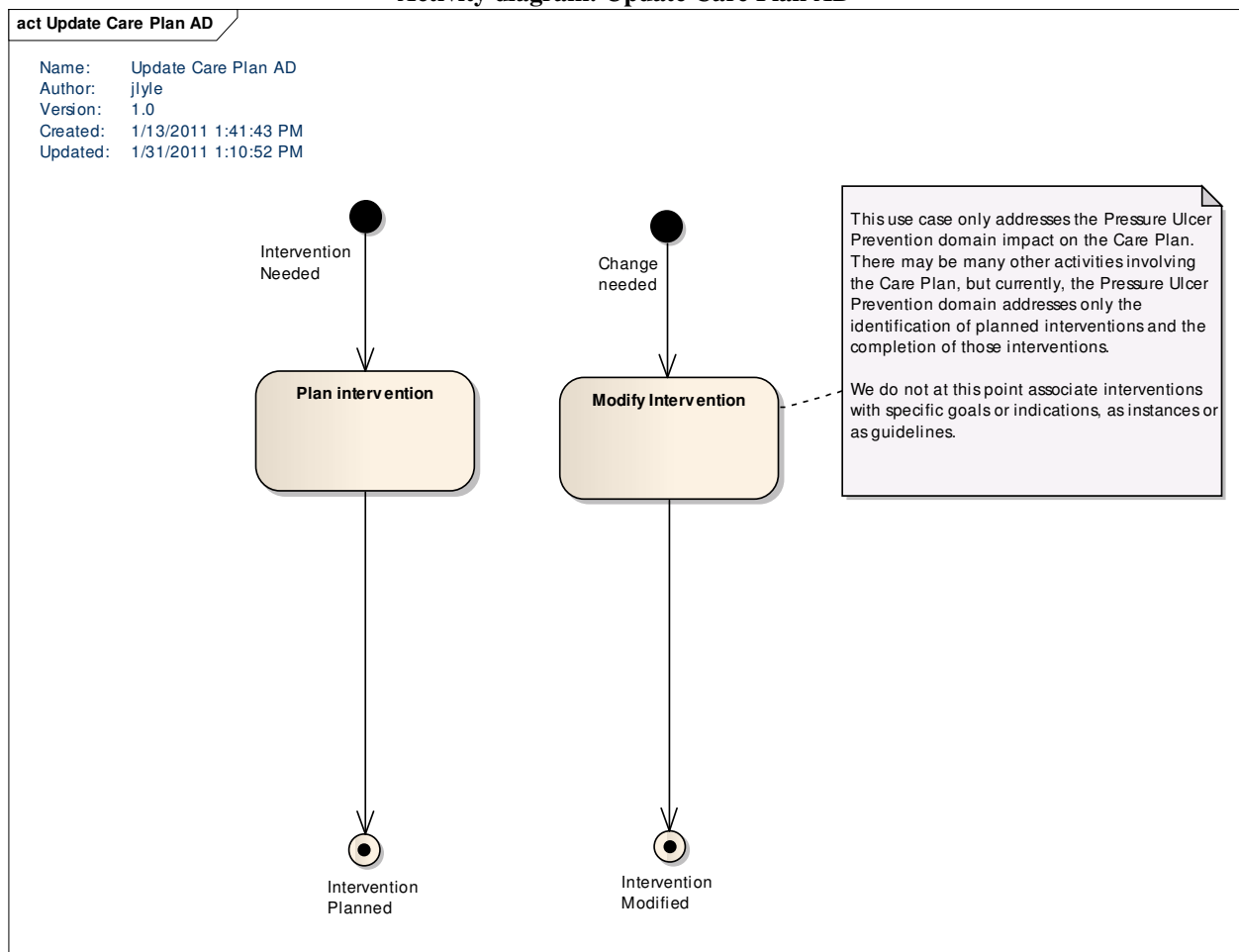


Figure: 4

Modify Intervention

Type: Activity

Status: Proposed. Version 1.0. Phase 1.0.
Package: Use Cases *Keywords:*
Detail: Created on 1/13/2011. Last modified on 1/31/2011.
GUID: {BA3B43A0-4A5A-460c-B99F-B44609B73C78}

A clinician records a change to an intervention

Custom Properties

- isReadOnly = False
- isSingleExecution = False
- postcondition =
- precondition =
- parameterName =

Connections

Connector	Source	Target	Notes
<u>ControlFlow</u> Source -> Destination	Public Modify Intervention	Public Intervention Modified	
<u>ControlFlow</u> Source -> Destination	Public Change needed	Public Modify Intervention	
<u>NoteLink</u> Source -> Destination	Public <anonymous>	Public Modify Intervention	

Plan intervention

Type: **Activity**
Status: Proposed. Version 1.0. Phase 1.0.
Package: Use Cases *Keywords:*
Detail: Created on 1/13/2011. Last modified on 1/31/2011.
GUID: {53E8EBAD-0891-4bf3-94EC-2A5FC97C726B}

A clinician defines an intervention intended to reduce the risk of pressure ulcers and adds it to the patient's care plan

Custom Properties

- isReadOnly = False
- isSingleExecution = False
- postcondition =
- precondition =
- parameterName =

Connections

Connector	Source	Target	Notes
ControlFlow Source -> Destination	Public Plan intervention	Public Intervention Planned	
ControlFlow No Source -> Destination	Public Plan complete?	Public Plan intervention	
ControlFlow Source -> Destination	Public Plan intervention	Public Plan complete?	
ControlFlow Source -> Destination	Public Intervention Needed	Public Plan intervention	

Record intervention results

Type: **Activity**
 Status: Proposed. Version 1.0. Phase 1.0.
 Package: Use Cases *Keywords:*
 Detail: Created on 1/13/2011. Last modified on 1/13/2011.
 GUID: {7D3E7CEC-85CB-4747-A71C-ECC000131E0F}

Custom Properties

- isReadOnly = False
- isSingleExecution = False
- postcondition =
- precondition =
- parameterName =

Plan complete?

Type: **DecisionNode**
 Status: Proposed. Version 1.0. Phase 1.0.
 Package: Use Cases *Keywords:*
 Detail: Created on 1/13/2011. Last modified on 1/13/2011.
 GUID: {D8E18AFA-6246-420d-9484-63E6FA69305E}

Connections

Connector	Source	Target	Notes
-----------	--------	--------	-------

Connector	Source	Target	Notes
ControlFlow No Source -> Destination	Public Plan complete?	Public Plan intervention	
ControlFlow Source -> Destination	Public Plan intervention	Public Plan complete?	
ControlFlow Yes Source -> Destination	Public Plan complete?	Public Intervention Planned	

ActivityInitial

Type: **ActivityInitial**
Status: Proposed. Version 1.0. Phase 1.0.
Package: Use Cases *Keywords:*
Detail: Created on 1/13/2011. Last modified on 1/13/2011.
GUID: {B5980F53-012B-4e71-AE08-781128CF823A}

Custom Properties

- kind =

Change needed

Type: **ActivityInitial**
Status: Proposed. Version 1.0. Phase 1.0.
Package: Use Cases *Keywords:*
Detail: Created on 1/13/2011. Last modified on 1/31/2011.
GUID: {843723DA-35FD-4a21-9296-FD58EAA5BAD2}

An intervention needs to be deleted, modified, associated with a goal, evaluated, recorded as complete, or otherwise modified

Custom Properties

- kind =

Connections

Connector	Source	Target	Notes
ControlFlow Source -> Destination	Public Change needed	Public Modify Intervention	

Intervention Modified

Type: ActivityFinal
Status: Proposed. Version 1.0. Phase 1.0.
Package: Use Cases **Keywords:**
Detail: Created on 1/13/2011. Last modified on 1/31/2011.
GUID: {03664F87-B204-485e-9C33-7226AFD03CB9}

The intervention has been updated

Custom Properties

- kind =

Connections

Connector	Source	Target	Notes
<u>ControlFlow</u> Source -> Destination	Public Modify Intervention	Public Intervention Modified	

Intervention Needed

Type: ActivityInitial
Status: Proposed. Version 1.0. Phase 1.0.
Package: Use Cases **Keywords:**
Detail: Created on 1/13/2011. Last modified on 1/31/2011.
GUID: {747A2143-4ADF-40f4-AC0B-3F7041E5560F}

A Pressure Ulcer Risk Assessment suggests that a patient needs a care plan to reduce the risk of pressure ulcers. The clinician determines that the care plan should include certain interventions.

Custom Properties

- kind =

Connections

Connector	Source	Target	Notes
<u>ControlFlow</u> Source -> Destination	Public Intervention Needed	Public Plan intervention	

Intervention Planned

Type: ActivityFinal
Status: Proposed. Version 1.0. Phase 1.0.
Package: Use Cases **Keywords:**
Detail: Created on 1/13/2011. Last modified on 1/31/2011.

GUID: {9D4EB53C-EAA4-4cff-829D-202C12D877E6}

The care plan contains the intervention planned by the clinician

Custom Properties

- kind =

Connections

Connector	Source	Target	Notes
ControlFlow Source -> Destination	Public Plan intervention	Public Intervention Planned	
ControlFlow Yes Source -> Destination	Public Plan complete?	Public Intervention Planned	

Update Intervention

Type: UseCase
Status: Proposed. Version 1.0. Phase 1.0.
Package: Use Cases *Keywords:*
Detail: Created on 1/19/2011. Last modified on 1/20/2011.
GUID: {36BC3EDF-960E-4ac9-8241-8CDC773BCD6A}

A clinician changes an existing intervention record, whether to modify its definition, to update its status (e.g., to "completed"), or to change its association with an observation or goal.

Connections

Connector	Source	Target	Notes
Include Source -> Destination	Public Update Care Plan	Public Update Intervention	

Update Pressure Ulcer Risk Assessment

Type: UseCase
Status: Proposed. Version 1.0. Phase 1.0.
Package: Use Cases *Keywords:*
Detail: Created on 1/19/2011. Last modified on 1/20/2011.
GUID: {2BD7841B-A0A1-48ff-AB2A-EB86617847CB}

Connections

Connector	Source	Target	Notes
UseCaseLink Source -> Destination	Public Clinician	Public Update Pressure Ulcer Risk Assessment	
UseCaseLink Source -> Destination	Public Patient	Public Update Pressure Ulcer Risk Assessment	

Pressure Ulcer Risk Assessment

Type: **InformationItem**
Status: Proposed. Version 1.0. Phase 1.0.
Package: Use Cases *Keywords:*
Detail: Created on 1/12/2011. Last modified on 1/12/2011.
GUID: {8A6DCFF6-0871-4482-9B85-E5BA4148C00C}