

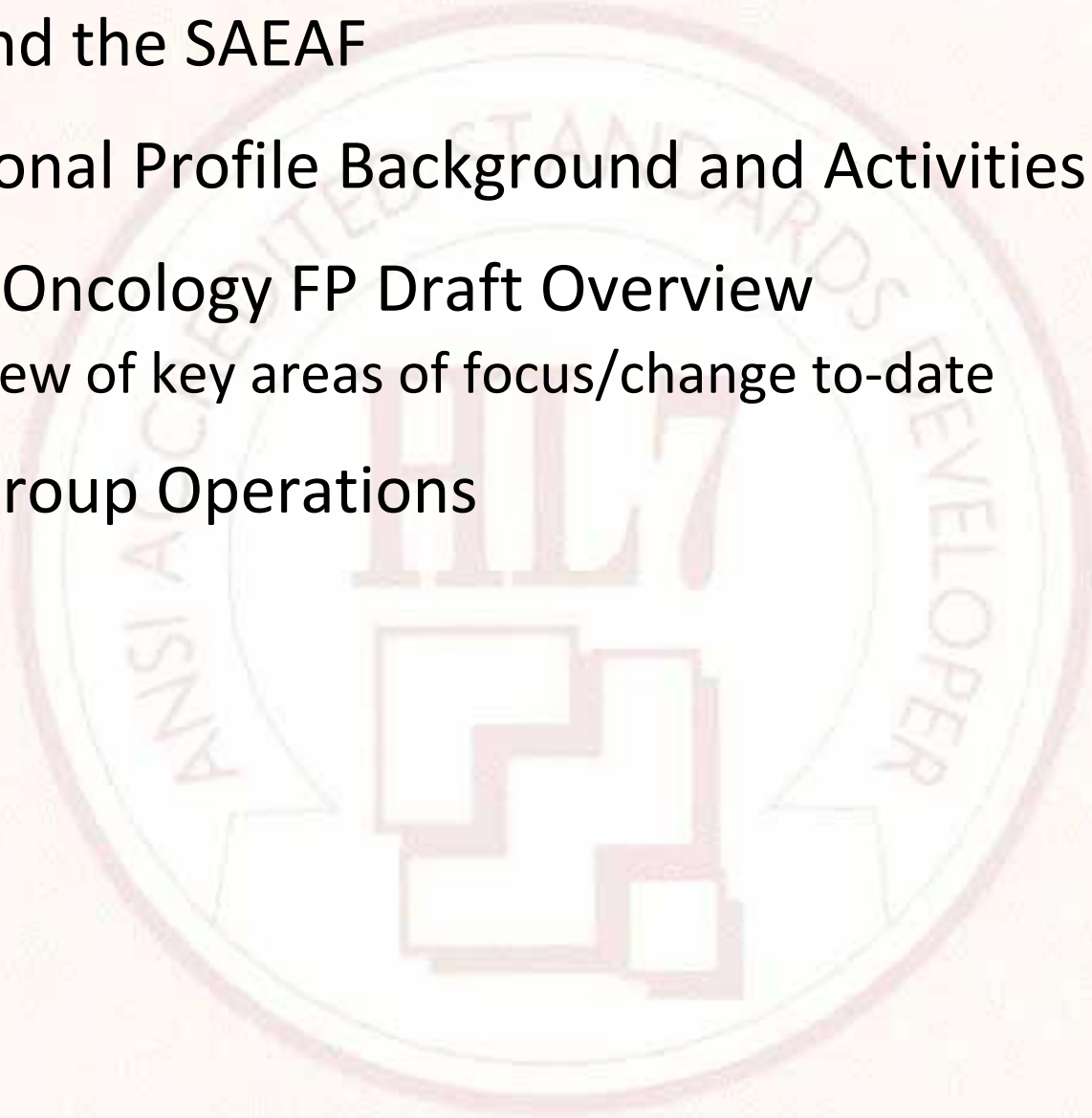
HL7 Ambulatory Oncology Functional Profile

HL7 Phoenix WGM Update

January 19th, 2010

Agenda

- EHR and the SAEAF
- Functional Profile Background and Activities to Date
- EHR-S Oncology FP Draft Overview
 - Review of key areas of focus/change to-date
- Task Group Operations



Introductions

- Task Group Leaders

- Helen Stevens Love (helen.stevens@shaw.ca)

- Phone: 250.598.0312

- Carla Wood : (cwood@altossolutions.com)

- Phone: 901.474.1464

- Task Group Support

- Clinical Engagement & Support

- Christine Bester (christine.bester@gpinformatics.com)

- Architecture & SAEAF Support

- Paul Boyes (pboyes@guidewirearchitecture.com)

EHR and the SAEAF

- caEHR Project Background:
 - National Cancer Institute (NCI) is developing an Electronic Health Record for use in the ambulatory oncology environment. (caEHR)
 - The “application” will be built using a “semantically-aware Services-Oriented Architecture” (semantic SOA) approach
 - Over the next 6-to-20 months, the project team will define, design, develop, and deploy a series of prioritized “business capability services” to participating ambulatory oncology sites.
 - Incremental release of service specifications and service code-base suitable for integration with existing systems
 - The iterative/incremental process (one-month iterations and 3-month Release Cycles to stakeholders) will ultimately result in a fully functional reference implementation of an ambulatory oncology EHR (caEHR)
 - The project will be developed using the SAEAF and is expected to contribute to both NCI’s and HL7’s experience with building SAEAF-compliant service specifications and implementations including
 - Specification of traceable service contracts
 - Development of certifiable implementation components
 - All documentation will be available at:
 - <https://wiki.nci.nih.gov/display/EAWiki/Line+of+Business++caEHR>

NCI Goals of the caEHR Project

- #1: Utilize all relevant content from EHR FM R1.1 and R2.0
 - Validated by caEHR stakeholders
- #2: Utilize all relevant content for EHR Interoperability specification
 - Validated by caEHR stakeholders
- #3: Contribute additional requirements to EHR WG for consideration in EHR FM R2.0 (including abstraction from ambulatory oncology context to more general EHR context)
- #4: Provide EHR WG with a robust localization/constraint of all caEHR requirements for consideration as an ambulatory oncology Functional Profile (based on EHR FM1 and/or FM 2)

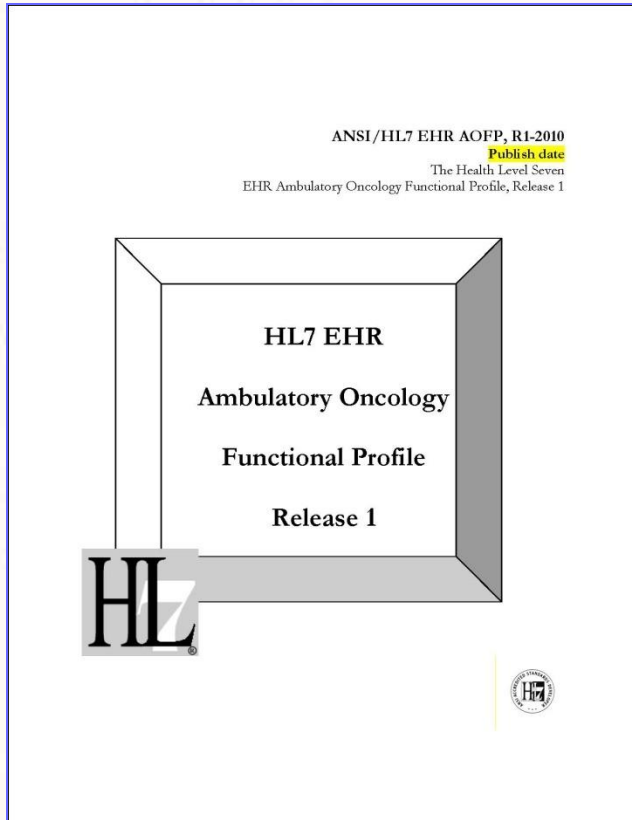
“SAEAF” Alpha engagement: Potential Benefits to EHR WG

- #1 and #3: Provide EHR WG with SAEAF-compliant artifacts which demonstrate the traceable mapping of
 - Requirements (CIM) →
 - Business Use Cases (CIM/PIM) →
 - Service Functional Profiles with associated binding to Semantic Profiles (PIM)
 - ECCF terminology
 - HL7 RIM, data type, and vocabulary constructs will be utilized
- #2: Provide EHR WG with SAEAF-compliant artifacts which integrate caEHR-relevant content from Interoperability spec into the larger requirements fabric for caEHR
 - Opportunity for harmonization fo EHR FM2 and EHR Interoperability spec
- #4: Provide EHR WG with a SAEAF-compliant approach to defining EHR Functional Profiles which ensures
 - consistent levels-of-abstraction in FP
 - clear distinction between localization/constraint and extension
 - Extension → NEW REQUIREMENT

FP Specific Background and Activities to Date

- “Baseline” profile was devised as part of the National Cancer Institute’s (NCI) Cancer EHR (caEHR) project and incorporates:
 - Requirements from the Center for Cancer Prevention and Treatment (“Cancer Center”) at St. Joseph Hospital of Orange (SJO) EMR Request for Information (RFI) (January 2009).
 - Clinical Oncology Requirements (CORE) developed in collaboration with the American Society of Clinical Oncology (ASCO), NCI, and members of the NCI Community Cancer Center Program (NCCCP).
 - caEHR Domain Expert team input.
- Targeted business scope of “baseline” is **ambulatory oncology**.
 - Some initial discussion in task group regarding extension to non-ambulatory environments.

Functional Profile Overview Document



Preface

- i. Notes to Readers
- ii. Acknowledgements
- iii. Realm
- iv. Changes from Previous Release

1 Introduction (Reference)

1.1 Background

- 1.1.1 HL7 Electronic Health Record Functional Requirements
- 1.1.2 Certification Commission on Health Information Technology
- 1.1.3 Cancer Electronic Health Record Project
- 1.1.4 Project Methods and Project Plan

1.2 Standards Basis for the Oncology Definition

1.3 Systems, components and Applications

1.4 Interoperability

1.5 Language

- 1.5.1 Glossary

2 Ambulatory Oncology Storyboards (Reference)

3 Ambulatory Oncology Narratives (Normative)

4 References (Reference)

5 Conformance Clause (Normative)

6 Functional Profile Organization (Reference)

7 Direct Care Functions (Normative)

8 Supportive Functions (Normative)

9 Information Infrastructure Functions (Normative)

3. Ambulatory Oncology Narratives (Normative)

	Page		Page		
3.1	Standard Assessments	19	3.13	Scheduling	24
3.2	Clinical Pathways/Guidelines	19	3.14	Report Generation	24
3.3	Treatment and Care Plans	20	3.15	Communications	25
3.4	Chemotherapy	20	3.16	Genealogical Relationships	25
3.5	Immunizations	21	3.17	Interpersonal Relationships	26
3.6	Clinical Research	22	3.18	Pain Management Tools	27
3.6.1	Research Identifiers	22	3.19	Adverse Event	27
3.7	Order Sets	22	3.20	Infrastructure	27
3.8	Templates	23	3.20.1	Data Elements	27
3.9	Order Alerts	23	3.21	Regulation Criteria	27
3.10	Referrals	24	3.21.1	Privacy Functions	27
3.11	Medical Devices	24	3.21.2	Security Functions	27
3.12	Oncology Registries	24	3.21.3	Audit Trail Functions	28

These are early drafts & need task group review

Areas of Focus from Oncology

- Overview of main areas of focus for the Oncology group (to-date). Note: only DC sections are listed, but S and IN sections also impacted)
- Support for Receiving Referrals
 - Proposed new section to FM Release 2.0
 - DC.1.1.3.1 (Capture Referral Request)
- Support for Clinical Research
 - Incorporation of sections from Clinical Research FP and R2.0
 - DC.1.1.1.2 (Identify and Maintain Patient Research Record)
 - DC.1.2.1 (Manage History of Present Illness)
 - DC.1.2.2 (Manage History for Clinical Research)\
 - DC.2.2.3 (Support for Research Protocols Relative to Individual Patient Care)

Areas of Focus from Oncology continued

- Support for Ambulatory environment
 - Incorporation of sections from CCHIT Ambulatory FP
- Support for discrete data management
 - Refinement of requirements and criteria throughout FP
- Support for enhanced documentation
 - DC.2.1.1 (Support for Standard Assessments)
 - DC.1.5.1 (manage Physical Exam)
 - DC.1.5.2 (Manage Progress Notes)
- Support for Oncology Medication (e.g. Chemotherapy)
 - DC.1.7.1 (Manage Medication Orders)
 - DC.1.7.1.2 (Manage un-coded/free-text Medication Orders)
 - DC.1.8.2 (Manage Medication Administration)
 - DC.2.3.1 (Support for Medication Ordering)
 - DC.2.3.2 (Support for Medication, Therapy and Immunization Administration)

Task Group Operations Discussion

- Project conference call bi-weekly starting Jan 28th at 1pm EST.
- Discussion Approach
 - Each meeting we will select a document to be reviewed for the next meeting
 - Draft documents will/have be posted to the project wiki (dated)
 - Members will download, review and comment within the document and send to Helen and/or project List by end-of-day Tuesday.
 - Helen will incorporate all input and post to wiki by end-of-day Wednesday.
 - During call team will review comments and determine changes to materials.
 - Helen will incorporate agreed changes and update document (and status) on the wiki by EOD Friday.
 - Conversation documents will be produced as needed to support discussion.
- Engagement / Communication Tools
 - HL7 list is setup: ehroncology@lists.hl7.org
 - HL7 wiki is setup: [http://wiki.hl7.org/index.php?title=Oncology EHR Functional Profile](http://wiki.hl7.org/index.php?title=Oncology_EHR_Functional_Profile)

January 28th Proposed Agenda

1. Welcome and Introductions
2. Review discussion approach and adjust based on input and experiences so far
3. Members to identify other potential interested parties
4. Document for Review:
 - **Functional Profile Overview Document** - Last update 2010/01/18
 - [Media:caEHR Ambulatory Oncology EHR HL7 Functional Profile.doc](#)
5. Decision on document for review at next call

Next Steps

- Members to download documents from wiki and submit first comments by EOD Tuesday (Jan 26th).
 - **Functional Profile Overview Document** - Last update 2010/01/18
 - [Media:caEHR Ambulatory Oncology EHR HL7 Functional Profile.doc](#)
- Any questions or issues – send to Helen & Carla
 - Helen.stevens@gpinformatics.com
 - cwood@altossolutions.com
 - Or to the list ehroncology@lists.hl7.org

Thank you

- Questions?

