



Occupational Data for Health (ODH) Information Model

Genny Luensman, PhD

Shared at HL7 Meeting

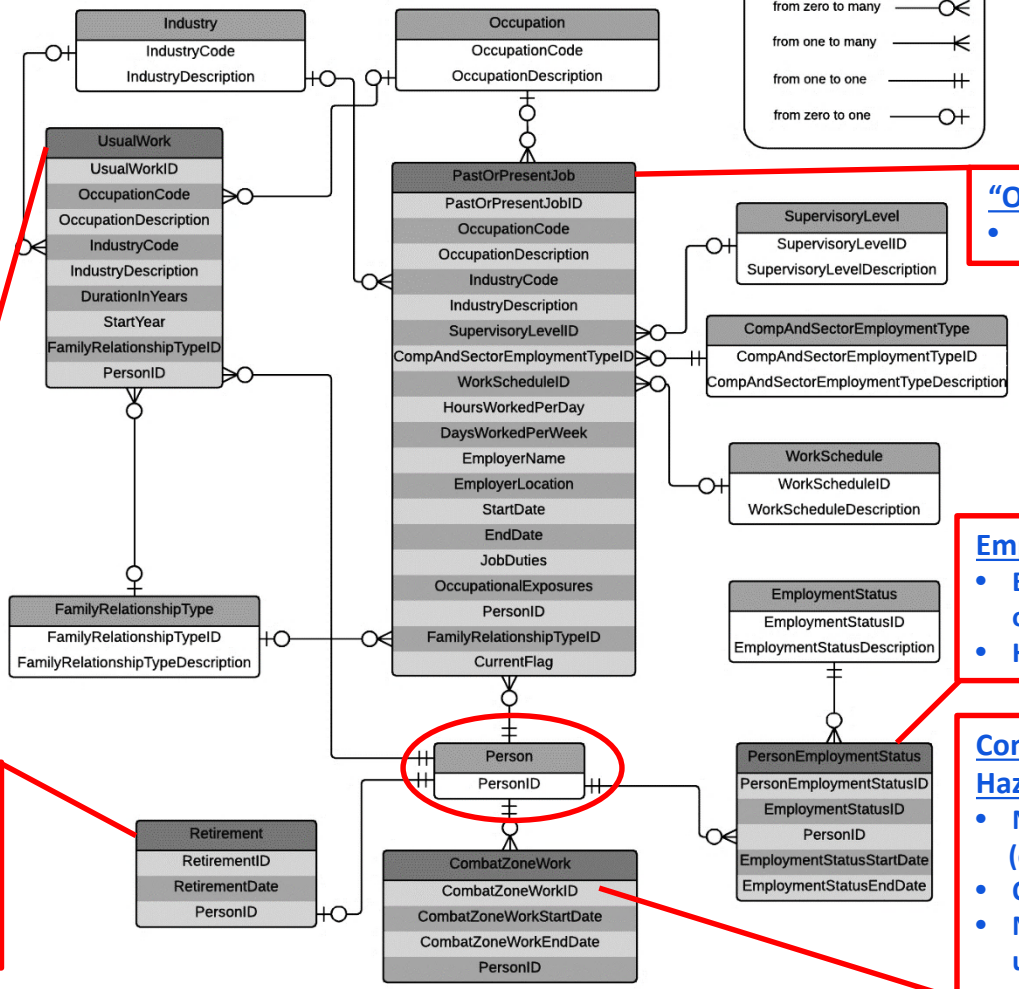
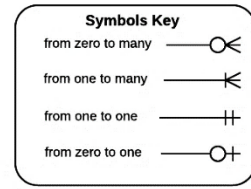
September 10-15 2017

Goal: Facilitate Improving Worker Health

- Objective: Enhance OH surveillance data collection
 - Data structured at the source, i.e., EHRs
- Objective: Increase opportunities for knowledge dissemination
 - Structured data needed to trigger (right person, place, time)
 - Awareness for events, newly discovered conditions
 - Support prevention, diagnosis, management, treatment
 - *Also provides clear value to those burdened by data collection*



ODH Information Model Diagram (Draft)



Longest Held Occupation

- Could be aggregate of many jobs
- Longest-held industry in relation to longest-held occupation
- No history retained

“Occupational History”

- Current and past jobs

Employment Status

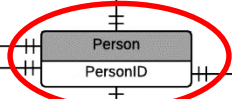
- Employed, Unemployed, or Not-in-Labor-Force
- History retained

Combat Zone or Hazardous Duty Work

- Not limited to military (e.g., DOD contractors)
- Only date ranges
- Not linked to a job or usual occupation entry

Retirement

- Defined as “self-identified”
- Only start date
- Not linked to a job entry or usual occupation entry



Past or Present Job Data Elements (Draft)



Occupation
(CDC_Census)



Industry
(CDC_Census)

	1 st line supervisor
	Manager
	Rank/Rating: E1-9, W1-5, O1-10

Supervisory Level, Rank/Rating

Employment Type

- Self-employed
- Unpaid worker (e.g., family farm/business)

**Compensation/Sector
Employment Type**

Paid work, self-employed
Paid work, not self-employed
Unpaid work, self-employed
Unpaid work, not self-employed
Paid work, local government
Paid work, state government
Paid work, US federal government
Paid work, U.S. Armed Forces
Voluntary work

PastOrPresentJob
PastOrPresentJobID
OccupationCode
OccupationDescription
IndustryCode
IndustryDescription
SupervisoryLevelID
CompAndSectorEmploymentTypeID
WorkScheduleID
HoursWorkedPerDay
DaysWorkedPerWeek
EmployerName
EmployerLocation
StartDate
EndDate
JobDuties
OccupationalExposures
PersonID
FamilyRelationshipTypeID
CurrentFlag

Past or Present Job Data Elements (Draft)

Regular Day Shift
Regular Evening Shift
Regular Night Shift
Rotating or Irregular Shift with Nights
Rotating or Irregular Shift without Nights
Other Shift



Schedule



Hours per week (avg.)
(allows decimal)

Days per week (avg.)
(allows decimal)



Employer
Employer Location

Job Duties
(free text)

Occupational Exposures
(free text &/or structured elements)

PastOrPresentJob
PastOrPresentJobID
OccupationCode
OccupationDescription
IndustryCode
IndustryDescription
SupervisoryLevelID
CompAndSectorEmploymentTypeID
WorkScheduleID
HoursWorkedPerDay
DaysWorkedPerWeek
EmployerName
EmployerLocation
StartDate
EndDate
JobDuties
OccupationalExposures
PersonID
FamilyRelationshipTypeID
CurrentFlag

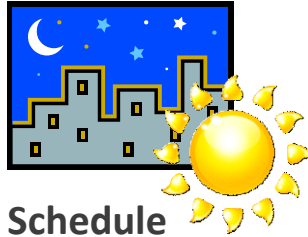
Past or Present Job Data Elements (Draft)



Occupation



Supervisory Level,
Rank/Rating



Schedule



Employer
Employer Location



Industry

- Employment Type**
- Self-employed
 - Unpaid worker (e.g., family farm/business)

Compensation/Sector
Employment Type



Hours per week
Days per week

Job Duties

Occupational
Exposures

PastOrPresentJob
PastOrPresentJobID
OccupationCode
OccupationDescription
IndustryCode
IndustryDescription
SupervisoryLevelID
CompAndSectorEmploymentTypeID
WorkScheduleID
HoursWorkedPerDay
DaysWorkedPerWeek
EmployerName
EmployerLocation
StartDate
EndDate
JobDuties
OccupationalExposures
PersonID
FamilyRelationshipTypeID
CurrentFlag

For more information, contact CDC
1-800-CDC-INFO (232-4636)
TTY: 1-888-232-6348 www.cdc.gov

The findings and conclusions in this report are those of the authors and do not necessarily represent the official position of the Centers for Disease Control and Prevention.

