

# KNOWLEDGE MANAGEMENT FRAMEWORK

## AN HSPC SERVICES PLATFORM FOR REAL TIME DECISION SUPPORT

HIMSS 2017



# HEALTH SERVICES PLATFORM CONSORTIUM

- Advocates for standards-based services, data models, and open architecture.
- HL7, OMG, IHTSDO and others have established a foundation for a services platform capable of solving real-world clinical problems today.
- CDS demonstrations illustrate how open architecture and collaborative research can make advanced cognitive support at the bedside a reality.



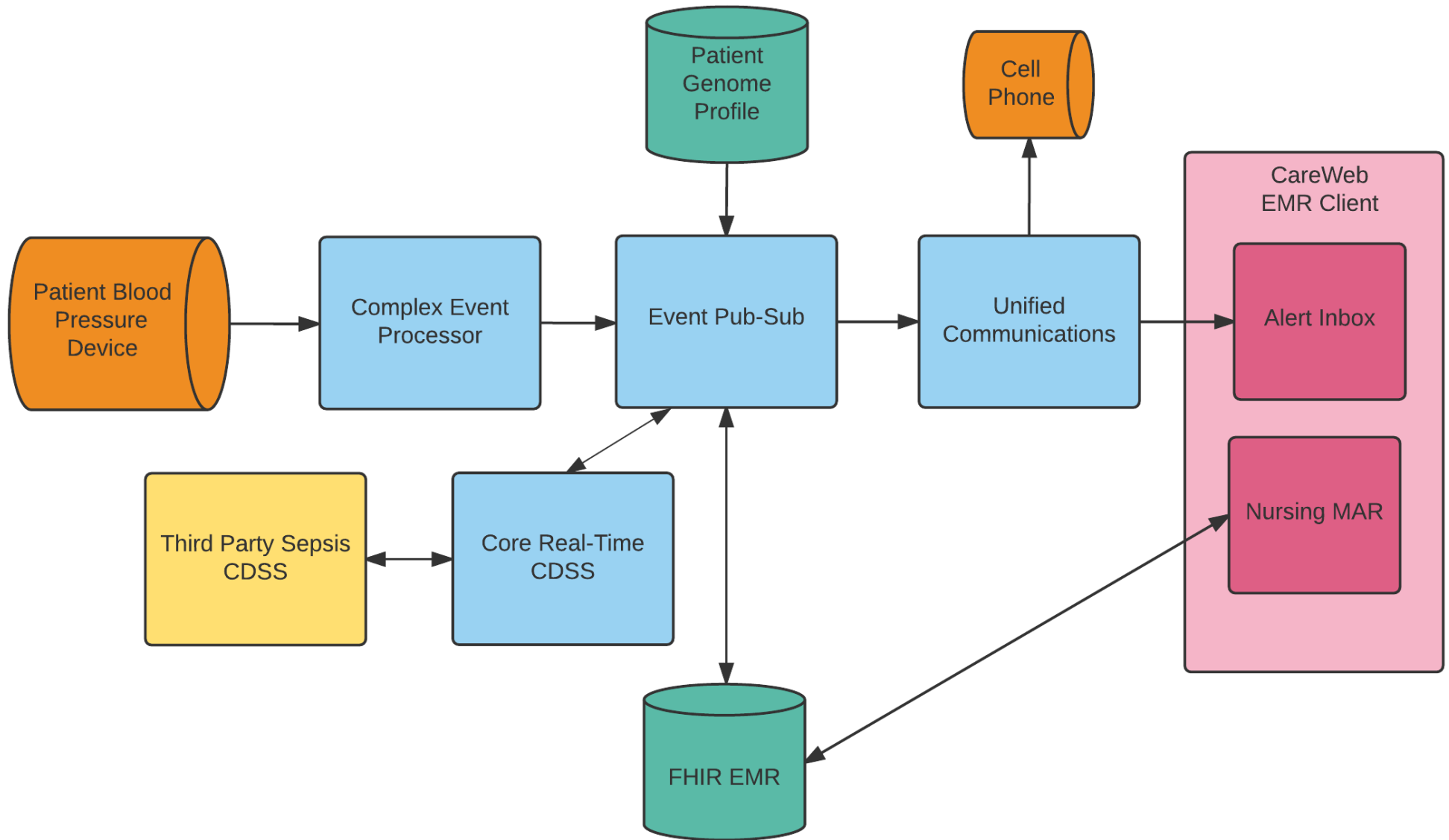
# HL7 STANDARDS UTILIZED IN THIS HSPC DEMO

This knowledge management framework leverages:

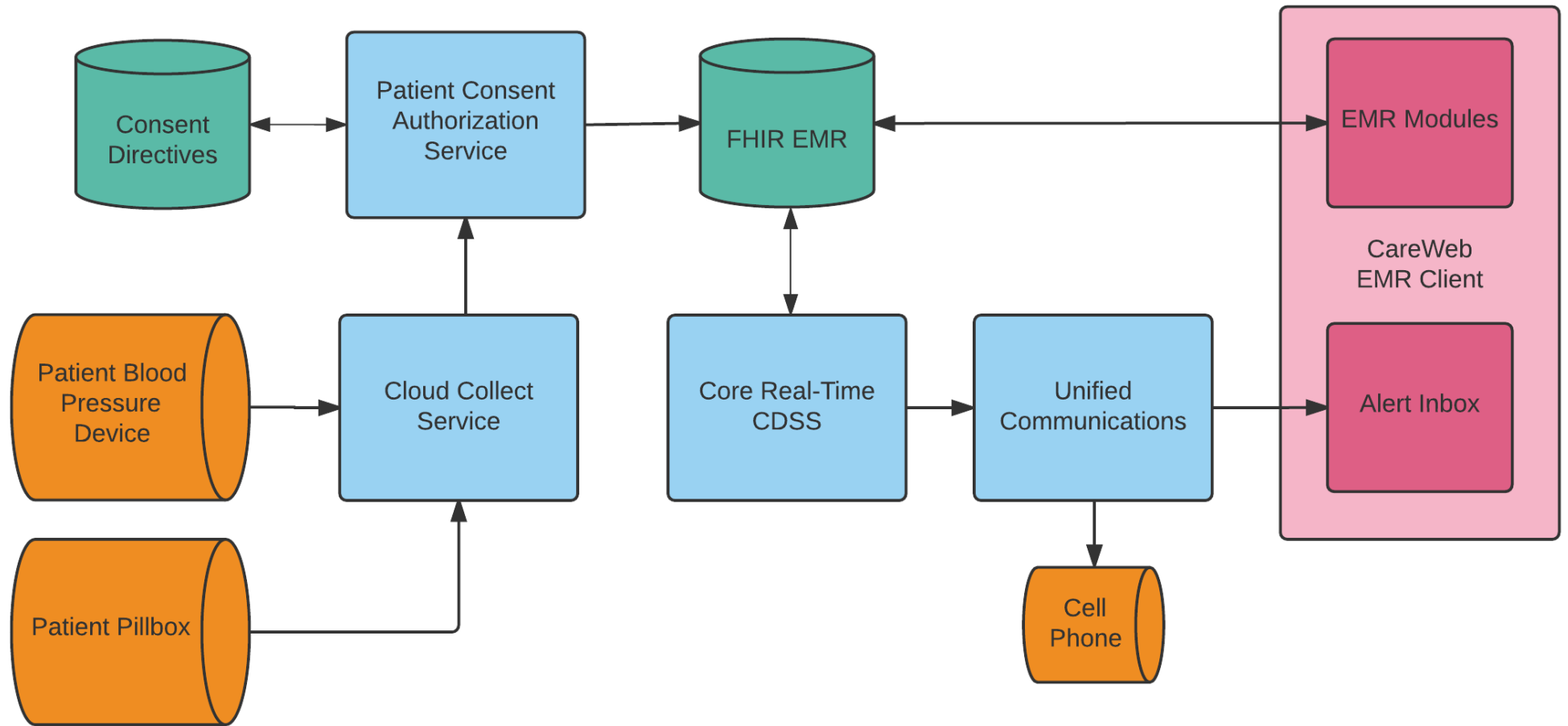
- HL7 Fast Healthcare Interoperability Resources [FHIR]
- HL7 Decision Support Service [DSS]
- HL7 Unified Communications [UCOM]
- HL7 Event Publish & Subscribe [EPS]
- HL7 FHIR Consent Directives
- HL7 Security Labels/Privacy Tags
- Devices on FHIR
- Many others.....



# DEMONSTRATION #1 COMPONENTS



# DEMONSTRATION #2 COMPONENTS



**HSPC** healthcare services platform consortium™  
 THE HEALTHCARE INNOVATION ECOSYSTEM

and

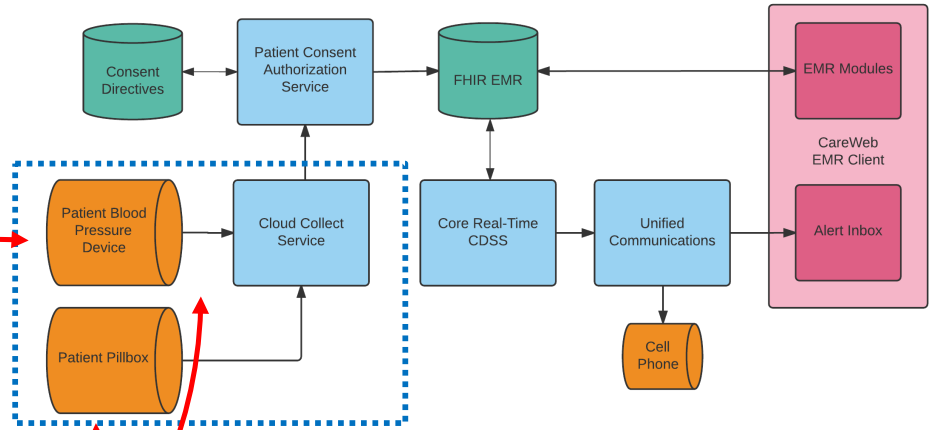
**Devices on FHIR®**



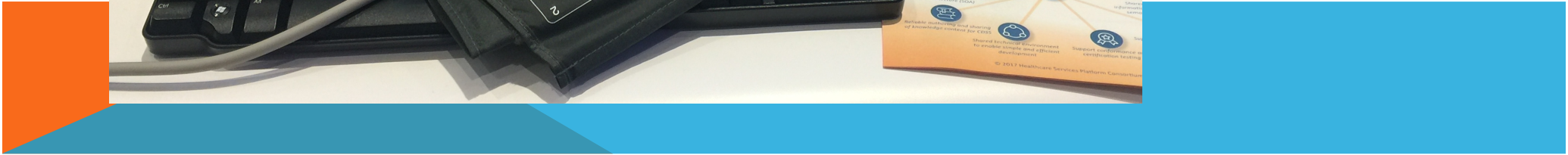
*True interoperability, Manageable complexity*

[www.hspsconsortium.org](http://www.hspsconsortium.org)

©Healthcare Services Platform Consortium, Inc.



**Philips Gateway**



# CONCLUSION....

- Existing services, data models, and architecture can be used to establish a standards-based SOA platform
- HL7 standards can be leveraged to make very sophisticated capabilities a bedside reality.
- Encouragement for our Federal Partners to contribute even more in standards development organizations and to expect better standards-compliance from its technology vendors.
- Both are critical to developing truly interoperable systems and the modern, robust knowledge management ecosystem upon which healthcare will increasingly rely.

