



## Create a new project for a new Functional Profile

The first step in the creation of a new Functional profile is the creation of a new project in Enterprise Architect, EA. This is done by using the Start Page of Enterprise Architect.

The second step is the loading of the Base Model, see '2LoadBaseModel.pdf' in chapter 'Creation'.

The third step is the creation of a package for the new Functional Profile, see '3CreatePackageforFP.pdf' in chapter 'Creation'.

The last step is the creation of the UML diagram for the Profile Definition, see '5CreateUMLmodelNewFP.pdf' in chapter 'Creation'.

**NOTE:** be sure that you have installed the latest version of the extension before you are going to develop a new functional profile! Contact the EHR WG co-chairs to get the latest version. Name of the extension is 'HL7\_FM\_EA\_Extension jjjjmmdd'.

Check regularly if a new version is available!

### Create a new project in EA:

Open EA using the shortcut on your computer or go to start and select EA. The result is shown in figure 1.

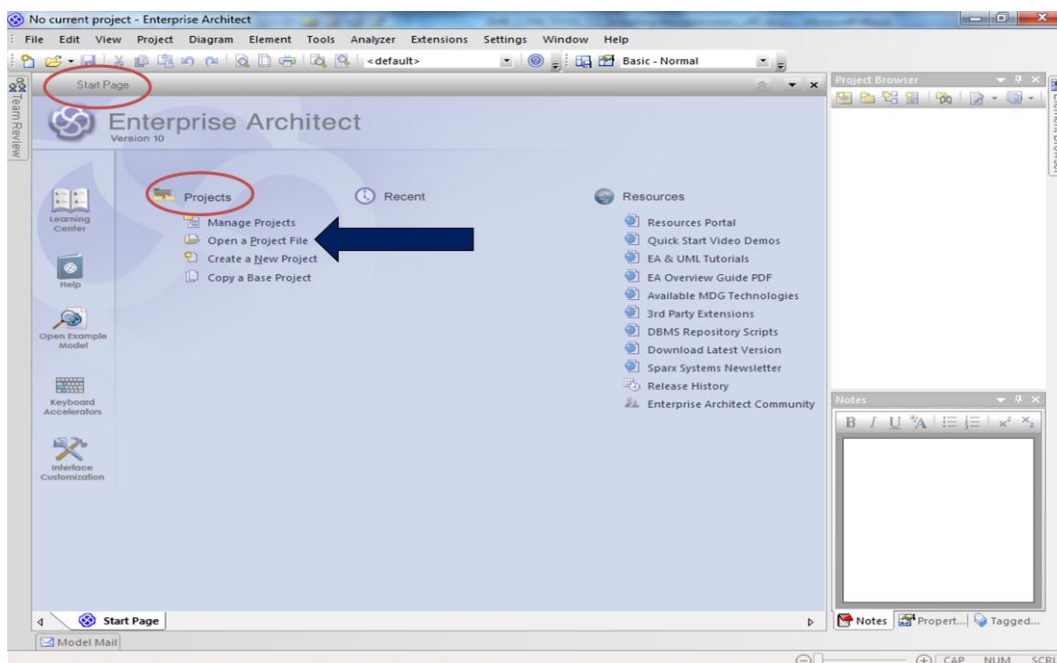


Figure 1. Start Page of EA.

- Select 'Create a New Project'.
- You will get the Windows Explorer.

- Select the folder in where you want to save the new project. Give the project a name, e.g Child Health Functional Profile, and click on Save.
- The Model Wizard of EA will be shown, but you can cancel that.
- In EA the new project is shown in the project browser. See figure 2.

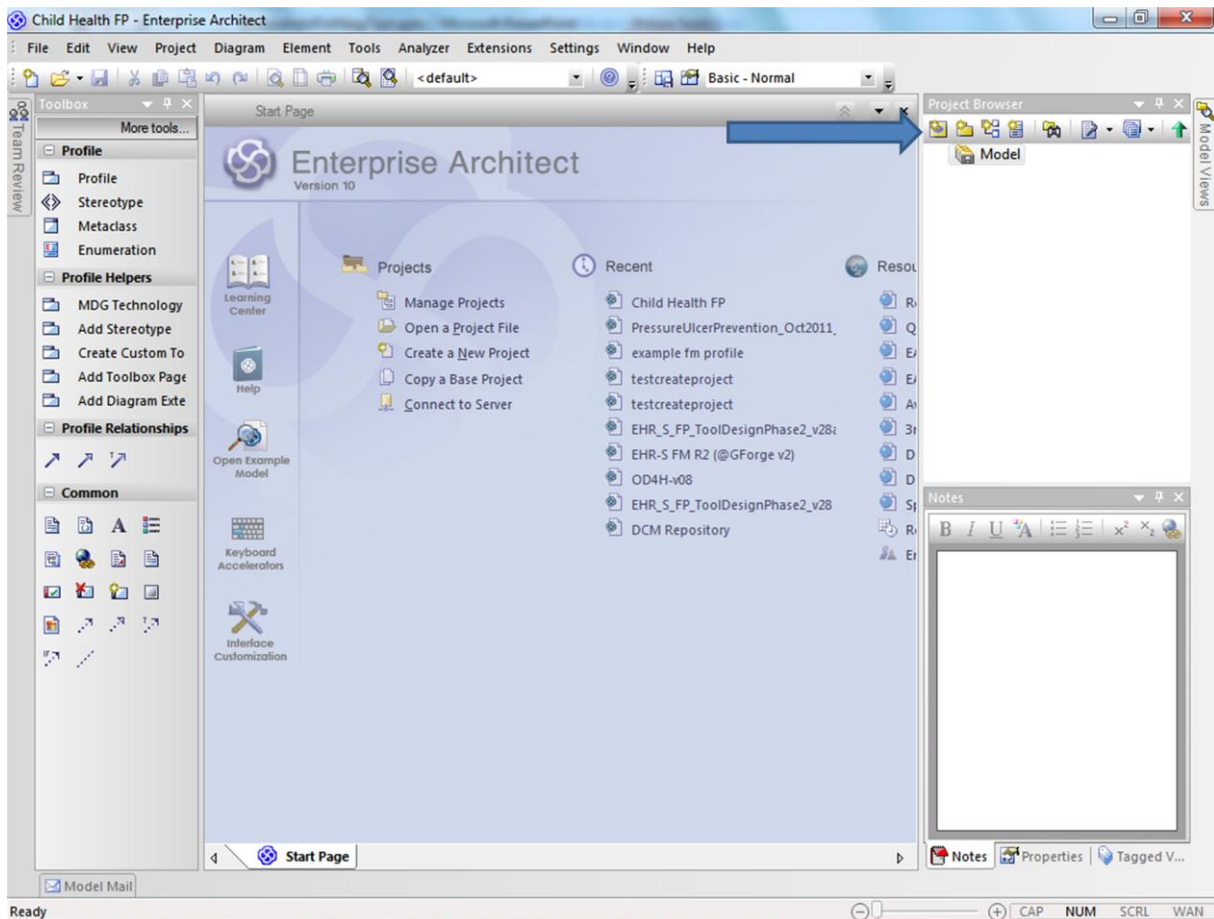


Figure 2. The new project in the Project Browser.

- In the project you need to create a View. Right click on 'Model' in the Project Browser and select 'Add' and select 'Add View'. See figure 3.

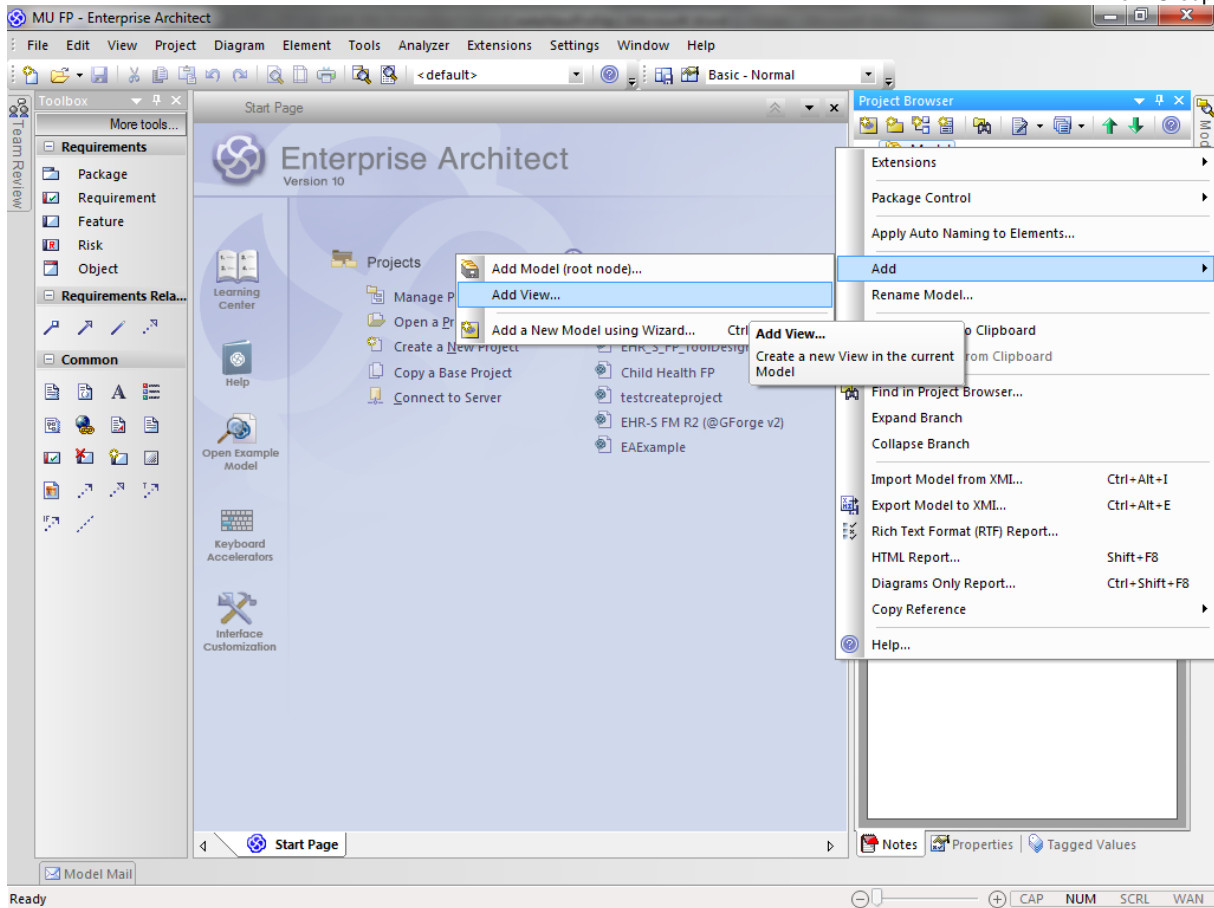


Figure 3. Adding a View in the new project.

- Select 'simple' from the list (figure 4) and give the view a name, e.g. Meaningful Use Functional Profile, MU FP. After that select 'OK'. The name of this view is the name of the Functional Profile you want to create. See figure 4.

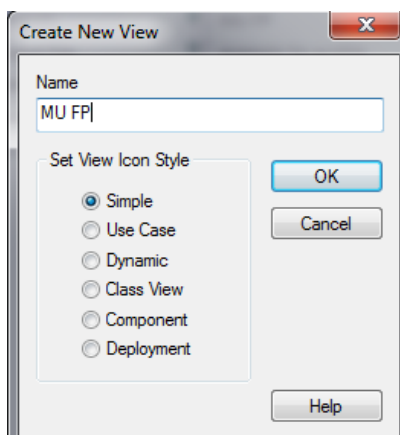


Figure 4. Giving the view a name.

- In that View you need to create one Package for the Profile Definition. The Profile Definition is based on the Base Model. In the Profile Definition you define the new Functional Profile.
- Right click on the package 'View' and select 'Add' and then 'Add package'. See figure 5.

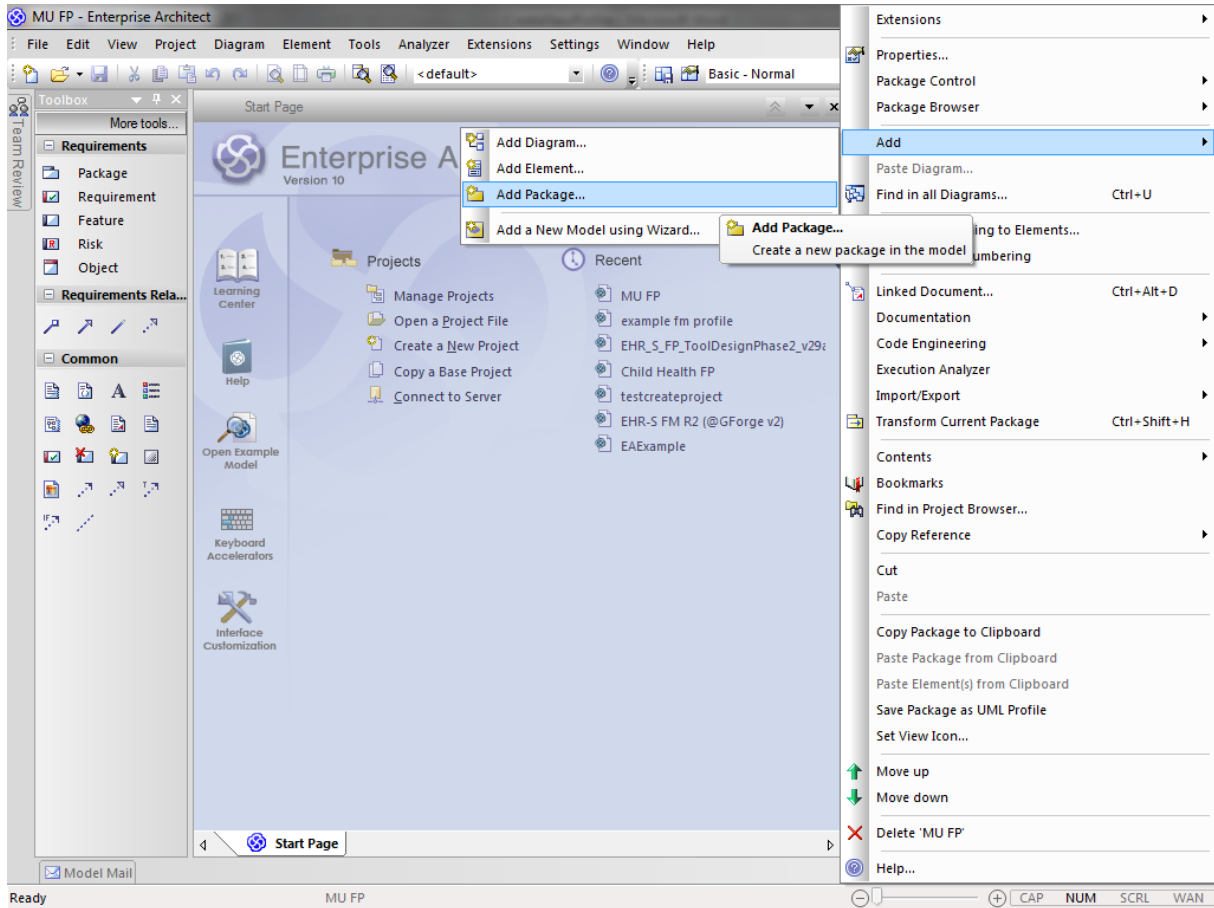


Figure 5. Adding a package to the 'View' of the new project.

- Give the package the name 'Profile Definition' in the Name field. See figure 6.
- Choose for 'Automatically add new diagram'.

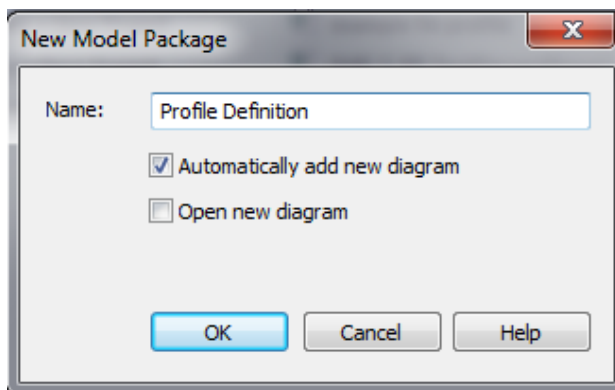


Figure 6. Giving the new package a name.

- Select 'UML Structural' and for Diagram Type 'Package'.

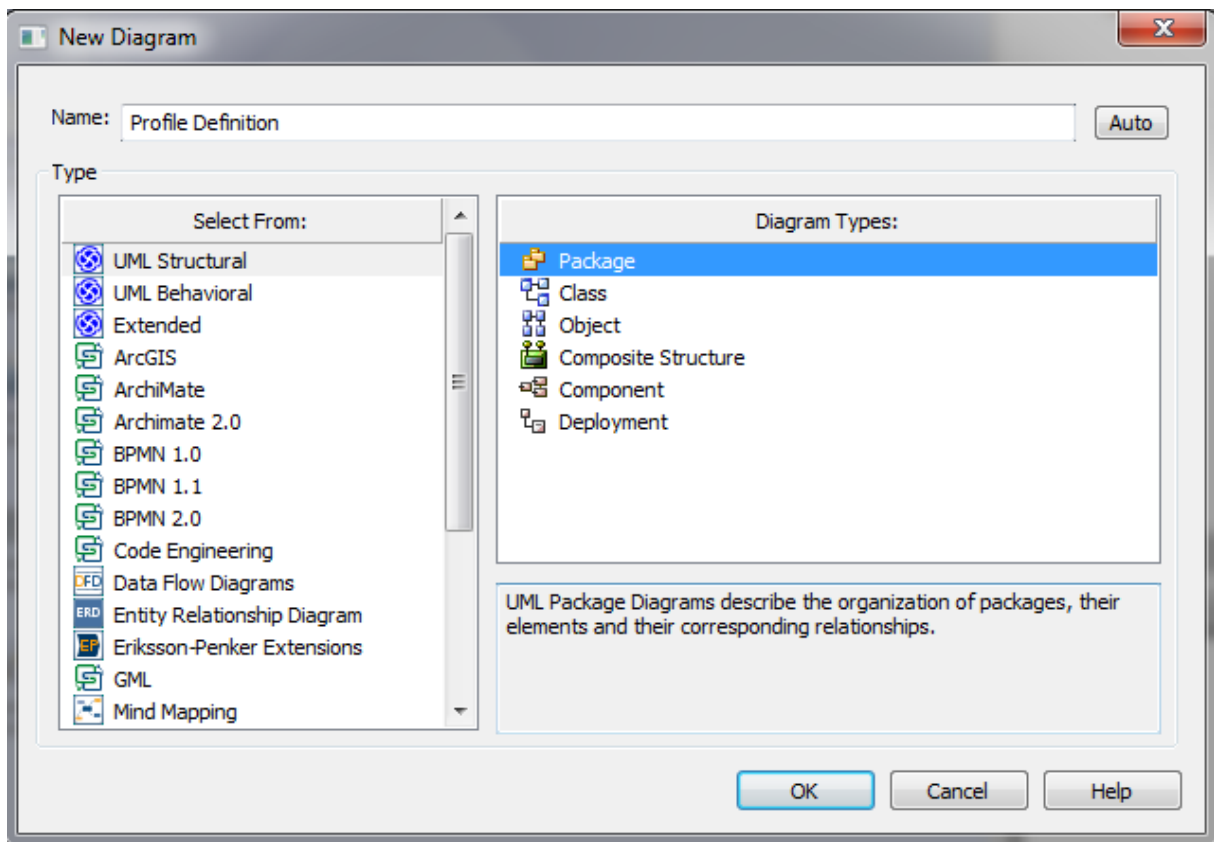


Figure 7. Selection type of diagram in the Profile Definition.

In the Project Browser now you see the new project with a view and the package 'Profile Definition'. See figure 8.

In '5CreateUMLmodelNewFP.pdf' in chapter 'Creation', there is a description of how to create a UML diagram for the Profile Definition. This diagram can only be created after loading the Base Model and the creation of the package for the new Functional Profile. So load the Base Model and create a package for the new functional first.

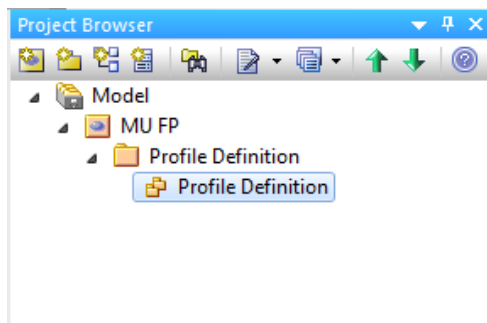


Figure 8. New project with view and package Profile Definition.



Now we will finish the package for the Profile Definition.

- Open the Properties for the package Profile Definition (double click on the package) and select the follow stereotype in the Stereotype field: HL7-FM-ProfileDefinition. Now you can click on the Properties window (on top of the window) and drag this next to the notes underneath the Project Browser.
- Or go directly to the Properties underneath the Project Browser. See figure 9.

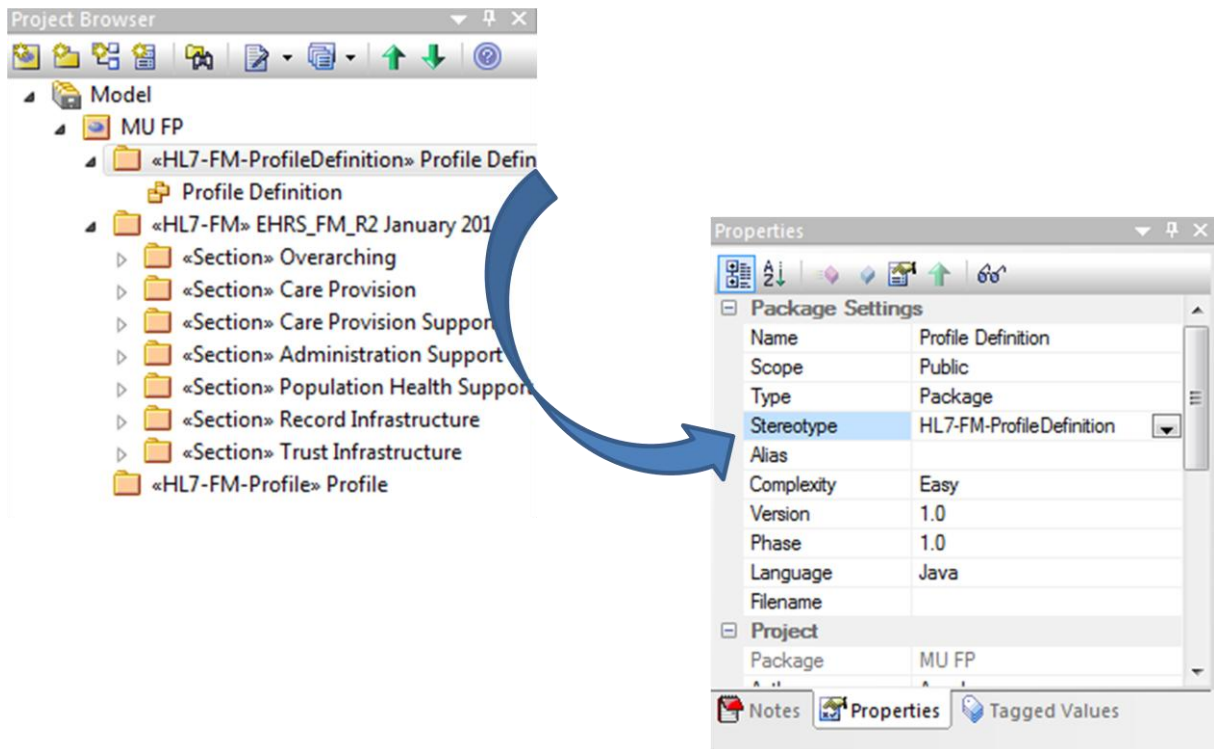


Figure 9. Properties of Profile Definition.

- Open the Tagged Values and create the File Path for the Profile Definition. See figure 10. Close after choosing the file path. This in the Tagged Value MAX::ExportFile.



- It is possible that you have to create this Tagged Value.

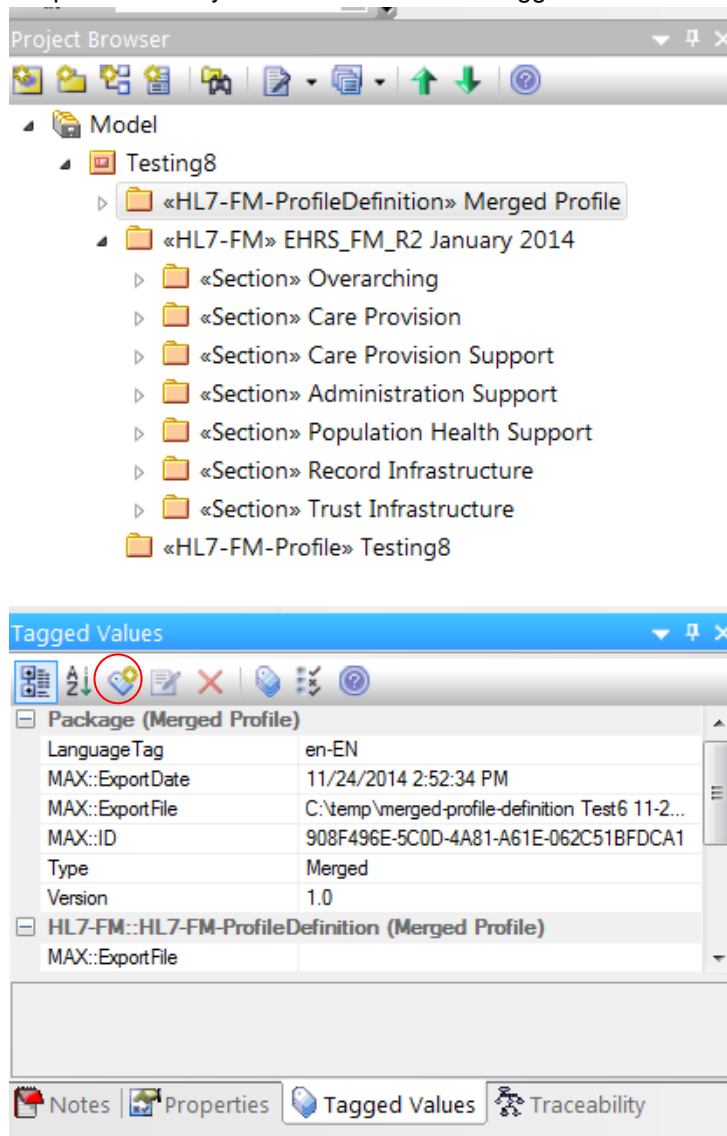


Figure 10. Creation of File Path Profile Definition.

- Click on the icon in the Tagged Values window, see figure 10, in the red circle.
- In the window enter the Tagged Value as shown in figure 10.
- Enter also the file path and click OK. The file path can be changed after you clicked OK.
- However, the Tagged value cannot be changed after clicked OK. If you made a mistake, delete the Tagged Value and start again.

Now you can load the Base Model.

Go to the chapter '2LoadBaseModel.pdf' in chapter 'Creation'.