

Care Plan and Related Resources

Version 0.2

2015.09.23

DeviceUseRequest	

DiagnosticOrder	

Appointment	

Encounter	

Location	

Condition	

EpisodeofCare	

Organization	

Goal	

Group	

ProcedureRequest	

CarePlan	

MedicationOrder	

ProcessRequest	

ReferralRequest	

NutritionOrder	

Substance	

RelatedPerson	

Order	

CommunicationRequest	

VisionPrescription	

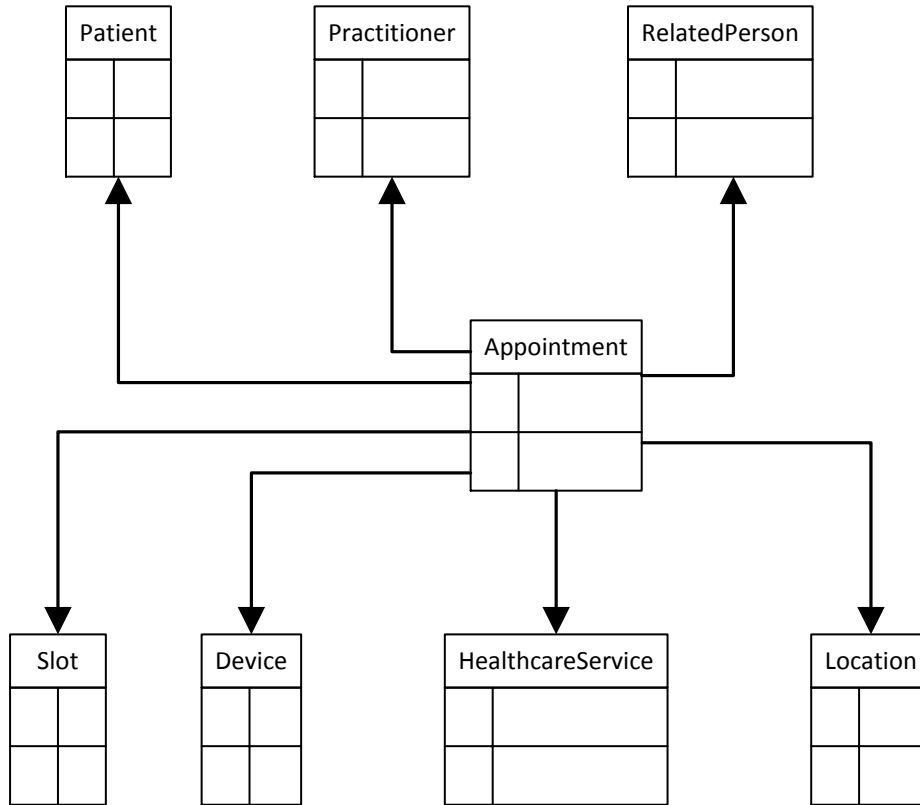
Patient	

Practitioner	

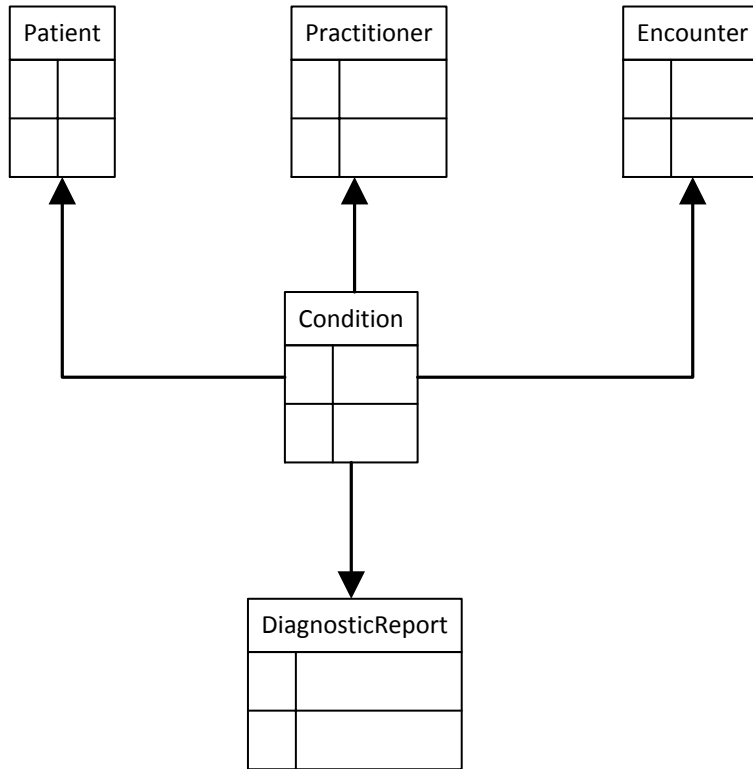
SupplyRequest	

All these resources are referenced by the FHIR Care Plan Resource

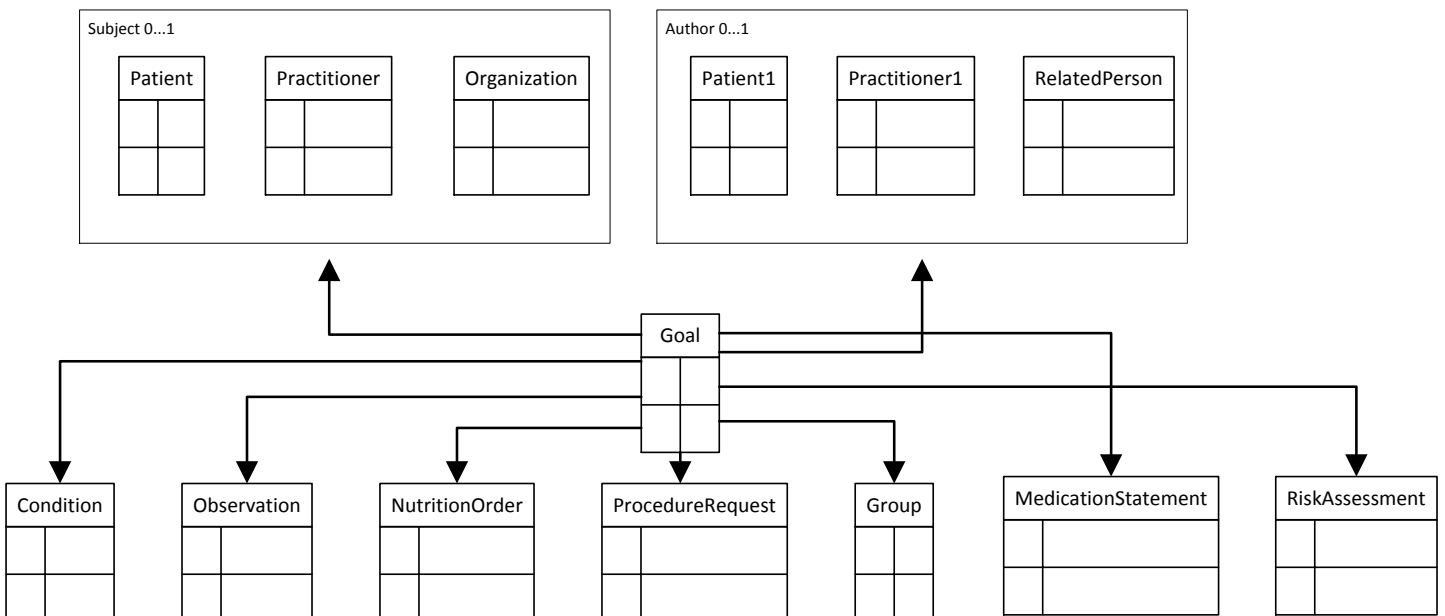
Appointment Resource



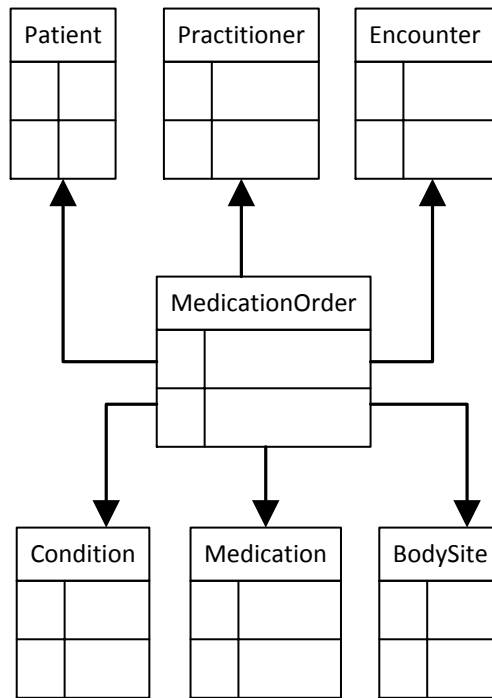
Condition Resource



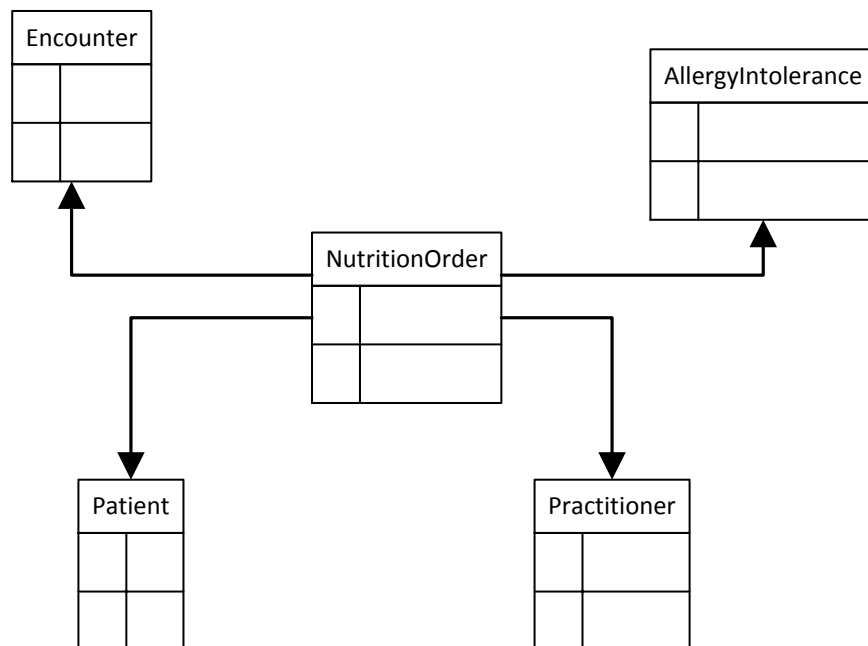
Goal Resource



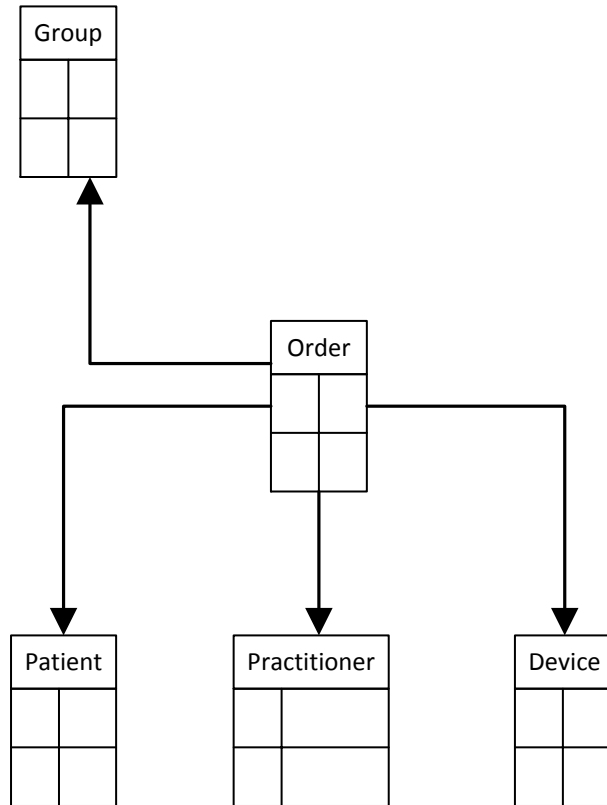
MedicationOrder Resource



NutritionOrder Resource



Order Resource

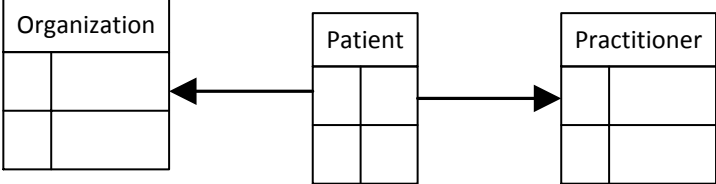


Boundaries and Relationships

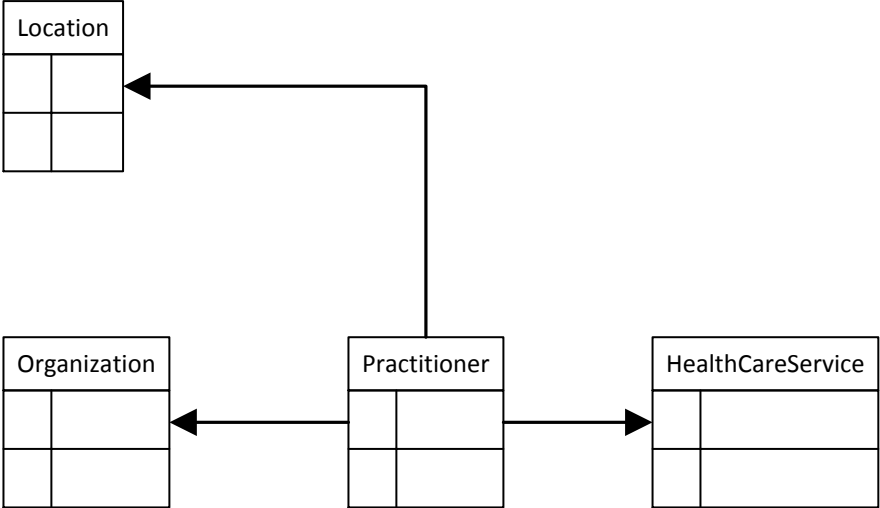
As described above, the split between the Order resource and the domain order resources is that Order is a workflow resource, not a clinical resource. It is used to manage fulfillment requests and other state transitions for the 'real' clinical orders - DeviceUseRequest, DiagnosticOrder, MedicationOrder, NutritionOrder and ProcedureRequest.

This resource is referenced by CarePlan, ClinicalImpression and OrderResponse

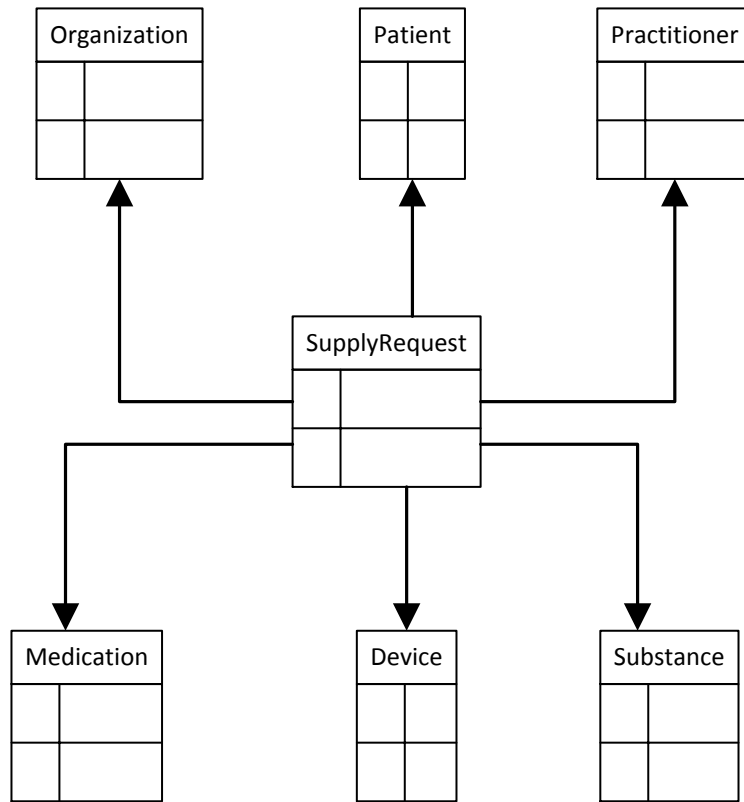
Patient Resource



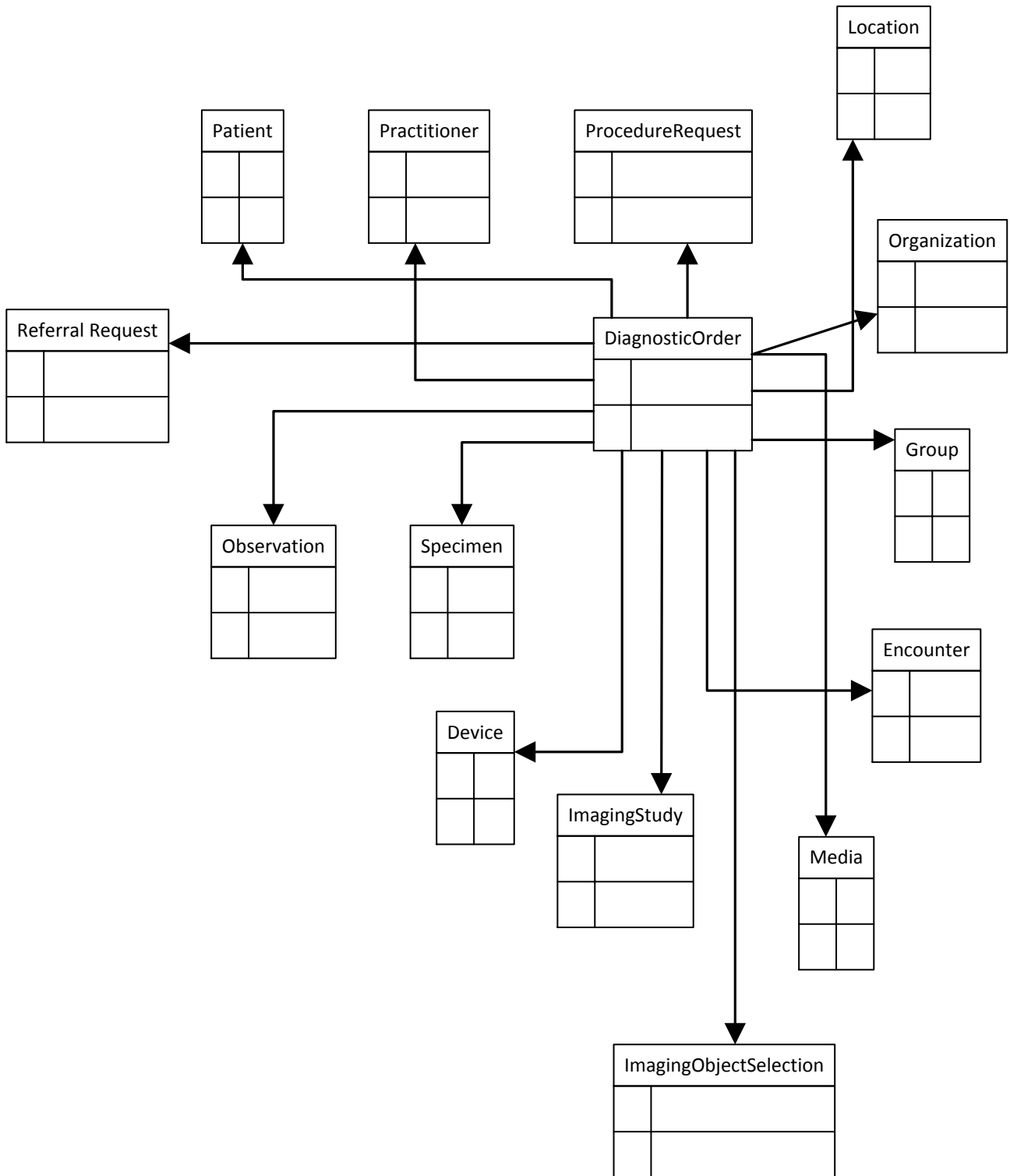
Practitioner Resource



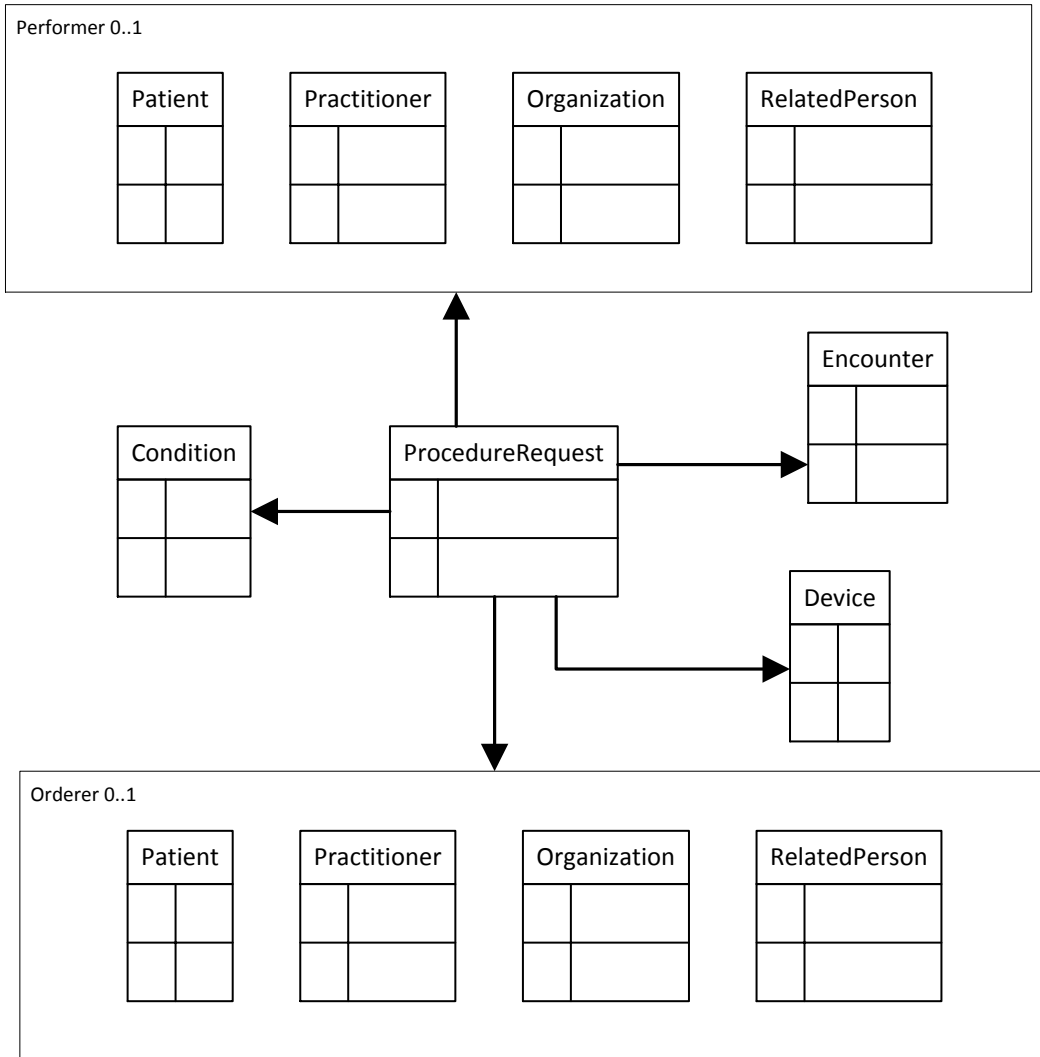
SupplyRequest Resource



DiagnosticOrder



ProcedureRequest



ReferralRequest

