



## Read the EHR-S FM

To read the EHR-S FM in Enterprise Architect you have to open the content (function list) of the EHR-S FM, in a format that EA can read, so called .eap file.

Another way to get the content of EHR-S FM in EA is the import of the MAX file of EHR-S FM.

Contact the EHR WG co-chairs for obtaining these files. Save the files on your local drive.

For reading the EHR-S FM you don't need the MAX file. But if you are going to create a Functional Profile, you will need this MAX file. How to import this MAX file into EA is described in the Installation user guide.

So we will only describe how to open the .eap file.

There are several ways to open the .eap file.

1. **Open Enterprise Architect.** You will get the Start Page of EA. See below.

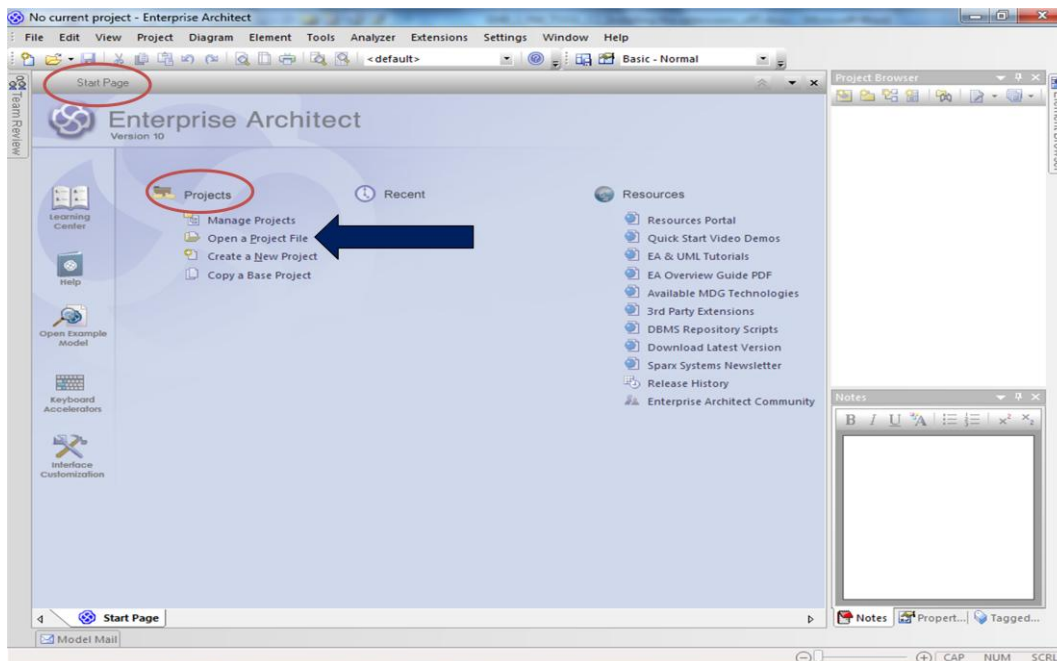


Figure 1. Start page of Enterprise Architect.

- To get more explanation on the Start Page of EA you can watch the video on YouTube, <http://www.youtube.com/watch?v=PK6rcXTb84Q>. Note: This is not a video from Sparx, but gives a good explanation of the Start Page.

- To open the .eap file on your computer go to Projects and choose Open a Project file. The Windows Explorer will open. Go to the folder where you saved the .eap file, click on that file and

HL7® EHR Standard, © 2014 Health Level Seven®, Inc. ALL RIGHTS RESERVED. The reproduction of this material in any form is strictly forbidden without the written permission of the publisher.

HL7 and Health Level Seven are registered trademarks of Health Level Seven, Inc. Reg. U.S. Pat & TM Off



click on 'open'. You will see the package in the project browser of EA under 'Recent' on the Start Page of EA. See figure 2.

2. **Open Windows Explorer** and look for the folder where you copied the file to. Double click on the file and Enterprise Architect will start. You will see the EHR-S FM under Recent on the Start page of EA. In the Project Browser you see the EHR-S FM. See figure 2.

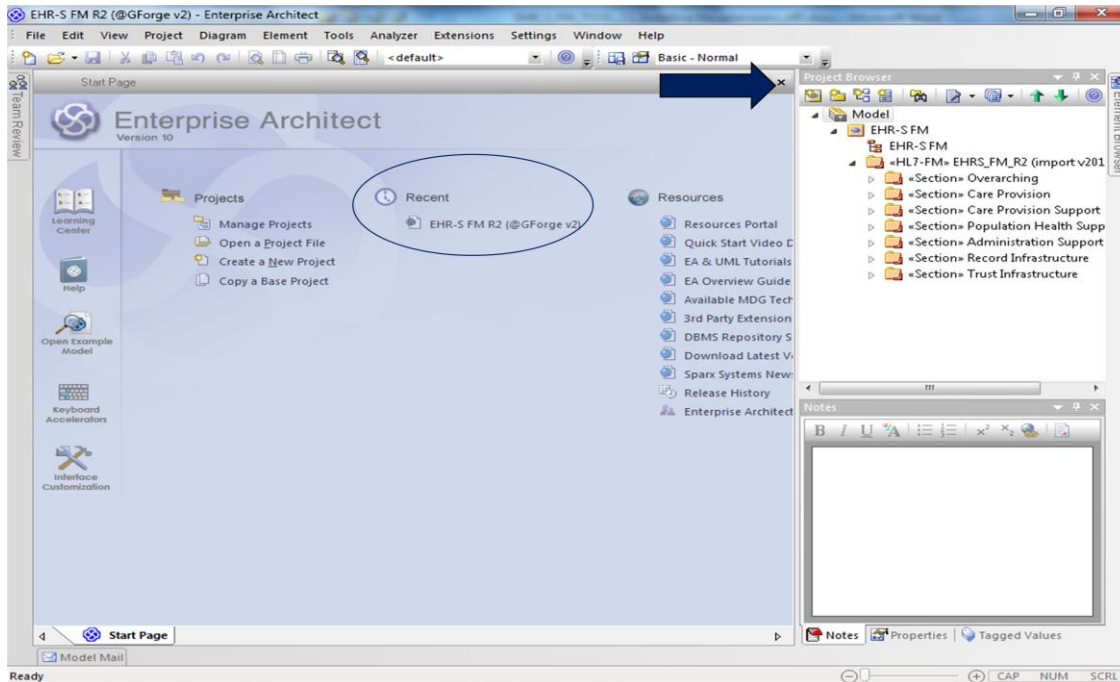


Figure 2. Recent projects on the Start Page of Enterprise Architect.

The project browser of Enterprise Architect will show the model. See figure 2.

- To see the content of EHR-S FM open the Model in the Project Browser. See figure 3.

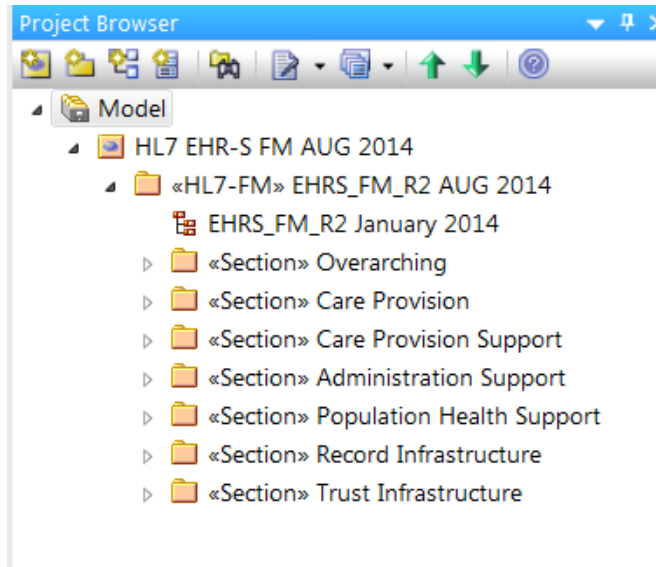


Figure 3. The content of EHR-S FM in EA.

- Now you can browse through the content of the EHR-S FM by clicking on a section, then a header, then a function. You will see the conformance criteria belonging to a function.

Every element in the EHR-S FM has some features. In EA you can see these features in the Notes, Properties or Tagged Values. These fields you can find right under the Project browser. See figure 4.

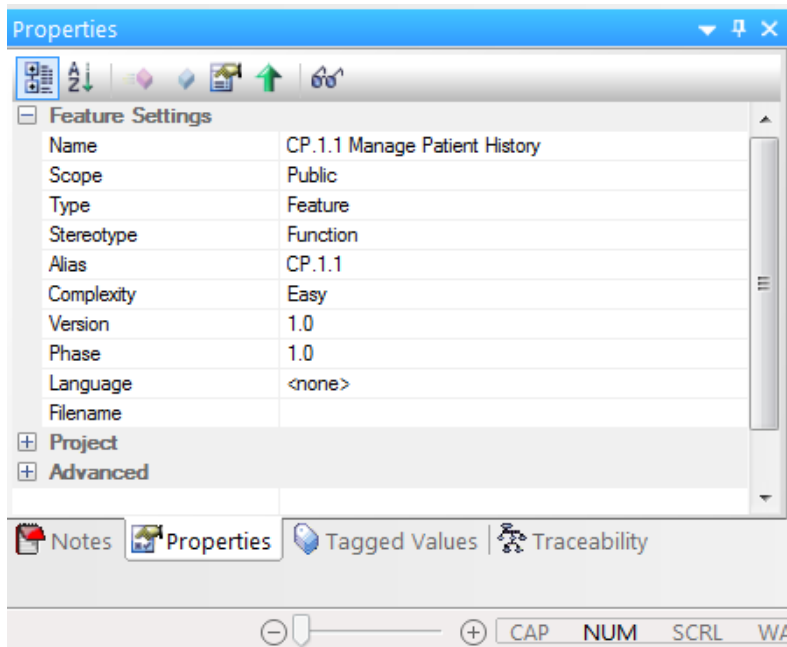


Figure 4. Project Browser, Notes, Properties and Tagged Values.

In figure 4 you also see the Traceability view. How to open this view is described in the user guide 'TraceabilityElements.pdf' in Section 'Browse the EHR-S FM'.



- Select a header, section, function or criterion you want to see. For example «Function» CP.1.1 Manage Patient History. If you select the Tagged Values, you will see that for this function. See figure 5.

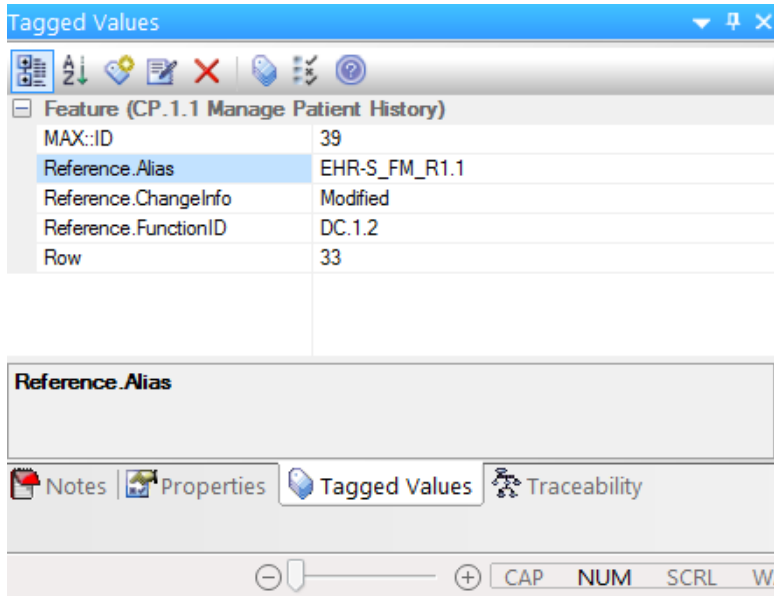


Figure 5. Tagged Values for the selected element.

Here you see the reference to the EHR-S FM R1.1, Reference.Alias, and a reference to the function in R1.1, Reference.FunctionID. In the Reference.ChangelInfo you see that the function was modified in Release 2. The Tagged value 'Row' gives the original row number in the spreadsheet of the EHR-S FM R2. Note, that if the row number is 0, the element didn't exist in the concept version of the EHR-S FM R2. This element was added using EA and not using the spreadsheet.

- The same for the field Notes. See figure 6.

In the notes you see the text of the selected element. In this case the text of «Function» CP.1.1 Manage Patient History. You see the statement (\$ST\$), description (\$DE\$ and if there an example (\$EX\$). The characters between brackets are necessary to distinguish the EHR-S Function List Components (see the standard paragraph 4.3).

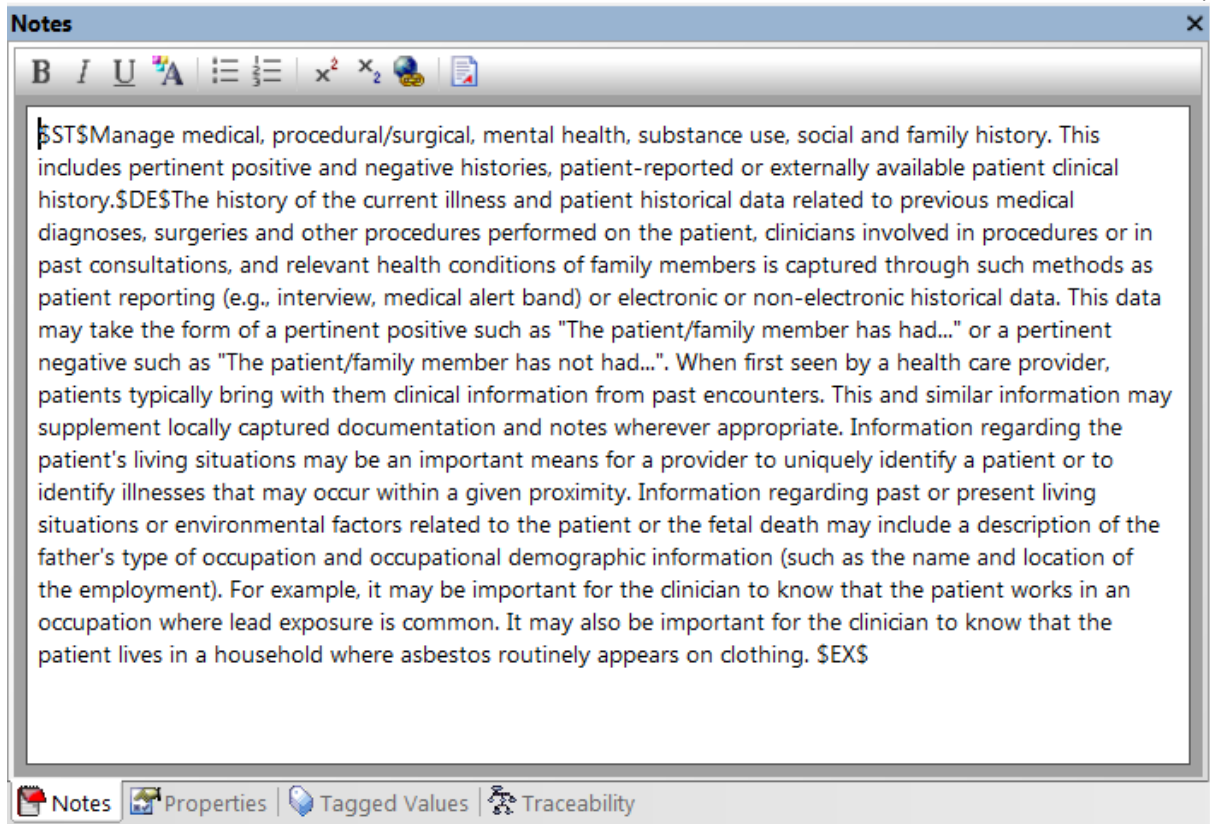


Figure 6. Notes for the selected element.