



Create package for (compiled) Functional Profile

The third step is the creation of a package for the new Functional Profile.

Note: This step can be done **after** you:

- Created a new project in Enterprise Architect, EA, see in chapter 'Creation' the user guide '1CreateNewProfile.pdf'.
- Loaded the Base Model in the project, see in chapter 'Creation' the user guide

Note: And **before** you:

- Create the UML diagram for the Profile Definition, see in chapter 'Creation' the user guide '5CreateUMLmodelNewFP.pdf'.

NOTE: be sure that you have installed the latest version of the extension before you are going to develop a new functional profile! Contact the EHR WG co-chairs to obtain the extension. Name of the extension is 'HL7_FM_EA_Extension jjjjmdd'. Check on a regularly base if a new version is available!

Creation of a package for the new Functional Profile:

- In the View you need to create a Package for the new (compiled) Functional Profile. The new (compiled) Functional Profile is based on the Profile Definition.
- Right click on the package 'View' and select 'Add' and then 'Add package'. See figure 1.

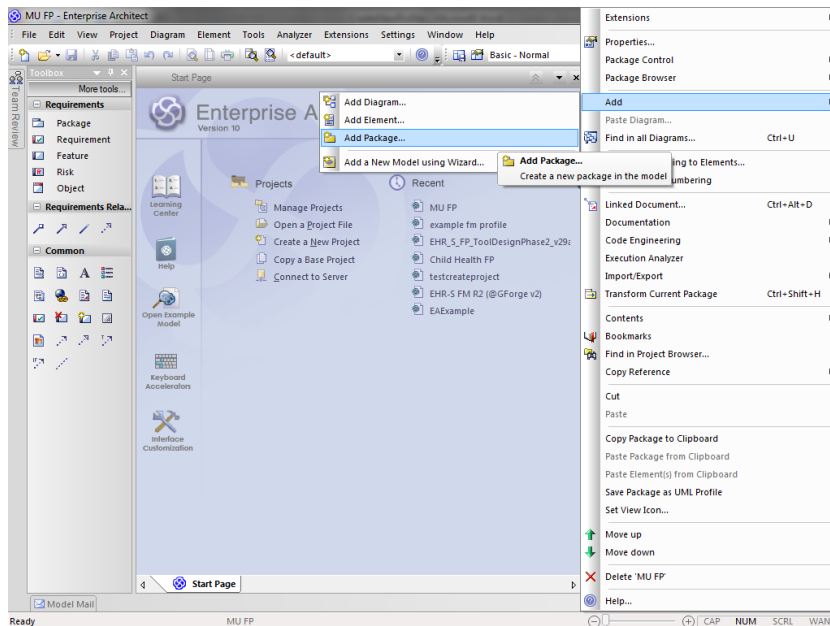


Figure 1. Adding a package to the 'View' of the new project.



- Give the package the name 'Profile' in the Name field. See figure 2.
- Don't select a diagram. So the boxes are empty. See figure 2.

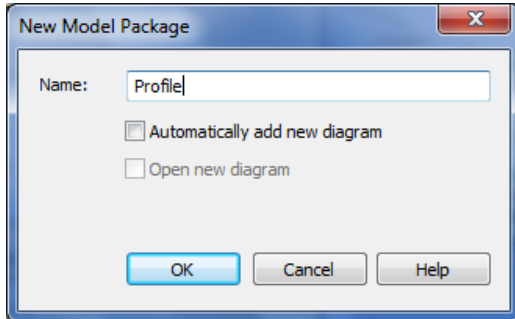


Figure 2. Giving the new package a name.

In the Project Browser now you see the package 'Profile'. See figure 3.

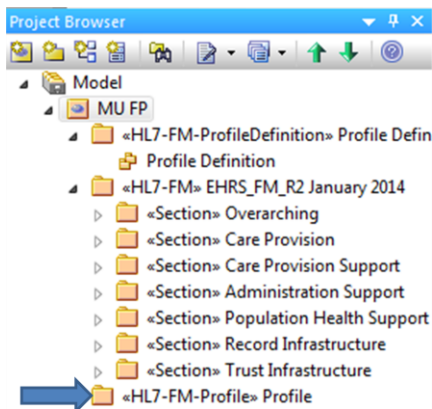


Figure 3. The third package 'Profile' in the new project.

- Open the Properties for the package 'Profile' and select the stereotype in the Stereotype field: HL7-FM-Profile. Or go to the Properties underneath the Project Browser. See figure 4.

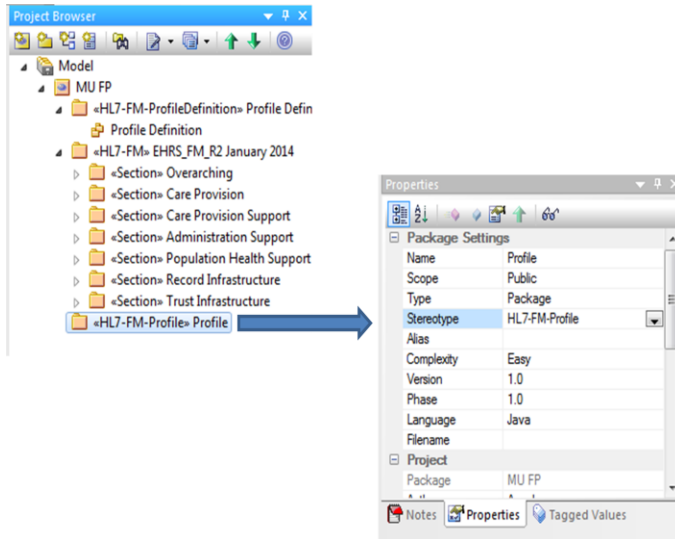


Figure 4. Properties of package 'Profile'.

- Open the Tagged Values to include the File Path for both the MAX Import and Export File.
- This is done in the same way as including the file path for the other packages. See description in chapter 'Creation' the user guide '1CreateNewProfile.pdf'.

Now you can create the diagram for the Profile Definition.

Go to chapter 'Creation' and see for the user guide '5CreateUMLmodelNewFP.pdf'.