



## Search the EHR-S FM

The EHR-S FM is a comprehensive standard, in particular the function list. If you are looking for certain functions it can be difficult to find them in the function list. EA can help you on this by using the search functionality.

Search the EHR-S FM in EA, called 'Search in Model', can be done as follows:

- Open the .eap file of the EHR-S FM as shown in figure 1.

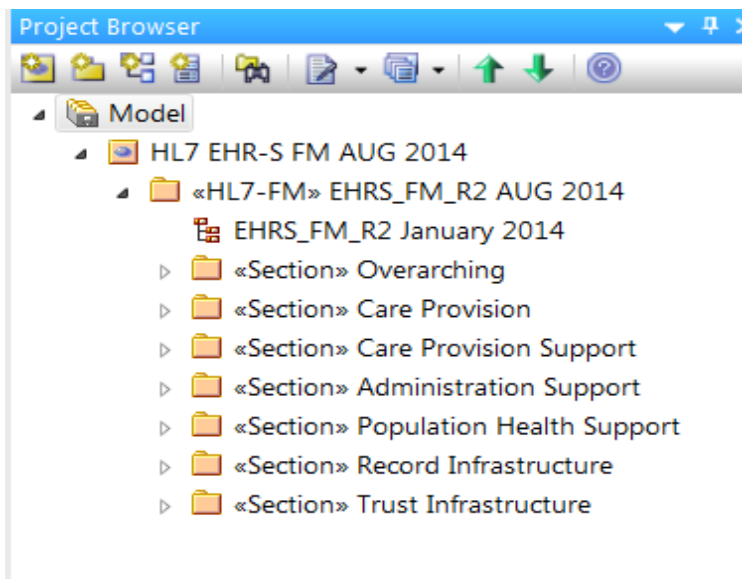


Figure 1. The EHR-S FM in EA.

- It is not relevant to select a certain level in the model. Because we are going to use the functionality 'Search in Model', EA will search in the current project the EHR-S FM.
- Go to 'Edit' in the navigation of EA, and choose 'Search in Model'.
- Or press ctrl F.
- You will get a screen as shown in figure 2. Know you can search the EHR-S FM by putting a keyword in the field 'Search Term'. For example 'Allergy' as shown in figure 2.

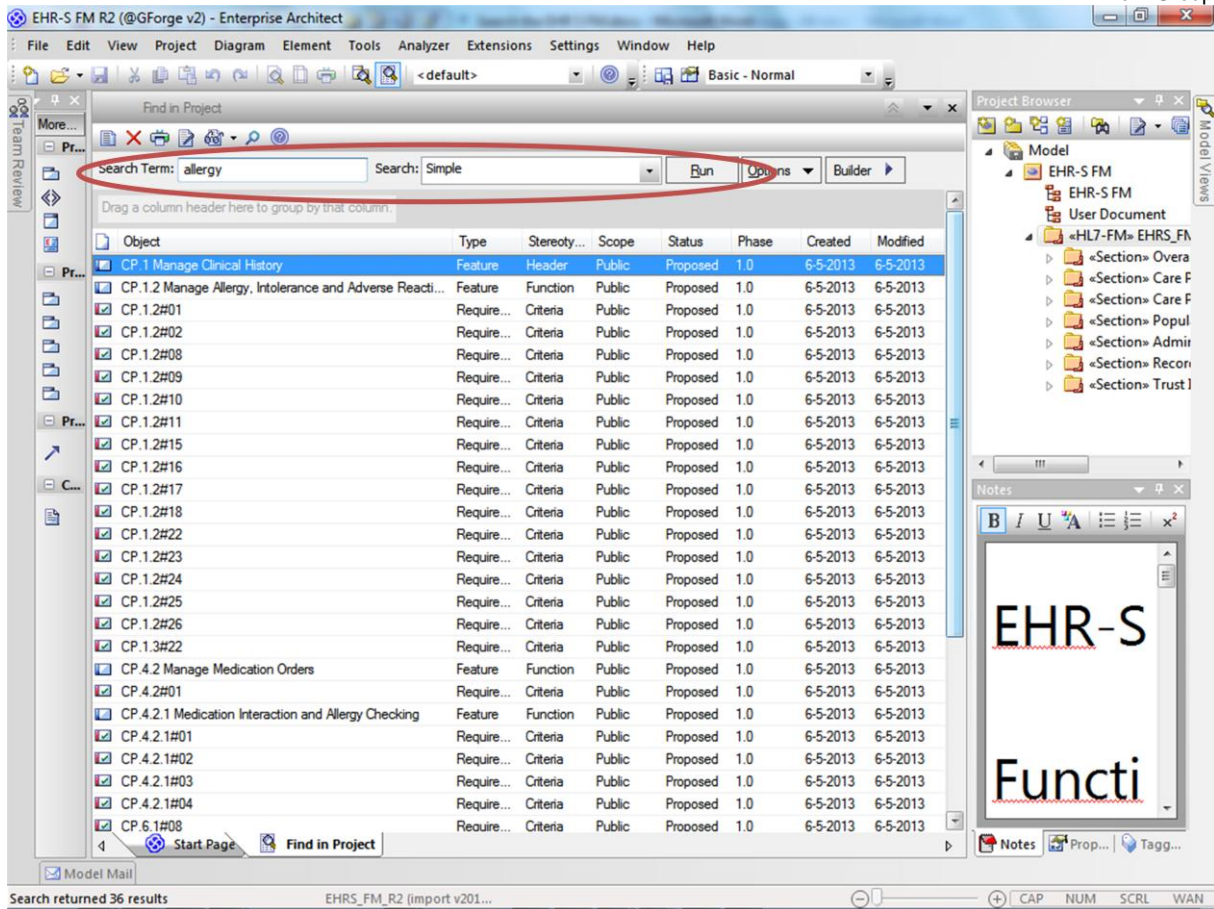


Figure 2. The use of the search functionality in EA.

- When you do a 'Simple' search, as shown in the field 'Search', EA will give you an overview of all the EHR-S FM components in where the term 'Allergy' is used.
- Figure 2. The results of a search example for 'Allergy'.
- Double click on one of the results, e.g. CP.1.2#01, and you will get the properties of that that element. In this way you can easily review the properties of an element.
- In the navigation of the results window, 'System Output', you see an icon of a document with small glasses. When you click on this you get the follow options (figure 3):
  - Hide notes: the view you see in figure 3, without showing the text in the notes.
  - Notes Preview: you will see a part of the text in the notes.
  - Full notes: you will see all the text in the notes. The full text that comes with the elements is shown now (figure 4).

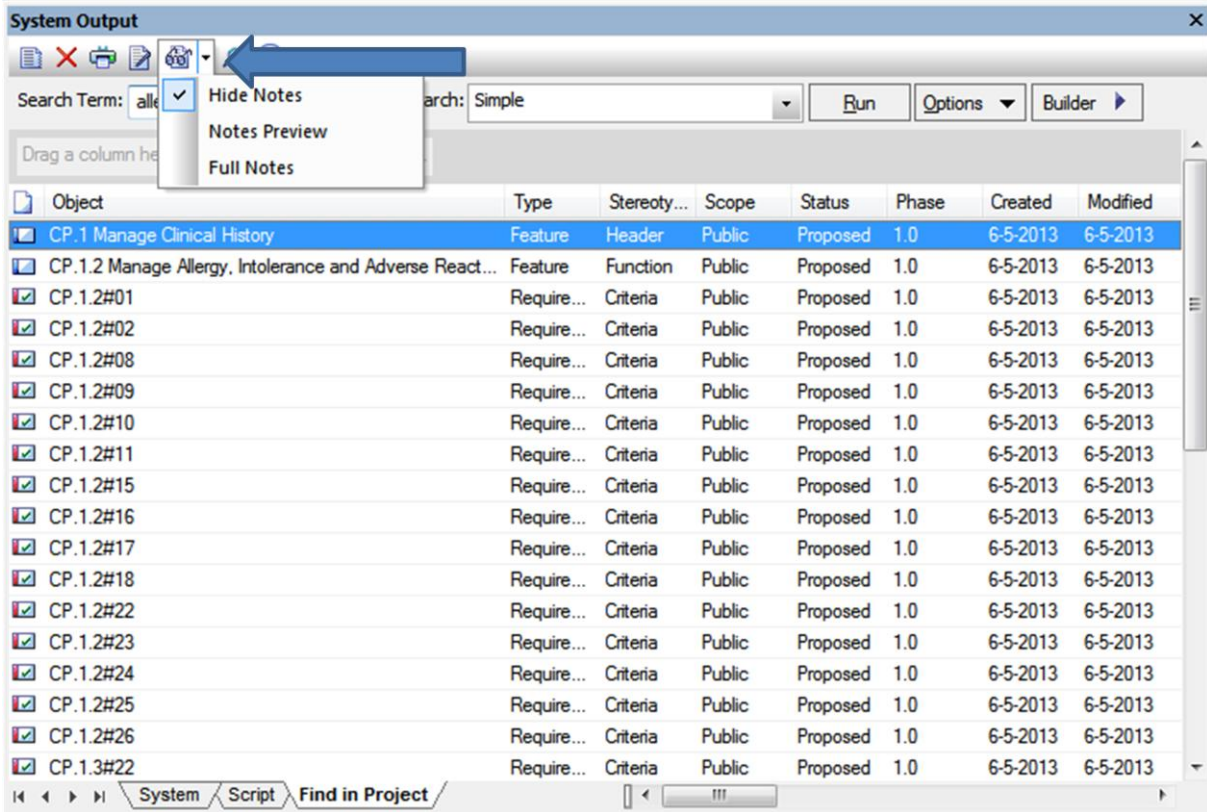


Figure 3. Results window with the option to see notes.

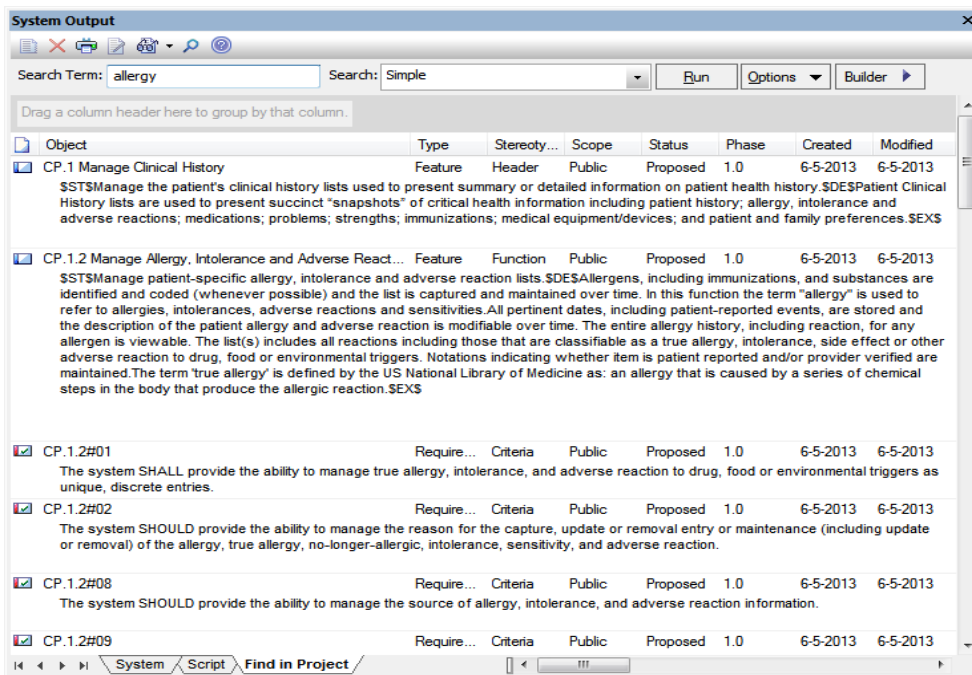


Figure 4. Results window with Full Notes.



- You can export the search result, or a selected part of it, See next paragraph.
- If you want to do a search for a group of elements, for example all the criteria in the section Record Infrastructure with a SHOULD and MAY, you need to follow the following steps:
  - Click on the package of the section you want to search, in this case Record Infrastructure.Record. Then 'Find in Project'.
  - Leave the field Search Term empty.
  - In the Search window, figure 2, you can choose for a simple search, but you can also choose for the option 'Find Non SHALL'. The results are only those elements from the EHR-S FM with the SHOULD and MAY criteria.

For more explanation, see the Help in EA, Model Search.

## Export search results

To export the search results follow the next steps:

- Select the results in the search window which you want to export. If you want all the results use ctrl A.
- Right click, select Documentation, and select RTF Report on selected elements. See figure 5.

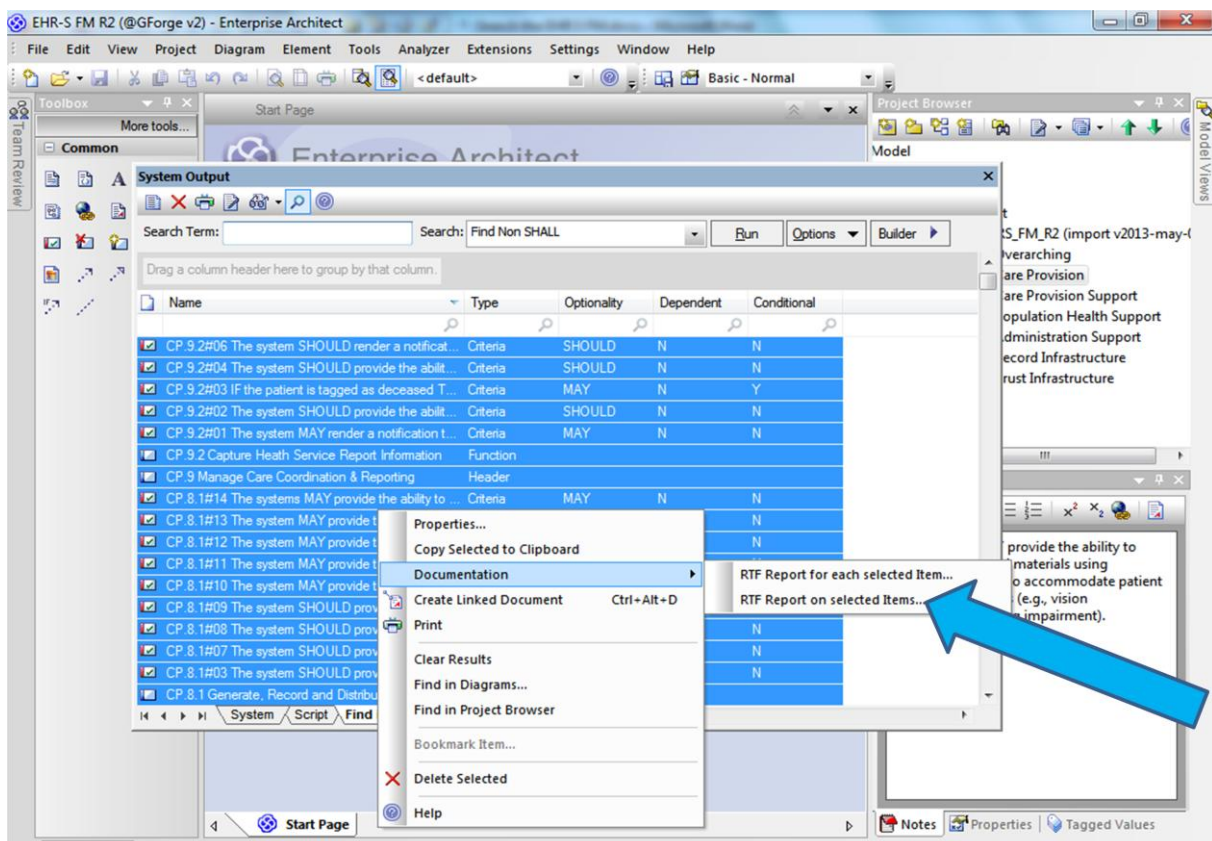


Figure 5. Export search results to a RTF Report.



- You will get a dialogue where you can select the template for the export.
- Select the Template 'Basic FM Export Table template' See figure 6.

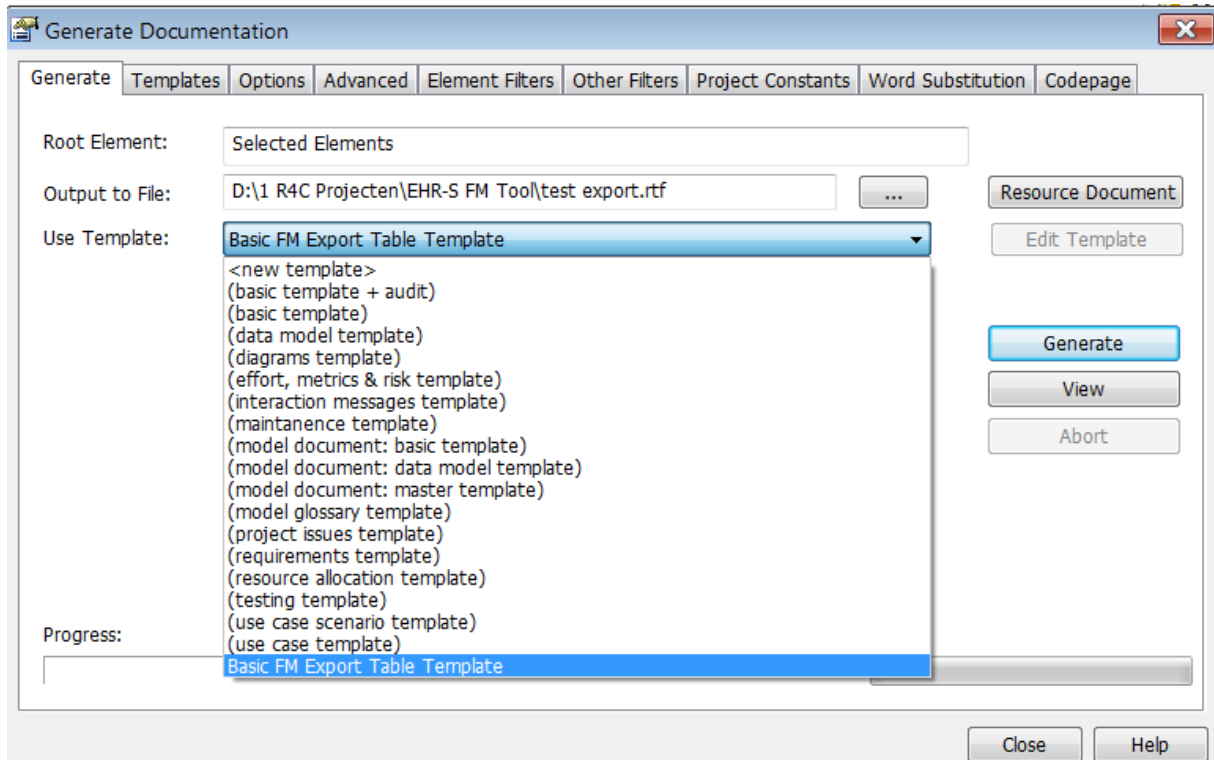


Figure 6. Template selection for the RTF Report.

If you are doing this for the first time, you probably don't have this template. You need to import the template first. The name of the template is 'Basic FM Export Table Template.rtf'. How to import is described in the Help of EA 'Import an RTF Template'.

If you want to define a new template for a RTF document, this is also possible. How to do this is described in the Help of EA 'Design Custom RTF Templates'.