



Load a Base Model for creation of a new Functional profile

The first rule for Functional Profiles is the identification of the Functional Model or Functional Profile¹ from which you want to derive the new Functional Profile. This is the so called 'Base Model'. To do so you have to select the FM or FP for that and load the FM or FP into Enterprise Architect². To do so you will need the MAX file of that FM or FP. Be sure that you use the latest version of the MAX file! Ask the EHR WG co-chairs for the file.

To load the Base Model:

- Select the project in where you want to have the Base Model.
- Select the 'View' package. You created this before when you created a new project in EA for the creation of your functional profile (1CreateNewProfile.pdf).
- Click right and select Extensions as shown in figure 1.
- Select HL7 FM.

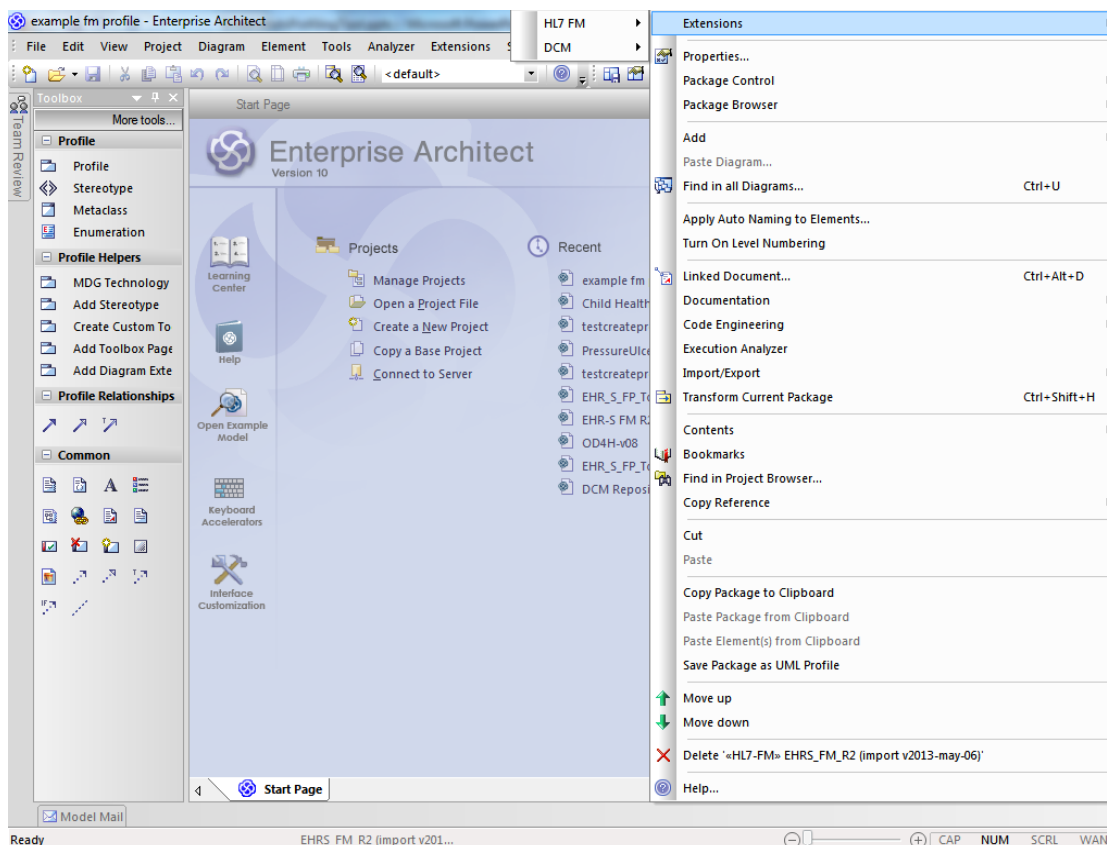


Figure 1. Load Base Model by using the Extension functionalities.

- Now select the Quick Access Tab. See figure 2.

¹ At this moment, September 2014, you can only derive a functional profile from the EHR-S FM R2.

² This is only possible for Functional profiles based on the EHR-S FM Release 2.

HL7® EHR Standard, © 2014 Health Level Seven®, Inc. ALL RIGHTS RESERVED. The reproduction of this material in any form is strictly forbidden without the written permission of the publisher.

HL7 and Health Level Seven are registered trademarks of Health Level Seven, Inc. Reg. U.S. Pat & TM Off

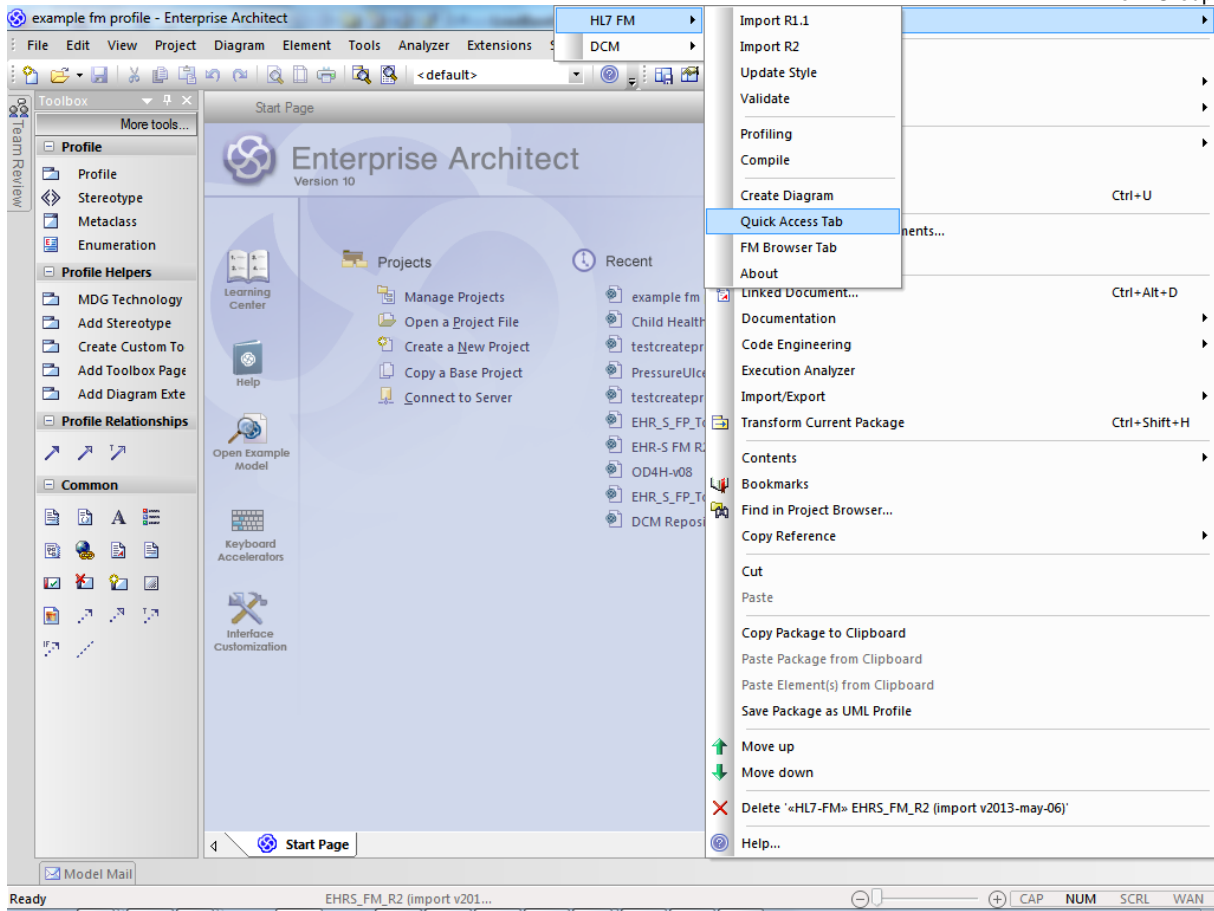


Figure 2. The Quick Access Tab in the HL7 FM Extension.

The result is shown in figure 3.



Figure 3. Quick Access Tab in the HL7 FM Extension.



Now you can import the EHR-S FM or an existing Functional Profile (not in this stage of the tool development September 2014) by selecting the option in the Quick Access Tab. We will import the EHR-S FM for our example. For this we use the MAX file of the EHR-S FM. Follow the next steps.

- Select 'Import MAX' in the Quick Access Tab.
- Look for the MAX file in the Windows Explorer. When you click OK, EA will load the FM as the Base Model. This will take a couple of minutes.
- In the 'View' package you will see a second package (beside the package with the Profile Definition) with the Base Model. See figure 4.

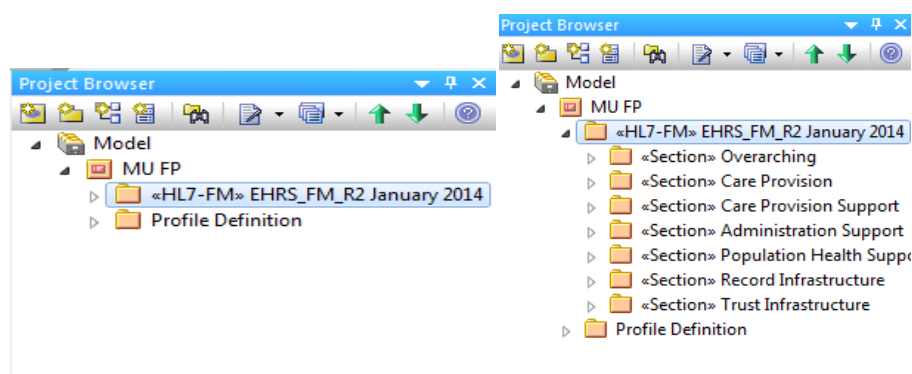


Figure 4. Project Browser with Profile Definition and the Base Model.

- Open the Tagged Values and select the file Path of the Base Model. See figure 5.
- To add a new Tagged Value see description in '1CreateNewProfile.pdf'.

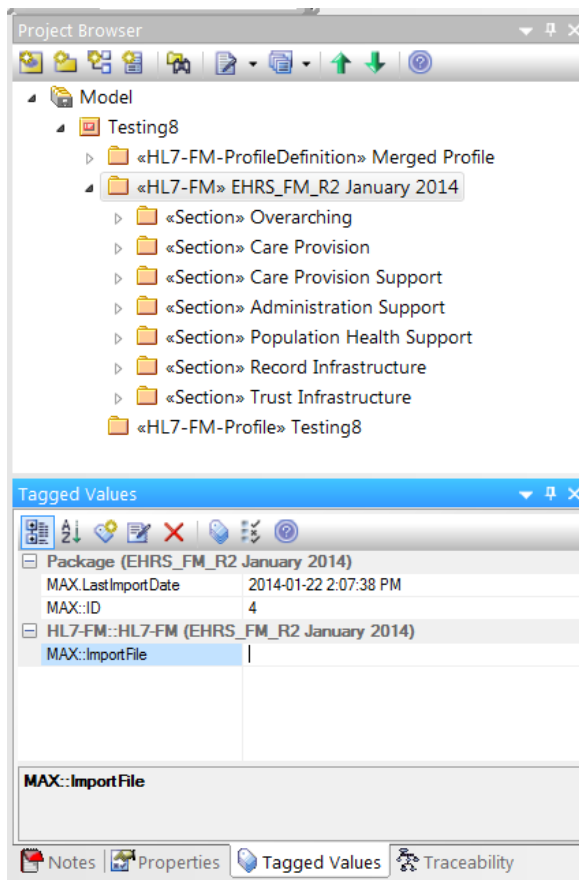


Figure 5. Including the File Path of the MAX Import File of the Base Model.

From this Base Model you define the new Functional Profile. See chapter '6CreateProfileDefinition.pdf' in chapter 'Creation'.