



## Create the Compiled Profile

The base for the new Functional Profile is the Profile Definition. If you don't have done that, go and create the Profile Definition first.

To create the compiled profile:

- Right click on the package 'Profile Definition'.
- Select Extension, select HL7 FM.
- Select 'Compile Profile' from the list. See figure 1.

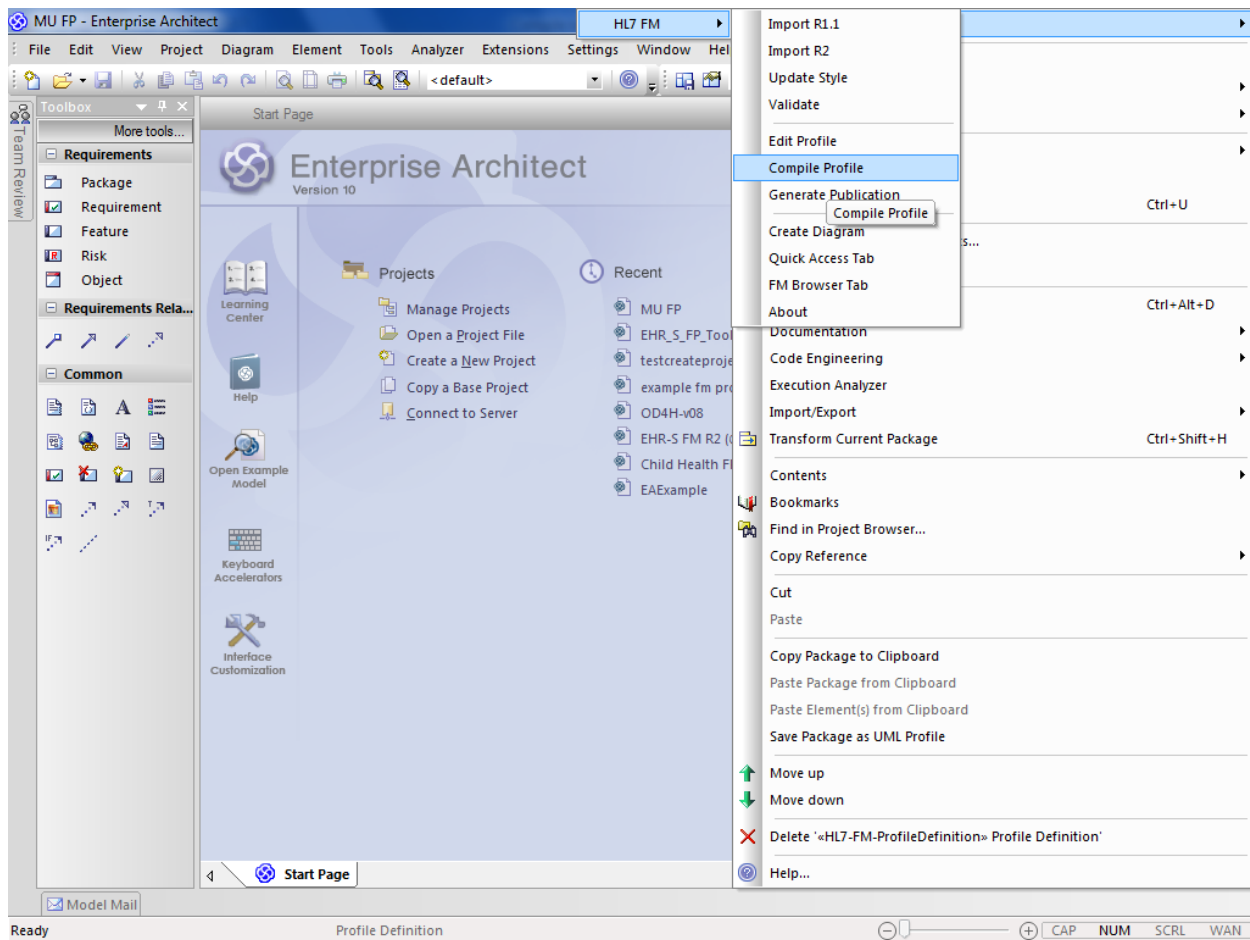


Figure 1. Compile Profile.

The result is a MAX file in the folder in where you wanted to save the compiled profile. You defined this in the Tagged Values of the package of the Profile Definition, as MAX::ExportFile.



- Copy the file and change the file name by adding the date on which you compiled the profile. This is important because in the process of developing a new Functional Profile and the ballot of that Profile, you need to update the Profile Definition and compile the Profile again. In this way you keep track of the history.
- You can now import this file into EA.
- Select the package «HL7-FM-Profile» for the compiled profile.
- Right click, select Extensions, Select Quick Access tab. See figure 2.

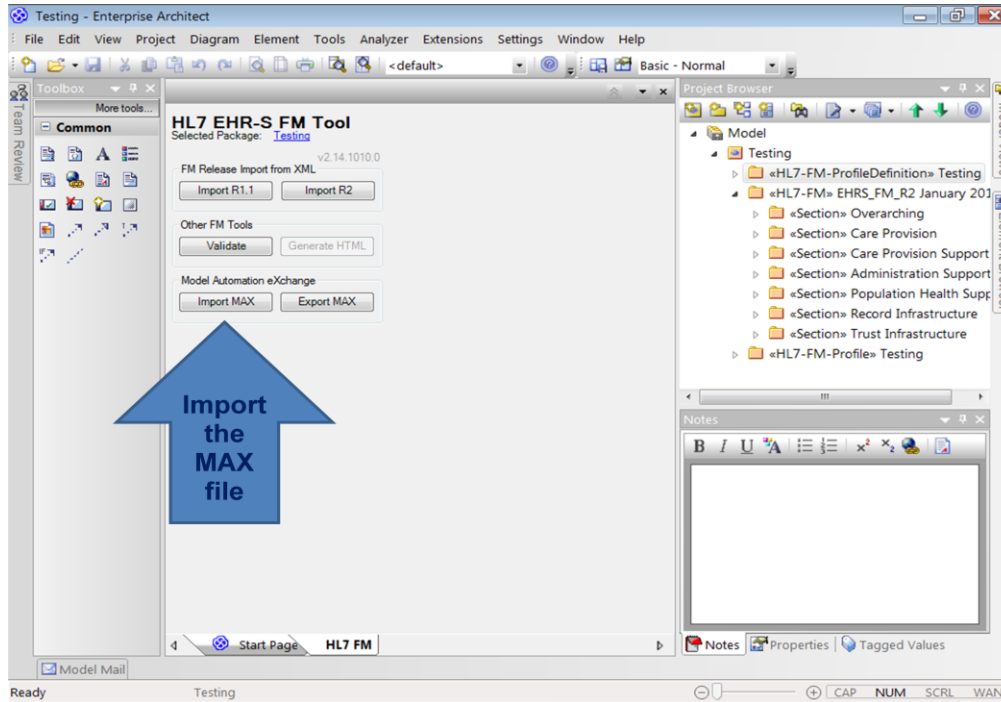


Figure 2. The Quick Access tab of the tool.

- Select 'Import MAX'.
- Select the max file from the Windows Explorer and click OK.

EA will now import the Compiled Profile in the package «HL7-FM-Profile». This will take a couple of minutes. The result is shown in figure 3.

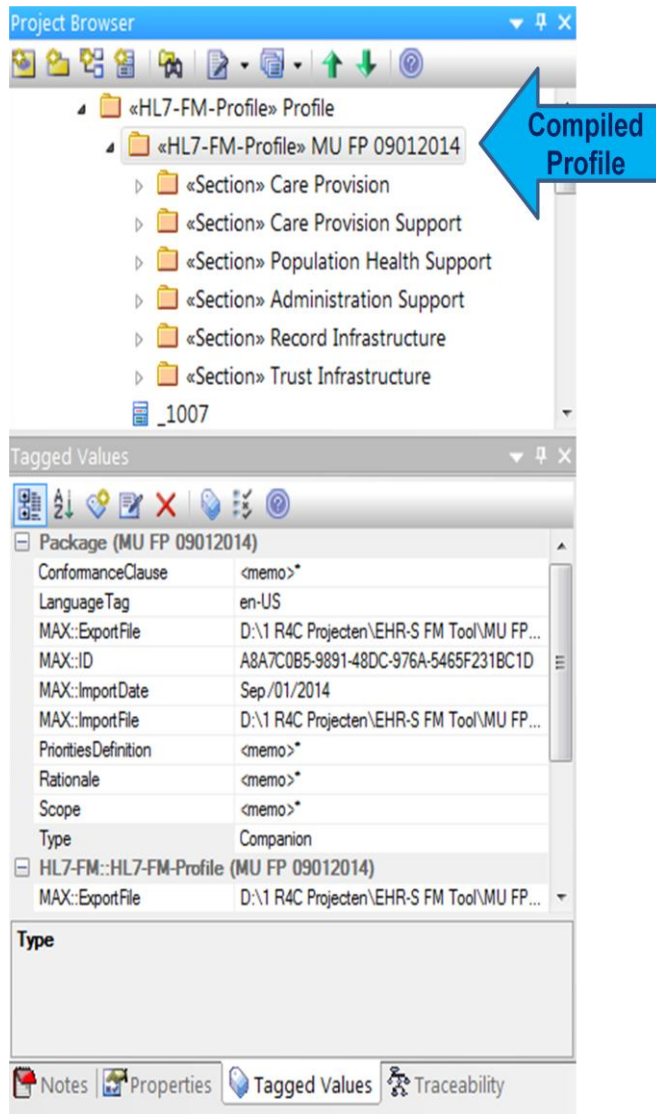


Figure 3. The new Functional Profile.

- When you select the (wrong) package 'Profile', if you want to compile the Functional Profile, you will get the message as shown in figure 4.

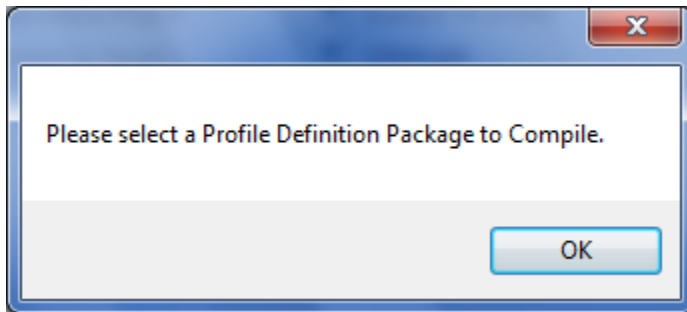


Figure 4. Message when selecting a wrong package.

NOTE: If you import the MAX file of the Compiled Profile multiple times in the process of profile creation, delete the Compiled Profile in EA by right click on the Compiled Profile and Delete. Include also the individual classes with the numbers. See figure 5. If you don't do that the .eap file of you project gets to large!

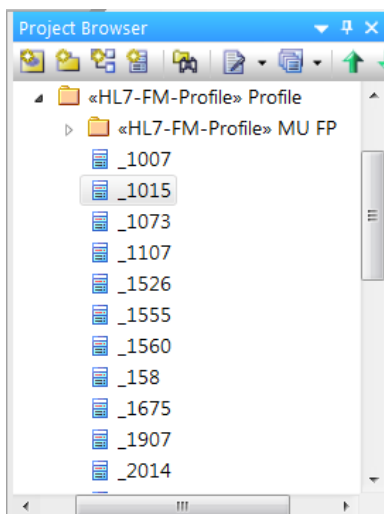


Figure 5. The Compiled Profile with individual classes.

**Important:**

- When you created the Compiled Profile add the date of creation to the filename. In this way you can save this file over time when compiling the Functional Profile again later in the process of creating a Functional Profile.
- Before you import a new Compiled Profile in EA, remove the older version of the Compiled Profile. Otherwise the .eap file will become very large and will be damaged.
- If this occurs, you can repair the .eap file.
- Select 'Project' in the top navigation, select 'Data Management' and select Manage .eap file. See figure 6.
- Now select 'Repair .eap file. EA will repair the .eap file for you.

HL7® EHR Standard, © 2014 Health Level Seven®, Inc. ALL RIGHTS RESERVED. The reproduction of this material in any form is strictly forbidden without the written permission of the publisher.  
HL7 and Health Level Seven are registered trademarks of Health Level Seven, Inc. Reg. U.S. Pat & TM Off

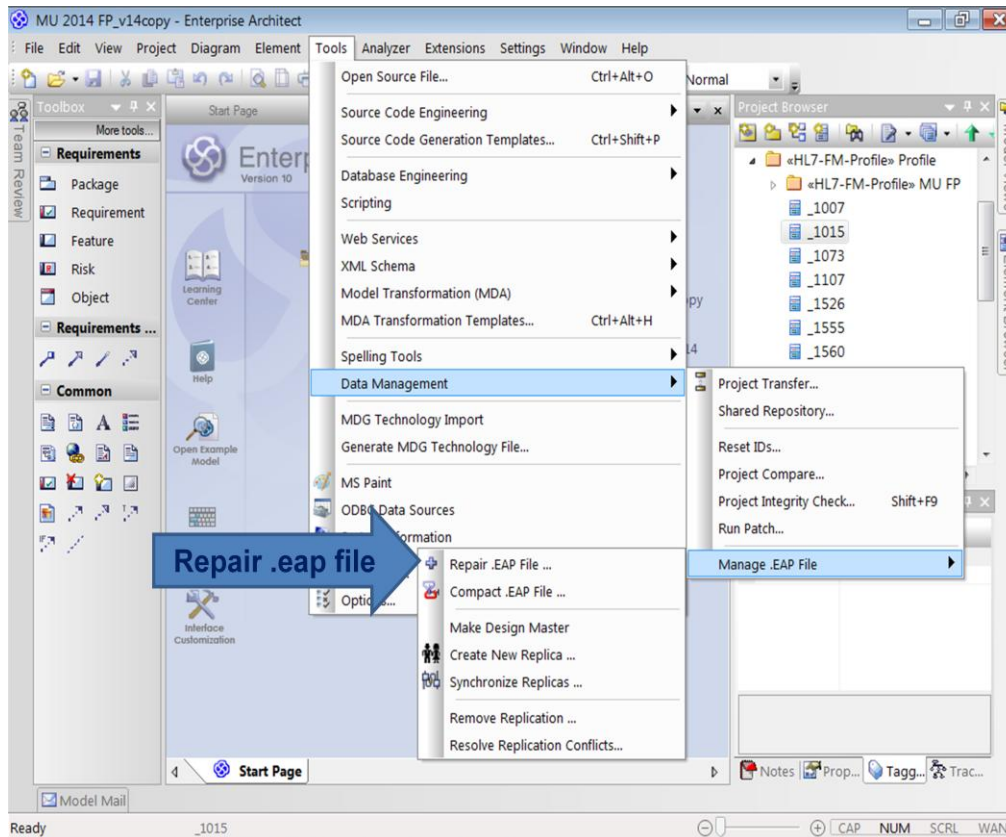


Figure 6. Repair the .eap file (in version 12 of EA this is done by going to 'Project' in the top navigation).

The MAX file is the new Functional Profile which you can make available for others within the HL7 community. So it is part of the package of the new Functional Profile.

The MAX file is also used to create other publication formats. How to create for an example a pdf publication format, see the user guide 9CreatePublication.pdf in chapter 'Creation'.