

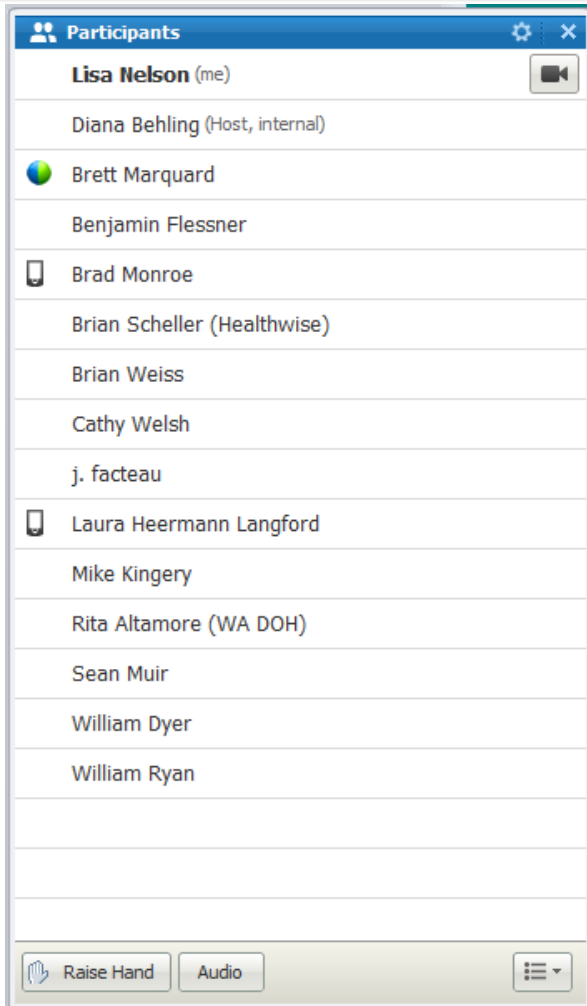
Consolidated CDA (C-CDA): Support Task Force

3/07/2013

C-CDA Task Force Agenda

- Welcome
- Walk through of task force report outline
- Approve proposal on moderator and SME roles
- Update on no known allergies
- Pilot proposed support process
- Update on support tools
- Next steps

Minutes - Participants



On Phone, not on webex:
Michael Kingery

Minutes - Motions

- Motion to approve documentation of support process roles for Moderation and SME (Diana Behling, 2nd: Laura Heerman)
 - Abstain (0), Against (0), For (17): Motion carries.
- Motion to approve Maiden Name answer (Brian Weiss, 2nd: Lisa Nelson)
 - Abstain (0), Against (0), For (17): Motion carries.
- Motion to approve Custodian vs. Author answer (Brian Weiss, 2nd: Diana Behling)
 - Abstain (0), Against (0), For (17): Motion carries.

Minutes - Pilot experience

	Question	Observations	SDWG review needed?
1	No known allergies	<ul style="list-style-type: none">- Generating answers is much more challenging than expected- Errata was generated- Developing guidance on how to represent no known allergies was possible	- NO
2	Maiden Name	<ul style="list-style-type: none">- Errata was generated- Guidance on how to represent maiden name could not be provided	- NO
3	Custodian vs. Author	<ul style="list-style-type: none">- Guidance was developed	- NO

Minutes - Findings about Process from Pilot experience

- Process needs to reflect the need for an “internal SME” review prior to deciding if the answer needs to be reviewed by SDWG.
- We may need a more robust set of Answer categorizations to make it easier to handle the follow-up when a subsequent errata gets addressed and Answer needs to be updated.
- Good Answer documentation needs to include the background considerations to avoid having to rethink the same issues over and over.

Review of support roles

	Moderator	SME
Problem analysis capabilities	Capable of forming a single question to summarize the issue	Capable to perform in depth analysis
Availability	High level*	As available
Experience with the selected tool	Expert	Moderate
Ability to propose answers	Could provide answers from FAQ sheets, or knowledge of prior answers from KB	Yes. SME will have significant CDA R2 experience Vocabulary experience
Success criteria	Quick response, and categorization of questions	Able to coordinate with SDWG, and bring answer to completion
Role	Hired administrator	Volunteers?

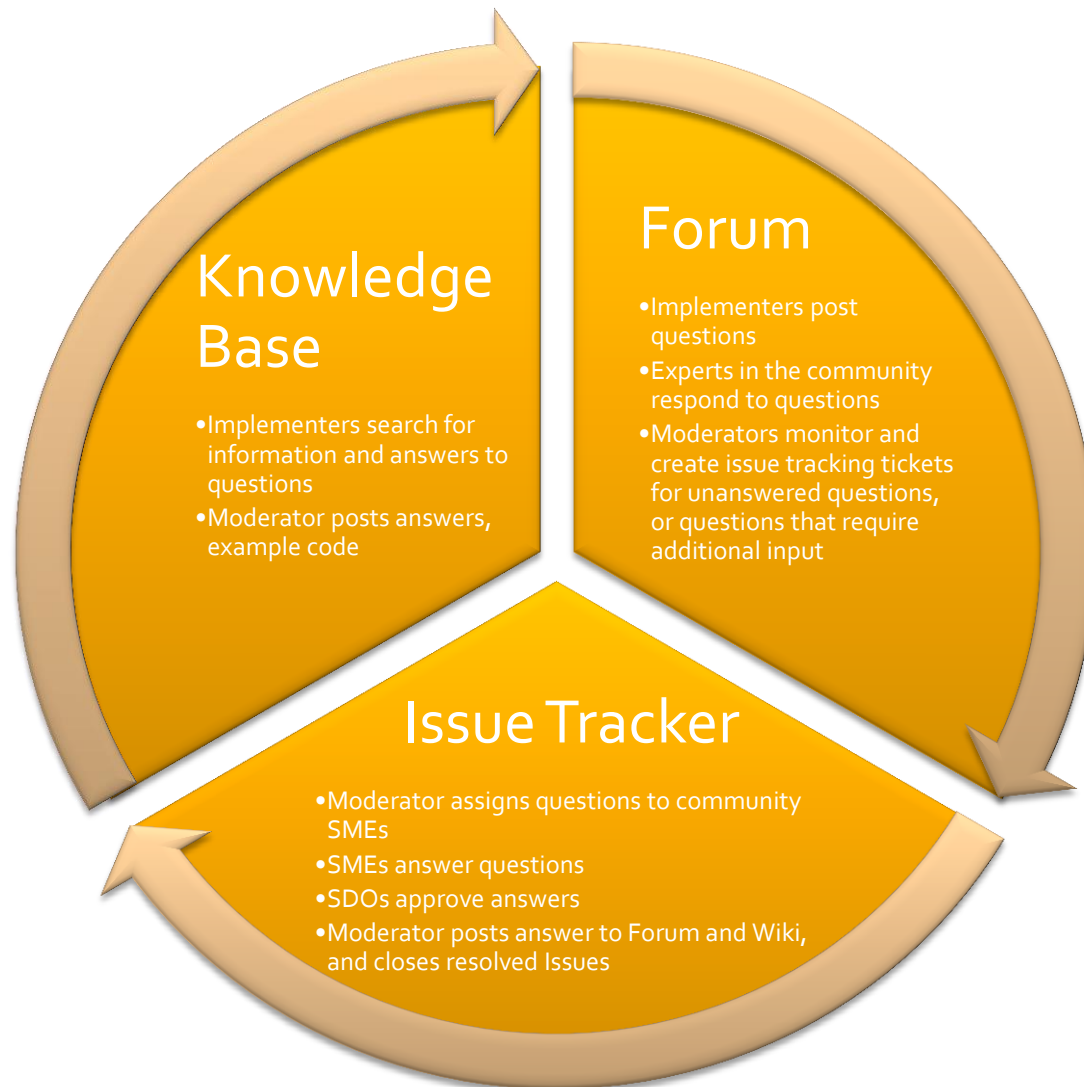
Pilot Support Process

- Posted question: How do you represent a document patient's maiden name?
 - Single well-formed: How do you represent maiden name in the US Realm Header?
- Posted question: Is there a difference between the person/organization/device which built the CCD, and the person/organization responsible for it?
 - Single well-formed:

Characteristics of a good answer

- Date of creation
- Owner info
 - Could be standards SME or SDWG if the A-ticket gets escalated to SDWG
 - check box to hide identity when posted to K-base
 - Name, telecom phone and e-mail contacts for Implementer
- A-ticket type
- Status (see A-ticket state model for possible values)
- Status comment (notes)
- Single, well-formed Primary question (should encompass all underlying questions)
- Questions addressed: used to show the set of Q-tickets linked to this A-ticket (sub questions under the Primary question)
- Short description to clarify how/why the included explanation and example(s) address the question being answered.
- Referenced sample(s), where appropriate
 - example included in stub at the document-level, or section-level,
 - validate against the CDA-schema
 - Schematron, if appropriate, in a standard stub document.
- Tagging:
 - CDA RMIM-based classification
 - Template identification: (filling in one, populates the other)
 - Template name
 - Template OID
 - C-CDA Guide heading
 - CDA R2 standard Heading
 - Other meaningful phrase(s)

Update on Tools



Contact Information

- Primary SDWG points of contact
 - Brett Marquard (brett@riverrockassociates.com)
 - Lisa Nelson (LisaRNelson@cox.net)

Q-ticket contains:

- Submitter
 - Date of submission
 - Submitter Info
 - Name, telecom phone and e-mail contacts for Implementer
 - HL7 Member number (can be blank)
 - check box to hide identity when posted to K-base
 - Short description to clarify the question
 - Referenced sample(s), if appropriate/provided
 - Single, well-formed question
 - Tagging:
 - CDA RMIM-based classification
 - Template identification: (filling in one, populates the other)
 - Template name
 - Template OID
 - C-CDA Guide heading
 - CDA R2 standard Heading
 - Other meaningful phrase(s)
- Moderator
 - Q-ticket type
 - Link to prior Question/Answer pair which did not meet the Implementer's need
 - Question Owner
 - Status (see Q-ticket state model for possible values)
 - Status Comment (notes)
 - Group with: (list of other similar Q-tickets – used to show the set of questions linked to a single A-ticket)

Q-ticket Types

Q-ticket types:	Initial possible dispositions
Request for C-CDA Clarification	Use process under pilot
C-CDA Errata Report	Escalate to SDWG
CDA R2 Extension Report	Escalate to SDWG
CDA R2 New Feature Request	Escalate to SDWG
CDA R3 New Feature Request	Escalate to SDWG
CDA Request for Specific Assistance	Escalate to SDWG
Non-standards question	Escalate to appropriate party or mark out of scope

Q-ticket status (state model)

State	Classification	Possible transitions
Pending	Status when a Q-ticket has been started, but more information is needed from submitter to complete it as well-formed.	Open ; Closed
Open	Status when Q-ticket is confirmed to be well formed and appropriate to be escalated to Tier 2	Open ; Assigned; Closed
Assigned	Question requires SDWG review. Clear policy is needed when to classify this type.	Closed
Escalated	Additional assistance is required by SDWG or another work group to answer this question	Assigned
SME Closed	Status when an Q-ticket has been closed by finding an existing Answer	Closed
Closed	Classification after the answer is complete an implementers have been notified.	

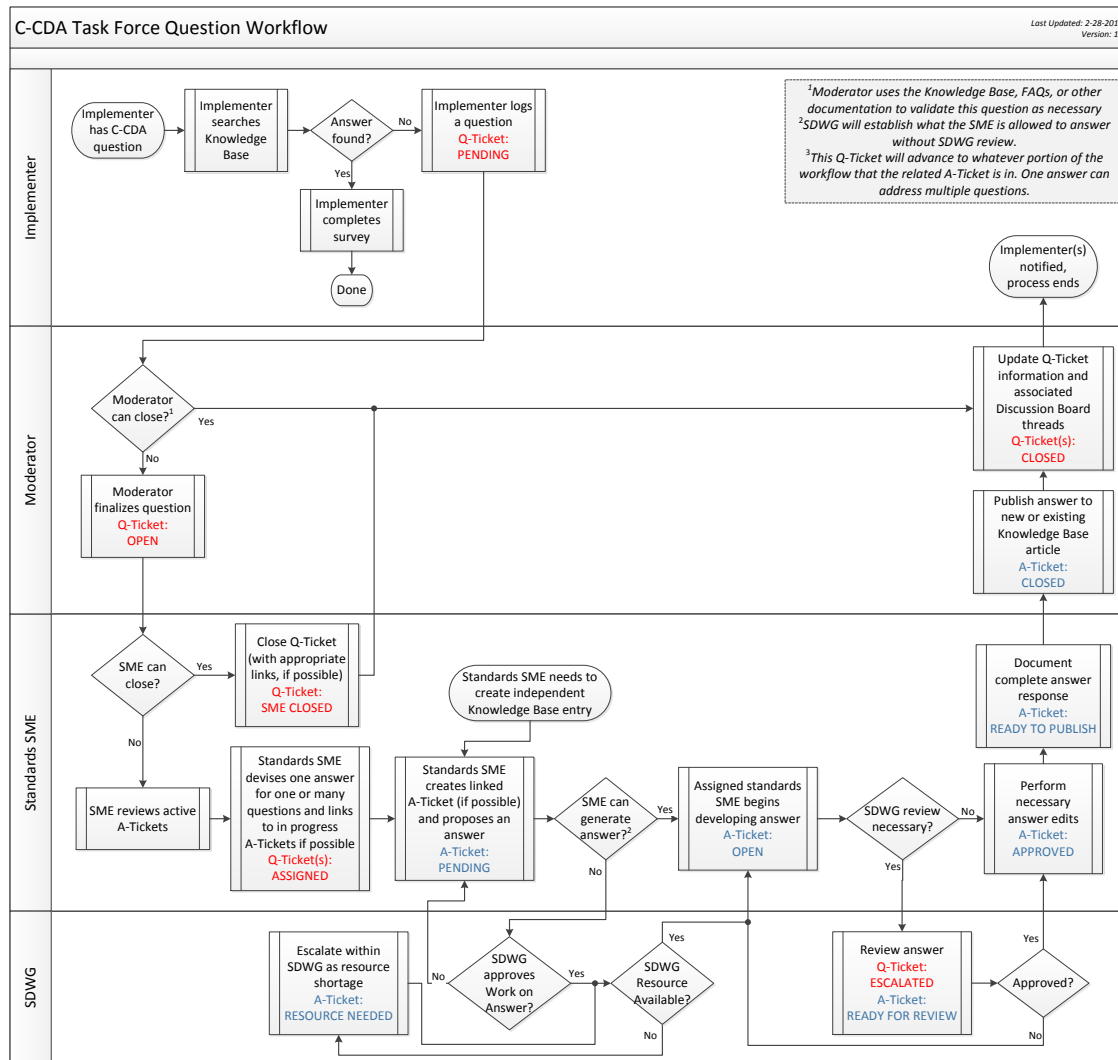
A-ticket Types

Q-ticket types:	Description
C-CDA Clarification	Contains implementation guidance and clarification for Consolidated CDA

A-ticket status (state model)

State	Classification	Possible transitions
Pending	An "Answer Project" has been proposed.	Open; Resource Needed
Resource Needed	An Answer Project requires resources to be found.	Open
Open	An Answer Project has been resourced and is in progress of being developed	Ready for Review; Approved
Ready for Review	The Answer is scheduled to be reviewed within HL7 SDWG or as required.	Approved
Approved	The Answer is approved for technical content is ready for final documentation	Ready to publish
Ready to Publish	The Answer is fully documented and ready to be published in the K-Base	Closed
Closed	The Answer is posted in the K-Base	

Support work flow



C-CDA Implementation Support Task-Force Charter (approved 2/7)

SDWG task force (1/3/2013)

Setup a task force to evaluate process for managing SDWG questions.

Scope and Mission

Recommend to SDWG a process for managing, and responding to implementer questions on C-CDA.

Deliverables for initial SDWG task force by 3/1

- Clarified problem statement, and solution requirements
- Draft high-level support process flow
 - Suggested vocabulary to classify question and answers
 - Develop template for questions, and answers
 - Develop roles and responsibilities
- Recommended tooling requirements and approach
 - Identify existing tools to support the proposed process
 - Initial hosting of tool, may be different than long term home.
- Readiness for pilot with approval from SDWG

Problem statement

ONC named the HL7 SDWG published C-CDA in MU Stage 2. A support mechanism is required to support the increased demand, due to limited examples, and ambiguous conformance statements. The industry does not currently have a mechanism to respond to implementer inquires.

Solution Requirements

- Rapid start-up, and results, validated by implementer feedback
- Tools to support communication process, and governance process
- Common terminology to parse issues and determine which process they go through
- Mechanism to collaborate with other HL7 working groups when C-CDA content overlaps
- Includes a searchable “examples library” for C-CDA
- Prioritized support for MU stage 2 data elements
- Ensures both immediate/tactical/interim resolution, and monitoring and follow-through of longer-term validation of interim solution and/or alternative via standards evolution process