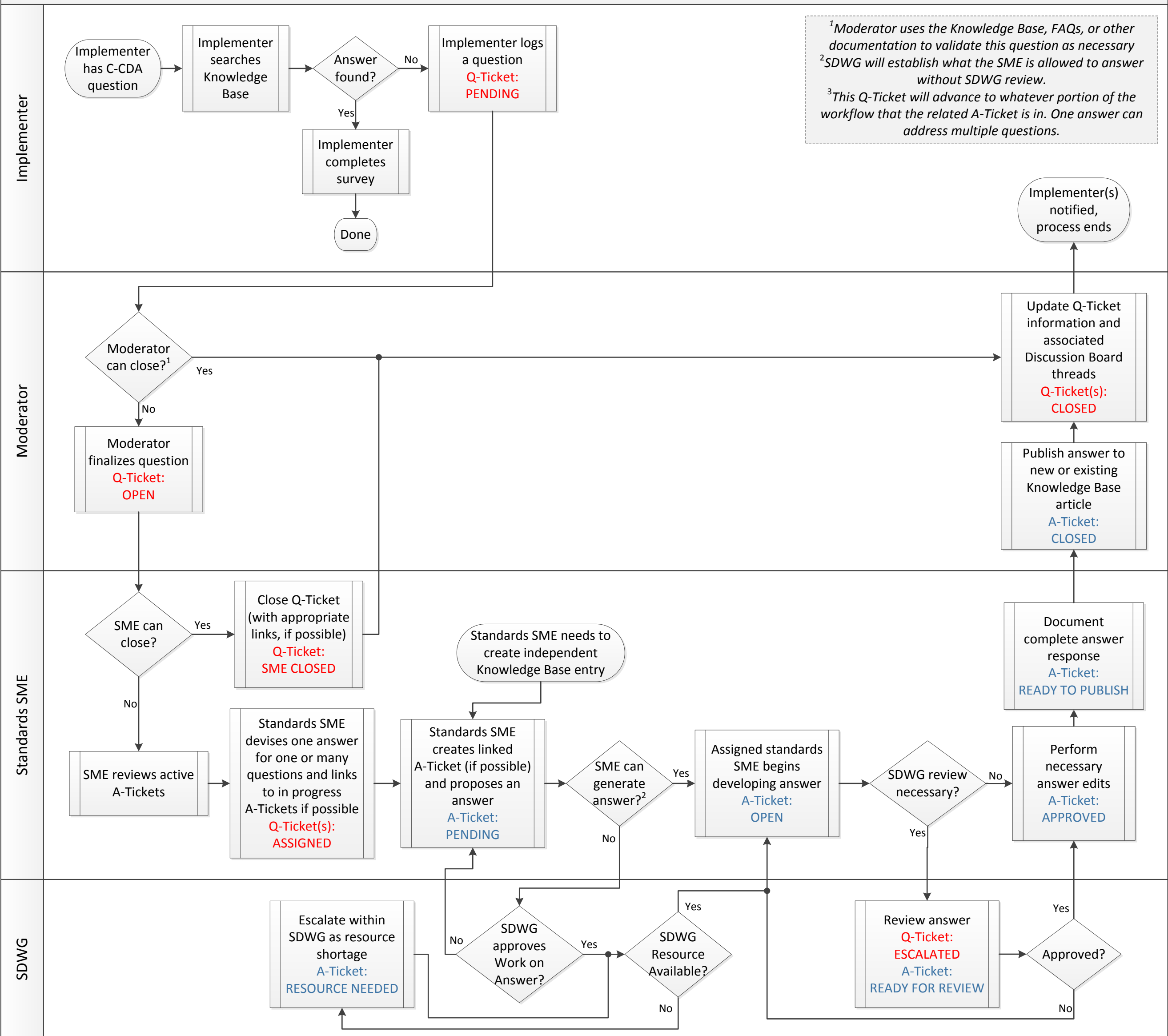


# C-CDA Task Force Question Workflow

Last Updated: 2-28-2013  
Version: 13



<sup>1</sup>Moderator uses the Knowledge Base, FAQs, or other documentation to validate this question as necessary  
<sup>2</sup>SDWG will establish what the SME is allowed to answer without SDWG review.  
<sup>3</sup>This Q-Ticket will advance to whatever portion of the workflow that the related A-Ticket is in. One answer can address multiple questions.